

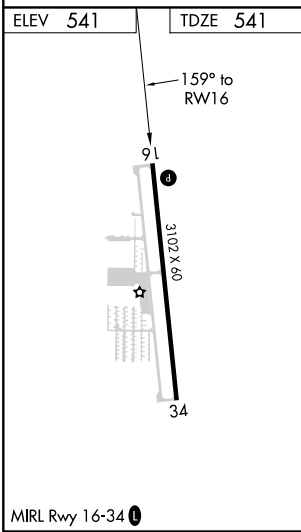
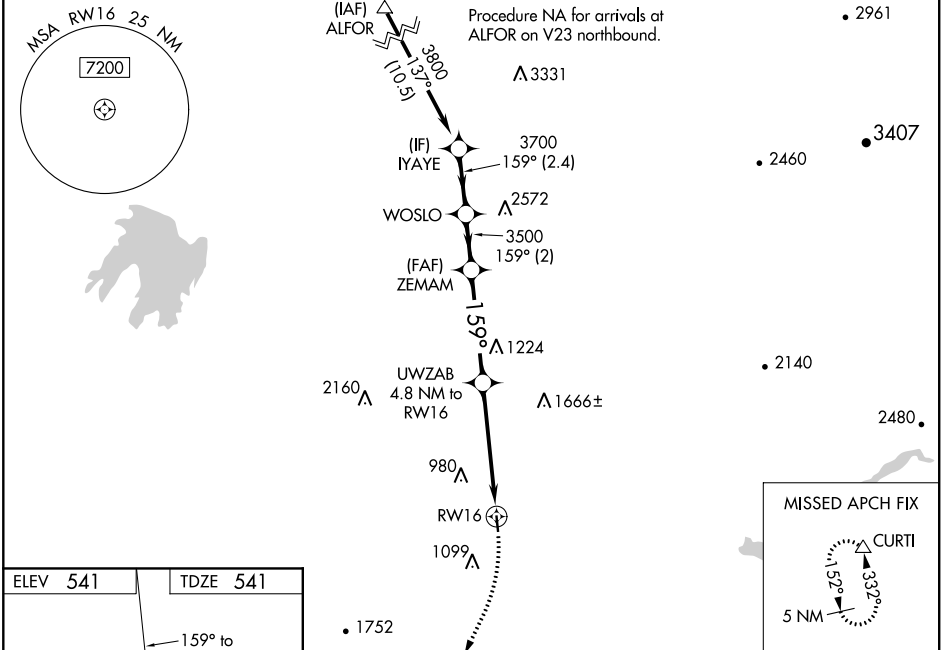
WAAS CH <b>78341</b> <b>W16A</b>	APP CRS <b>159°</b>	Rwy Idg <b>3102</b> TDZE <b>541</b> Apt Elev <b>541</b>
--	------------------------	---

# RNAV (GPS) RWY 16

HOBBY FLD (77S)

RNP APCH.	<p><b>⚠</b> For uncompensated Baro-VNAV systems, LNAV/VNAV NA below -16°C or above 54°C. Circling Rwy 34 NA at night. When local altimeter setting not received, use Eugene altimeter setting and increase LPV DA to 1102 feet and all LPV visibilities ¼ SM, and increase LNAV/VNAV DA to 1474; increase all MDAs 80 feet. Baro-VNAV and VDP NA when using Eugene altimeter setting. Rwy 16 helicopter visibility reduction below ¼ SM NA.</p>	MISSED APPROACH: Climbing right turn to 6000 direct CURTI and hold, continue climb-in-hold to 6000.
-----------	---	---

AWOS-3 <b>119.275</b>	CASCADE APP CON * <b>119.6</b>	UNICOM <b>122.7 (CTAF) 0</b>
--------------------------	-----------------------------------	---------------------------------



VGSI and RNAV glidepath not coincident.

IYAYE	WOSLO	ZEMAM	UWZAB	RWY 16
3800	3700	3500	4.8 NM to RWY 16	
GP 3.10°	3500	*2160	*4 NM to RWY 16	
TCH 40				
	2.4 NM	2 NM	4.1 NM	0.8 NM
4 NM				
6000	CURTI			
* LNAV only.				

CATEGORY	A	B	C	D
LPV DA	1041-1 3/8 500 (500-1 3/8)			
LNAV/VNAV DA	1413-2 1/2 872 (900-2 1/2)			
LNAV MDA	1820-1 1/4 1279 (1300-1 1/4)	1820-1 1/2 1279 (1300-1 1/2)	1820-3 1279 (1300-3)	1279 (1300-3)
<b>C</b> CIRCLING	1820-1 1/4 1279 (1300-1 1/4)	1820-1 1/2 1279 (1300-1 1/2)	2260-3 1719 (1800-3)	2740-3 2199 (2200-3)

NW-1, 11 AUG 2022 to 08 SEP 2022

NW-1, 11 AUG 2022 to 08 SEP 2022