

| | | | |
|--|------------------------|---|-------------|
| WAAS CH 62837 W11A | APP CRS 111° | Rwy ldg TDZE 721 Apt Elev 721 | 3850 |
|--|------------------------|---|-------------|

RNAV (GPS) RWY 11

CYNTHIANA-HARRISON COUNTY (Ø18)

RNP APCH.

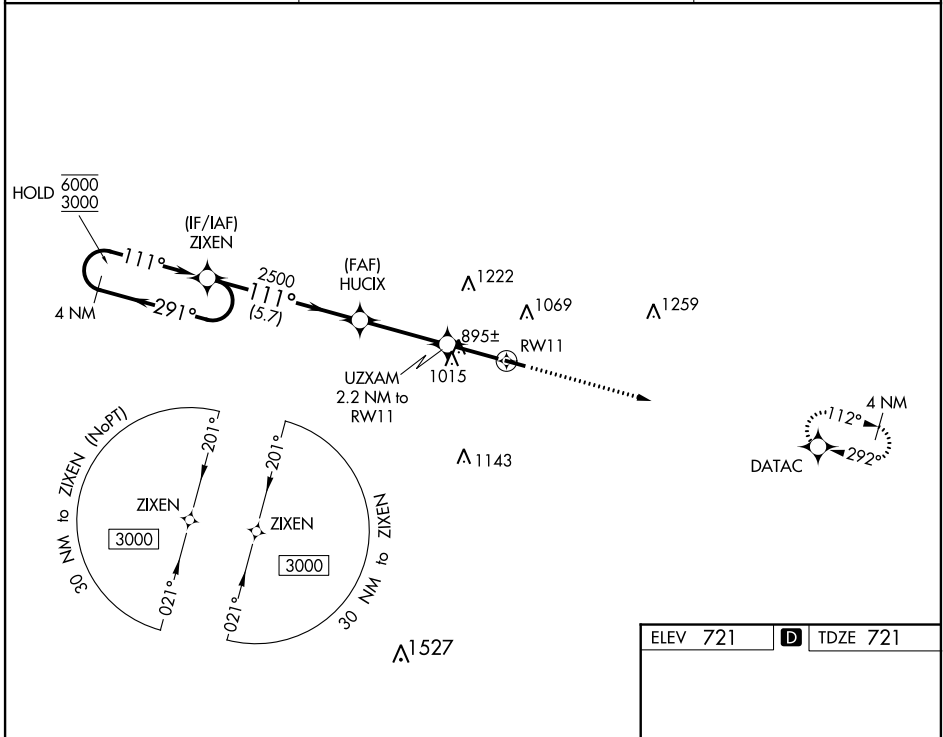
▼ Procedure NA at night. Rwy 11 helicopter visibility reduction below 1 SM NA.
▲ NA Use Georgetown altimeter setting; when not received, use Lexington altimeter setting and increase all MDA 40 feet.

MISSED APPROACH:
Climb to 3000 direct
DATAC and hold.

27K AWOS-3
119.975

LEXINGTON APP CON
120.15 259.3 (040°-220°)
120.75 298.9 (221°-039°)

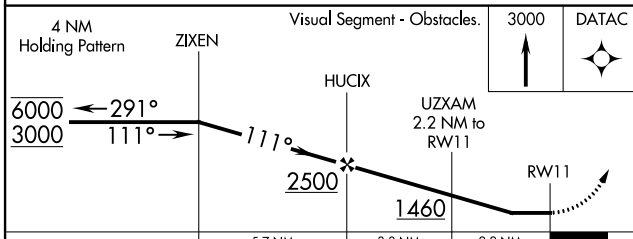
UNICOM
122.8 (CTAF) **Ø**



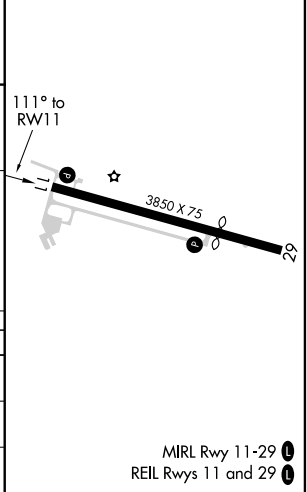
SE-1, 11 AUG 2022 to 08 SEP 2022

SE-1, 11 AUG 2022 to 08 SEP 2022

| | |
|----------|-------------------|
| ELEV 721 | D TDZE 721 |
|----------|-------------------|



| CATEGORY | A | B | C | D |
|-------------------|-----------------------|-------------------------|---|----|
| LP MDA | 1220-1 | 499 (500-1) | | NA |
| LNAV MDA | 1300-1 | 579 (600-1) | | NA |
| C CIRCLING | 1340-1 619 (700-1) | 1560-1¼ 839 (900-1¼) | | NA |



MIRL Rwy 11-29 **Ø**
REIL Rws 11 and 29 **Ø**