

WAAS CH <b>42537</b> <b>W29A</b>	APP CRS <b>292°</b>	Rwy ldg TDZE <b>721</b> Apt Elev <b>721</b>	<b>2756</b>
--	------------------------	---	-------------

# RNAV (GPS) RWY 29

CYNTHIANA-HARRISON COUNTY (Ø18)

RNP APCH.

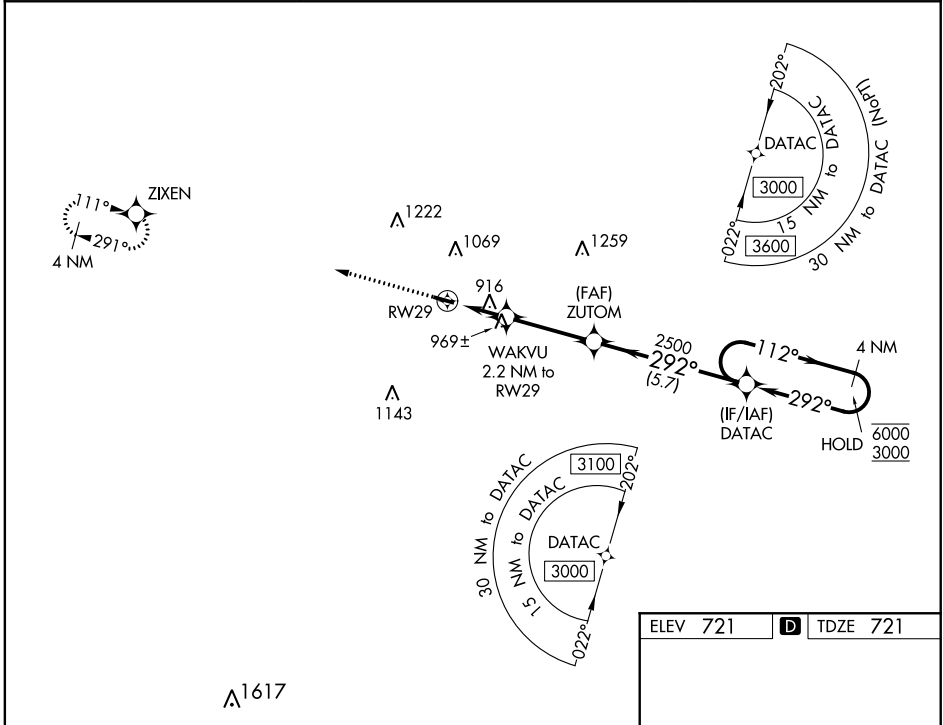
- ▼ Procedure NA at night. Rwy 29 helicopter visibility reduction below 1 SM NA. Use Georgetown altimeter setting; when not received, use Lexington altimeter setting and increase all MDA 40 feet.
- ▲ NA

MISSED APPROACH: Climb to 3000 direct ZIXEN and hold.

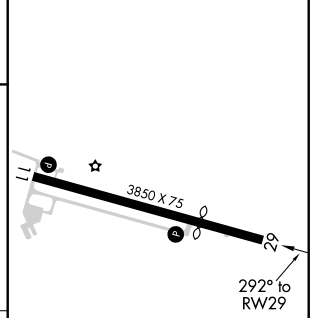
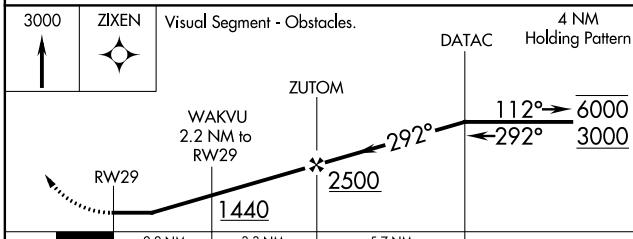
27K AWOS-3  
**119.975**

LEXINGTON APP CON  
**120.15 259.3** (040°-220°)  
**120.75 298.9** (221°-039°)

UNICOM  
**122.8** (CTAF) **Ø**



ELEV 721	<b>D</b>	TDZE 721
----------	----------	----------



CATEGORY	A	B	C	D
LP MDA	1240-1	519 (600-1)		NA
LNAV MDA	1280-1	559 (600-1)		NA
<b>C</b> CIRCLING	1340-1 619 (700-1)	1560-1¼ 839 (900-1¼)		NA

MIRL Rwy 11-29 **Ø**  
REIL Rwys 11 and 29 **Ø**

SE-1, 11 AUG 2022 to 08 SEP 2022

SE-1, 11 AUG 2022 to 08 SEP 2022