

ROUND LAKE (W57) 2 E UTC-5(-4DT) N42°55.87' W73°46.25'

NEW YORK

178 NOTAM FILE BTV

RWY 14-32: 1927X76 (TURF) 1.0% up SE

RWY 14: Tree.

RWY 32: Trees.

AIRPORT REMARKS: Attended on call. Deer on and in/ovf arpt. Arpt clsd to itinerant acct Nov-May. Rwy 14-32 has 80' trees rgt and left of centerline in primary sfc. Rwy 14-32 soft during spring (Mar-Jun). Military helicopters and ultralight acct use rwy. Access to arpt from lake overgrown. Ctc arpt mgr prior to seaplane arrival.

AIRPORT MANAGER: 518-899-6316

COMMUNICATIONS: CTAF/UNICOM 122.8

CLEARANCE DELIVERY PHONE: For CD ctc Albany Apch at 518-862-2299.

• • • • •

WATERWAY 14W-32W: 4000X600 (WATER)

ROUSES POINT SPB (K21) 0 E UTC-5(-4DT) N44°59.50' W73°21.81'

MONTREAL

95 AOE NOTAM FILE BTV

WATERWAY ALL-WAY: 7900X500 (WATER)

SERVICE: FUEL MOGAS

SEAPLANE REMARKS: Unattended. Marine 91 octane avbl only. Extensive watercraft activity on and in vicinity of arpt. Marine activity in vicinity sailboat mast +40 ft - stored boat masts to 90 ft. Landing possible all directions. Call US CUSTOMS prior to arrival at 518-298-8346 or 518-298-7904. Coordinate actual point of ldg at 1-800-827-2851. 1 hour advance notice required.

AIRPORT MANAGER: 518-297-7000

COMMUNICATIONS: CTAF 122.9

CLEARANCE DELIVERY PHONE: For CD ctc Burlington Apch at 802-657-4401.

ROYALTON (See GASPORT on page 204)

SANDS POINT SPB (See PORT WASHINGTON on page 237)

SARANAC LAKE

ADIRONDACK RGNL (SLK)(KSLK) 4 NW UTC-5(-4DT) N44°23.12' W74°12.37'

MONTREAL

1663 B ARFF Index—See Remarks NOTAM FILE SLK

H-11C, 12K, L-32G

RWY 05-23: H6573X150 (ASPH-GRVD) S-40, D-73, 2S-92, 2D-115

IAP, AD

PCN 64 F/B/W/T HIRL 0.3% up NE

RWY 05: PAPI(P4L)—GA 3.0° TCH 35'. Trees.

RWY 23: MALSR. Trees.

RWY 09-27: H3997X100 (ASPH) S-40, D-73, 2S-92, 2D-115

PCN 61 F/B/W/T MIRL

RWY 09: Trees.

RWY 27: Thld dsplcd 400'. Trees.

RUNWAY DECLARED DISTANCE INFORMATION

RWY 05: TORA-6573 TODA-6573 ASDA-6573 LDA-6573

RWY 09: TORA-3997 TODA-3997 ASDA-3997 LDA-3997

RWY 23: TORA-6573 TODA-6573 ASDA-6333 LDA-6333

RWY 27: TORA-3997 TODA-3997 ASDA-3997 LDA-3597

SERVICE: S4 FUEL 100LL, JET A LGT ACTIVATE HIRL Rwy 05-23, MIRL Rwy 09-27, MALSR Rwy 23, PAPI Rwy 05 and twy lghts—CTAF.

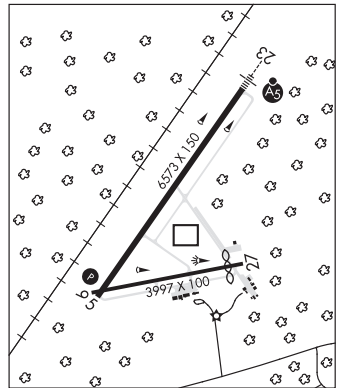
AIRPORT REMARKS: Attended May-Oct 1100-0200Z±. Nov-Apr 1100-0100Z±. For arpt attendt after hrs call 518-637-7329. Class IV, ARFF Index A. PPR 48 hr for unscheduled acct ops with more than 30 passenger seats call arpt manager 518-891-4600 ext 106. Index B coverage is avbl. Twy B unavbl to acct with wingspan 79' and abv. Abv ground twy edge lghts adjacent to Twy B tie down apron area. Rwy 09 NSTD markings, thld markings 400' from rwy end. Cold temperature airport. Altitude correction required at or below -28C. Ldg fee.

AIRPORT MANAGER: 518-891-4600

WEATHER DATA SOURCES: ASOS 124.175 (518) 891-6696.

COMMUNICATIONS: CTAF/UNICOM 123.0

® BOSTON CENTER APP/DEP CON 120.35



CONTINUED ON NEXT PAGE

CONTINUED FROM PRECEDING PAGE

CLEARANCE DELIVERY PHONE: For CD if una ctc on freq, ctc Boston ARTCC at 603-879-6859.

RADIO AIDS TO NAVIGATION: NOTAM FILE SLK.

SARANAC LAKE (L) DME 109.2 SLK Chan 29 N44°23.07' W74°12.27' at fld. 1647.

DME unusable:

089°-104° byd 25 NM blo 10,000'

105°-110° byd 25 NM

111°-165° byd 25 NM blo 10,000'

300°-350° byd 36 NM blo 10,000'

ILS 108.9 I-SLK Rwy 23. Class IA. Unmonitored.

SARATOGA CO (See SARATOGA SPRINGS on page 242)

SARATOGA SPRINGS

SARATOGA CO (5B2) 3 SW UTC-5(-4DT) N43°03.04' W73°51.70'

434 B TPA-1201(767) LRA NOTAM FILE 5B2

RWY 05-23: H4699X100 (ASPH-CONC-GRVD) S-116, D-192

PCN 46 F/A/X/T MIRL

RWY 05: REIL. Trees.

RWY 23: REIL. PAPI(P2L)-GA 3.0° TCH 43'. Trees.

RWY 14-32: H4000X100 (ASPH-CONC) S-83, D-126

PCN 30 F/A/X/T MIRL

RWY 14: Trees.

RWY 32: Trees.

SERVICE: S4 FUEL 100LL, JET A OX4 LGT ACTVT REIL Rwy 05-23;

MIRL Rwy 05-23-CTAF. Rwy 14-32 rwy lgts OTS.

AIRPORT REMARKS: Attended 1230Z†-dusk. Albany ANG helicopters do touch and go ldg ops usually during dalgt hrs. Glider activity on weekends and occasionally weekdays with extensive pre-launch and after ldg ground ops on shoulders of rwy in use. Year round federally and state protected habitat for Karner Blue Butterfly, unauthorized off-pavement ops prohibited. VASI clearance plane obstruction exists on Rwy 32 due to tree height.

AIRPORT MANAGER: 518-885-5470

WEATHER DATA SOURCES: AWOS-3 132.025 (518) 884-9289.

COMMUNICATIONS: CTAF/UNICOM 123.075

® **ALBANY APP/DEP CON** 118.05

GCO 118.125 (ALBANY CLNC DEL)

CLEARANCE DELIVERY PHONE: For CD if GCO una ctc Albany Apmh at 518-862-2299.

RADIO AIDS TO NAVIGATION: NOTAM FILE BTV.

CAMBRIDGE (L) (L) VORW/DME 115.0 CAM Chan 97 N42°59.66' W73°20.64' 293° 23.0 NM to fld. 1490/14W.

DME portion unusable:

040°-130° blo 9,000'

NEW YORK

L-32G

IAP

