

LEWISBURG

GREENBRIER VALLEY (LWB)(KLWB) 3 N UTC-5(-4DT) N37°51.50' W80°23.97'

CINCINNATI

2302 B ARFF Index—See Remarks NOTAM FILE LWB

H-10R, 12H, L-26I

RWY 04-22: H7003X150 (ASPH-GRVD) S-90, D-120, 2S-152,

IAP, AD

2D-160 PCN 52 F/D/X/U HIRL

RWY 04: MALSR.

RWY 22: REIL. VASI(V4L)—GA 3.0° TCH 58'.

RUNWAY DECLARED DISTANCE INFORMATION

RWY 04: TORA-7003 TODA-7003 ASDA-7003 LDA-7003

RWY 22: TORA-7003 TODA-7003 ASDA-7003 LDA-7003

SERVICE: S2 **FUEL** 100LL, JET A **LGT** ACTVT MALSR Rwy 04; REIL

Rwy 22; HIRL Rwy 04-22; twy lghts—CTAF. VASI Rwy 22 opr consly.

AIRPORT REMARKS: Attended continuously. Birds and deer on and invof arpt.

Class I, ARFF Index B. PPR 24 hrs for unscheduled air carrier ops with

more than 30 passenger seats call arpt manager 304-645-3961.

ARFF Index C equipment avbl upon request. Ldg fee. Multi engine only,

fee waived if purchase fuel.

AIRPORT MANAGER: 304-645-3961

WEATHER DATA SOURCES: AWOS-3 121.4 (304) 645-4533.

COMMUNICATIONS: CTAF 118.9 UNICOM 122.95 ATIS 121.4 (1400-0000Z)†

WASHINGTON CENTER APP/DEP CON 134.4

LEWISBURG TOWER 118.9 (1400-0000Z)† GND CON 121.9

CLNC DEL 120.85 (when twr clsd)

AIRSPACE: CLASS D svc 1400-0000Z†; other times CLASS G.

RADIO AIDS TO NAVIGATION: NOTAM FILE LWB.

(H) DME 116.05 LWB Chan 107(Y) N37°51.83' W80°23.51' at fld. 2338.

DME unusable:

095°-150°

151°-185° byd 20 NM blo 10,000'

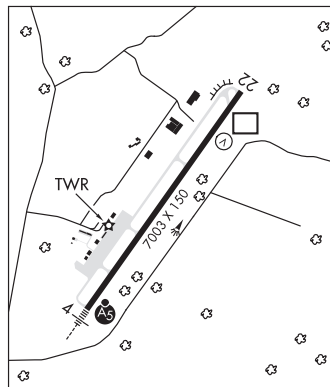
186°-196° byd 20 NM blo 7,000'

197°-094° byd 20 NM blo 10,000'

BUSHI NDB (LOM) 346 LW N37°46.94' W80°28.11' 044° 5.6 NM to fld.

ILS 110.35 I-LWB Rwy 04. LOM BUSHI NDB. Localizer offset angle 002° 04 min 34 sec. ILS unusable for coupled apchs blw 2,700' MSL. LOC unusable 0.3 NM inbd.

COMM/NAV/WEATHER REMARKS: Use CTAF 118.9 when twr clsd. Freq 121.5 not avbl at twr.



LOGAN CO (6L4) 4 E UTC-5(-4DT) N37°51.34' W81°54.95'

CINCINNATI

1666 B NOTAM FILE EKN

L-26H

RWY 06-24: H3605X75 (ASPH) MIRL 0.3% up NE

IAP

RWY 06: REIL. PAPI(P2L)—GA 3.0° TCH 47'. Trees.

RWY 24: REIL. PAPI(P2L)—GA 3.0° TCH 42'. Trees.

SERVICE: S4 **FUEL** 100LL, JET A **LGT** ACTIVATE MIRL Rwy 06-24, REIL Rwy 06 and Rwy 24, PAPI Rws 06 and Rwy 24—CTAF.

AIRPORT REMARKS: Attended irregularly. 24 hr self-serv with credit card. Deer and wildlife on and invof arpt. Airframe repairs:

For svc call 304-752-0094 days, 304-946-4415 nights. Rwy 06, 30 ft hill 800 ft from thld left. No vehicular access to fld without prior arrangement. Rwy 24 blasting 1-2 nautical miles from end of rwy. Irregularly sched. Airport access

code—CTAF. Helipad clsd permanently. 4300 ft X 150 ft military practice rwy across Rwy 24 apch 1.2 miles NE oriented

11-29. Rwy 06 and Rwy 24 mks faded. Wind indicator ws not vertical, wind indications unreliable.

AIRPORT MANAGER: 304-752-0975

WEATHER DATA SOURCES: AWOS-3PT 119.375 (304) 752-0814.

COMMUNICATIONS: CTAF 122.9

Ⓡ CHARLESTON APP/DEP CON 119.2 (North)

INDIANAPOLIS CENTER APP/DEP CON 126.575 (South)

CLEARANCE DELIVERY PHONE: For CD ctc Charleston Apch at 304-344-5867 ext 281.

RADIO AIDS TO NAVIGATION: NOTAM FILE CRW.

CHARLESTON (H) (H) VOR/DME 117.4 HVQ Chan 121 N38°20.98' W81°46.19' 196° 30.4 NM to fld. 1099/3W.

VOR unusable:

185°-190°

240°-250°

DME unusable:

230°-240°

MARSHALL CO (See MOUNDSVILLE on page 394)