

KNOXVILLE

KNOXVILLE DOWNTOWN ISLAND (DKX)(KDKX) 3 E UTC-5(-4DT) N35°57.83' W83°52.42'

ATLANTA
L-25B
IAP

833 B NOTAM FILE BNA

RWY 08-26: H3499X75 (ASPH) S-22 MIRL

RWY 08: REIL. PAPI(P2L)—GA 3.8° TCH 43'. Tree.

RWY 26: REIL. PAPI(P2L)—GA 3.35° TCH 44'.

SERVICE: S4 **FUEL** 100LL, JET A+ **OX** 1, 2, 3, 4 **LGT** Dusk-Dawn.
MIRL Rwy 08-26; REIL Rwy 08 and Rwy 26 and TWY LGTS are preset low INTST; INCR INTST—CTAF.

NOISE: Rwy 26 dep avoid turns over neighborhood 1 NM SW of arpt. Noise sensitive area.

AIRPORT REMARKS: Attended 1200-0300Z†. Geese on and invof arpt. Fuel: 100LL self-svc avbl H24 with credit card. TFR may be in effect over stadium 2.5 miles W—call 865-577-4461 for times. Rwy 08 calm wind rwy.

AIRPORT MANAGER: (865) 342-3182

WEATHER DATA SOURCES: AWOS-3 125.375 (865) 579-6151.

COMMUNICATIONS: CTAF 126.6 **UNICOM** 122.95

Ⓡ **APP/DEP CON** 123.9

CLNC DEL 121.7

CLEARANCE DELIVERY PHONE: For CD ctc Knoxville Apch at 865-980-3034; if una for CD ctc Knoxville Apch at 865-980-3033.

AIRSPACE: CLASS E.

RADIO AIDS TO NAVIGATION: NOTAM FILE TYS.

VOLUNTEER (H) (H) VORTACW 116.4 VVX Chan 111 N35°54.29' W83°53.68' 019° 3.7 NM to fld. 1315/3W.

LOC 111.3 I-DKX Rwy 26. Front unusable byd 32° right of course.



MC GHEE TYSON (TYS)(KTYS) P (ANG ARNG) 10 S UTC-5(-4DT) N35°48.67' W83°59.64'

ATLANTA
H-9A, 12G, L-25B
IAP, AD

987 B LRA Class I, ARFF Index C NOTAM FILE TYS

RWY 05L-23R: H10000X150 (CONC-GRVD) S-120, D-239, 2D-439, 2D/2D2-961 PCN 71 R/B/W/T HIRL CL

RWY 05L: MALSR. PAPI(P4L)—GA 3.0° TCH 55'. RVR-T Thld dsplcd 490'. 0.8% up.

RWY 23R: ALSF2. TDZL. PAPI(P4L)—GA 3.0° TCH 56'. RVR-TMR Thld dsplcd 505'. Rgt tfc. 0.4% down.

RWY 05R-23L: H9000X150 (ASPH-GRVD) S-75, D-200, 2D-270 PCN 65 F/B/X/T HIRL CL

RWY 05R: TDZL. REIL. PAPI(P4L)—GA 3.0° TCH 50'. RVR-R Rgt tfc. 0.5% up.

RWY 23L: REIL. PAPI(P4L)—GA 3.0° TCH 50'. RVR-T Thld dsplcd 397'.

RUNWAY DECLARED DISTANCE INFORMATION

RWY 05R:TORA-9000 TODA-9000 ASDA-8600 LDA-8600

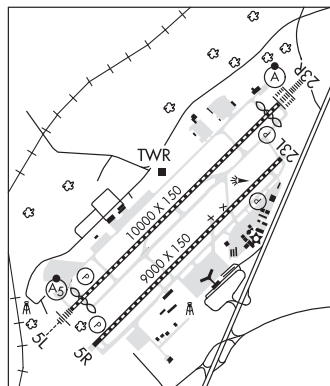
RWY 23L:TORA-9000 TODA-9000 ASDA-9000 LDA-8600

SERVICE: S4 **FUEL** 100LL, JET A, A++ **OX** 1 **MILITARY—JASU**

(A/M32A-86) (A/M32A-95) **FUEL** A+++(Mil), A, A+ (C865-970-3049.) (NC-100LL) Mil contr fuel vbl. **FLUID PRESAIR** LPOX OIL O-148(Mil)

AIRPORT REMARKS: Attended continuously. Birds on and invof arpt, increased Oct-Apr. Rscd not mntd 2130-1300Z† dly or wkend and hol. Rwy 05L-23R and Rwy 05R-23L wt brg capacity for 2S landing gear is 175. Rwy 23L, Rwy 23R departures maintain rwy hdg until passing residential area south of extd rwy cntrln unless otherwise instructed by ATC. Hold short line for Rwy 23L lctd slightly north of Twy A-8. Portion of Twy A near AER 05R not visible from twr. Wide-bodied acft use care when turning onto Twy A from Ramps 4, 5 and 6.

MILITARY REMARKS: CSTMS/AG/IMG Mil customs only with 72 hr PN. **ANG** PPR 24 hr PN rqr, ltd to OFFL BUS, ctc afld mgmt DSN 266-4404/4419, C865-336-4404/4419. ANG OPS call SODA CTL 303.025. COMD POST opr H24, DSN 266-4371, C865-336-4371. Afld Mgr does not issue or store COMSEC for tran crews. Tmptry stor of classified materials up to TOP SECRET at Comd Post. Entrances into ARNG ramp not suitable for fixed wing acft. PPR from ANG for civil acft to use Twys G1; G2; G3 & G south of Twy G4, contact 865-336-4371. **ARMY NG** ANG base ops 1230-2200Z† Mon-Fri. PPR DSN 266-4601/4605.



CONTINUED ON NEXT PAGE

CONTINUED FROM PRECEDING PAGE

AIRPORT MANAGER: 865-342-3088

WEATHER DATA SOURCES: ASOS (865) 981-4053 LLWAS. WSP.

COMMUNICATIONS: ATIS 128.35 UNICOM 122.95

RCO 122.2 (NASHVILLE RADIO)

Ⓡ **KNOXVILLE APP/DEP CON** 118.0 (051°-229°) 123.9 (230°-050°)

KNOXVILLE TOWER 121.2 **GND CON** 121.9 **KNOXVILLE CLNC DEL** 121.65

ANG OPS 303.025 (Call SODA Ctl) **ARNG OPS** 49.95 149.8 373.9

AIRSPACE: CLASS C svc ctc **APP CON.**

VOR TEST FACILITY (VOT) 112.0

RADIO AIDS TO NAVIGATION: NOTAM FILE TYS.

VOLUNTEER (H) (H) VORTACW 116.4 **VXV** Chan 111 N35°54.29' W83°53.68' 224° 7.4 NM to fld. 1315/3W.

ILS 110.3 I-TYS Rwy 05L. Class IE. LOC unusable byd 30° right of course.

ILS/DME 110.75 I-OKH Chan 44(Y) Rwy 23L. Class IE. LOC unusable inside 7.2 DME above 5,300 MSL to 2,000 MSL at 1.6 DME.

ILS 111.7 I-BUI Rwy 23R. Classification code iie.

ASR

LAFAYETTE MUNI (3M7) 2 W UTC-6(-5DT) N36°31.20' W86°03.48'

969 B NOTAM FILE BNA

ST LOUIS

H-6K, 9A, L-16J

IAP

RWY 01-19: H5200X75 (ASPH) S-21, D-31 PCN 11 F/C/X/T MIRL

0.5% up S

RWY 01: REIL. PAPI(P2L)—GA 3.5° TCH 37'. Thld dsplcd 200'. Tree.

RWY 19: REIL. PAPI(P2L)—GA 3.0° TCH 40'. Tree.

RUNWAY DECLARED DISTANCE INFORMATION

RWY 01: TORA-5200 TODA-5200 ASDA-5200 LDA-5000

RWY 19: TORA-5200 TODA-5200 ASDA-5000 LDA-5000

SERVICE: S2 FUEL 100LL, JET A+

AIRPORT REMARKS: Attended Mon-Fri 1430-2100Z†, Sat 1430-1800Z†.

Fuel avbl 24 hrs credit card svc.

AIRPORT MANAGER: 615-666-6542

COMMUNICATIONS: CTAF/UNICOM 122.8

Ⓡ **NASHVILLE APP/DEP CON** 118.4

CLEARANCE DELIVERY PHONE: For CD ctc Nashville Apch at 615-695-4522.

RADIO AIDS TO NAVIGATION: NOTAM FILE BWG.

BOWLING GREEN (H) DME 116.15 **BWG** Chan 108 N36°55.72'

W86°26.61' 143° 30.7 NM to fld. 568.

DME unusable:

001°-040° byd 10 NM blo 18,000'

041°-100° byd 10 NM blo 5,000'

101°-180° byd 10 NM blo 11,000'

181°-220° byd 10 NM

221°-240° byd 10 NM blo 10,000'

241°-255° byd 10 NM

256°-360° byd 10 NM blo 11,000'

