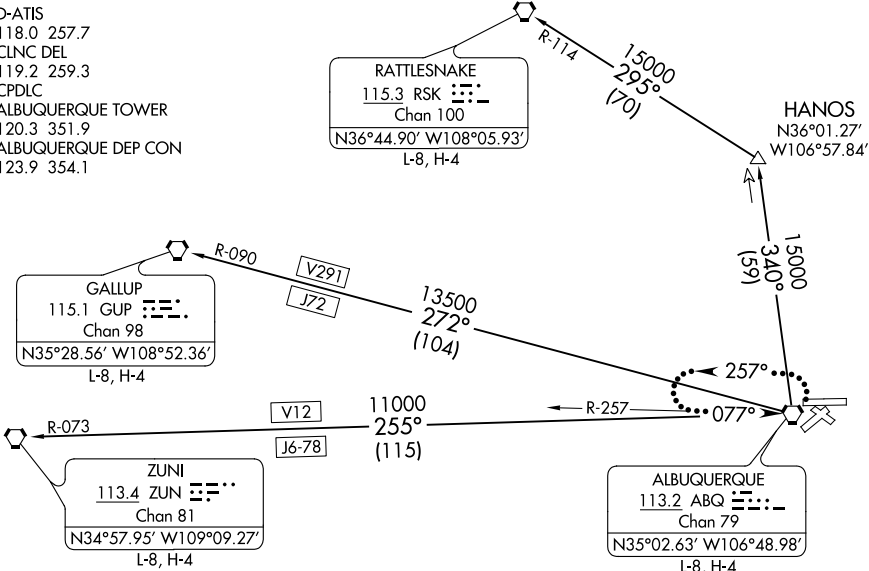


(LARGO3.ABQ) 21336  
LARGO THREE DEPARTURE

ALBUQUERQUE INTL SUNPORT (ABQ)  
ALBUQUERQUE, NEW MEXICO

D-ATIS  
118.0 257.7  
CLNC DEL  
119.2 259.3  
CPDLC  
ALBUQUERQUE TOWER  
120.3 351.9  
ALBUQUERQUE DEP CON  
123.9 354.1



TAKEOFF MINIMUMS  
Rwys 3, 12, 21, 26, 30: Standard  
Rwy 8: Standard with a minimum climb of 470' per NM to 7600.

NOTE: Departing Rwy 8, do not exceed 240K until established on assigned heading.  
NOTE: RADAR required.  
NOTE: DME required for RATTLESNAKE TRANSITION.  
NOTE: Caution: Mountainous terrain all quadrants.  
NOTE: Caution: Hang glider activity in vicinity of mountains.

NOTE: Chart not to scale.

DEPARTURE ROUTE DESCRIPTION

All aircraft climb on assigned heading for RADAR vectors to filed/assigned route.  
Expect clearance to filed altitude/flight level 5 minutes after departure.

LOST COMMUNICATIONS

If no transmissions are received for 1 minute after departure and a climb to 14000 feet or higher has not been issued, proceed direct ABQ VORTAC, climb in holding pattern to 14000, then proceed via assigned fix/route. If cleared above 14000 feet, climb on assigned heading to 14000 feet, then proceed via assigned route.

GALLUP TRANSITION (LARGO3.GUP): From over ABQ VORTAC on ABQ R-272 and GUP R-090 to GUP VORTAC.

RATTLESNAKE TRANSITION (LARGO3.RSK): From over ABQ VORTAC on ABQ R-340 to HANOS, then on RSK R-114 to RSK VORTAC.

ZUNI TRANSITION (LARGO3.ZUN): From over ABQ VORTAC on ABQ R-255 and ZUN R-073 to ZUN VORTAC.

LARGO THREE DEPARTURE  
(LARGO3.ABQ) 12OCT17

ALBUQUERQUE, NEW MEXICO  
ALBUQUERQUE INTL SUNPORT (ABQ)

SW-1, 08 SEP 2022 to 06 OCT 2022

SW-1, 08 SEP 2022 to 06 OCT 2022