

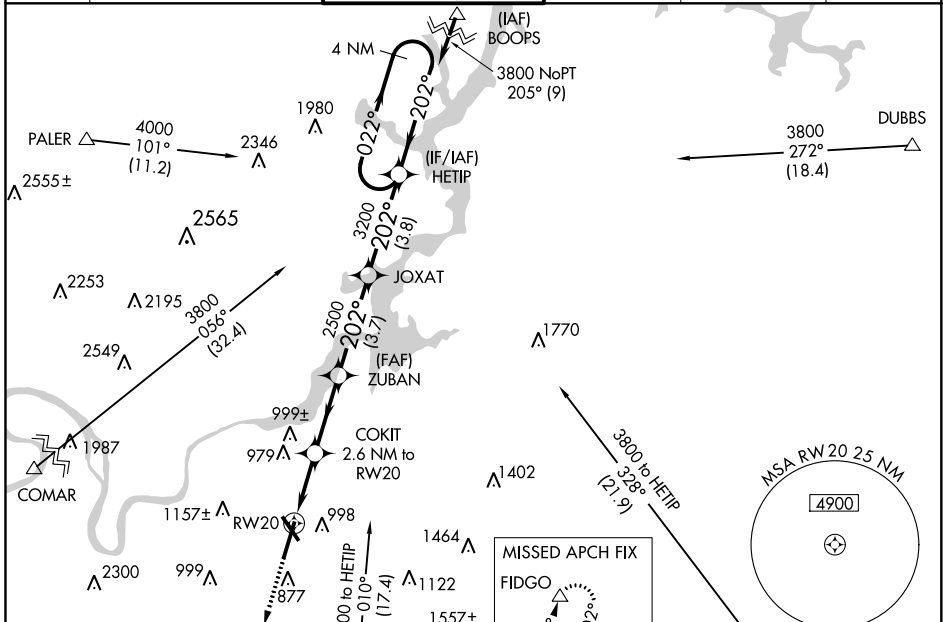
WAAS CH 70305 W20A	APP CRS 202°	Rwy Idg TDZE Apt Elev	7400 673 683
--	------------------------	-----------------------------	---

RNAV (GPS) RWY 20

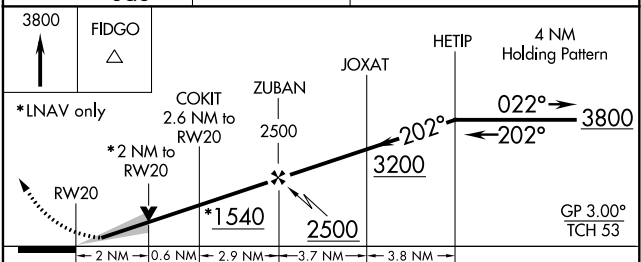
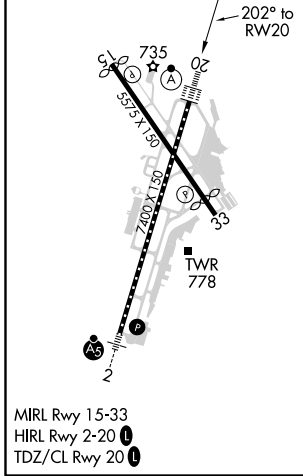
LOVELL FLD (CHA)

RNP APCH.	<p>▼ For uncompensated Baro-VNAV systems, LNAV/VNAV NA below -16°C (4°F) or above 47°C (116°F). Circling Rwy 15, 33 NA at night. Inop table does not apply to LNAV/VNAV all Cats and LNAV Cat A/B. For inop ALS, increase LNAV Cat C/D visibility to 1 1/8 SM.</p>	<p>ALSF-2</p>	<p>MISSED APPROACH: Climb to 3800 direct FIDGO and hold.</p>
-----------	--	---------------	--

ATIS 119.85	CHATTANOOGA APP CON ★ 125.1 379.1	CHATTANOOGA TOWER ★ 118.3 (CTAF) 257.8	GND CON 121.7 348.6	CLNC DEL 120.95 348.6	UNICOM 122.95
-----------------------	---	--	-------------------------------	---------------------------------	-------------------------



ELEV 683	D	TDZE 673
----------	----------	----------



CATEGORY	A	B	C	D
LPV DA	873/18		200 (200-1/2)	
LNAV/VNAV DA	1281-1 3/4		608 (600-1 1/4)	
LNAV MDA	1340-1 667 (700-1)		1340-1 1/2 667 (700-1 1/2)	
C CIRCLING	1340-1 657 (700-1)		1480-2 1/4 797 (800-2 1/4) 1580-3 897 (900-3)	

SE-1, 08 SEP 2022 to 06 OCT 2022

SE-1, 08 SEP 2022 to 06 OCT 2022