

DAYTON, OHIO

# RNAV (GPS) RWY 23R


19171

APCH CRS <b>233°</b>	Rwy Idg TDZE Arpt Elev	<b>12,600</b> <b>823</b> <b>823</b>
-------------------------	------------------------------	---

AL-108 (USAF)

WRIGHT PATTERSON AFB (KFFO)

**▼** \* When ALS inop, increase CAT AB RVR to 55, vis to 1 mile; CAT CD vis to 1 3/8 miles.  
 \*\* When Rwy 23R VGSI inop, circling to Rwy 23R NA at night.

**ALS-F-1**  
 MISSED APPROACH: Turn left climb to 3000 direct WLLBA waypoint and hold.

**ATIS**  
**124.475 269.9**

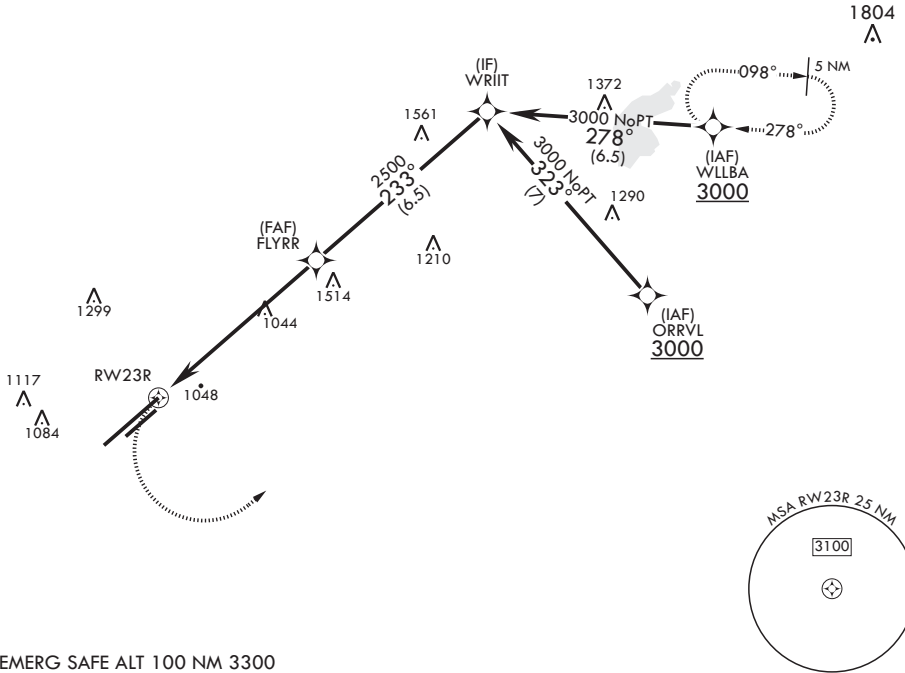
**COLUMBUS APP CON/DEP CON**  
**118.85 269.275**

**PATTERSON TOWER**  
**126.9 281.45**

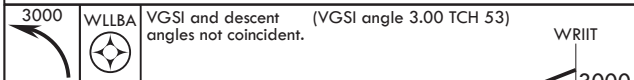
**GND CON**  
**121.8 335.8**

DME/DME RNP-0.3 NA

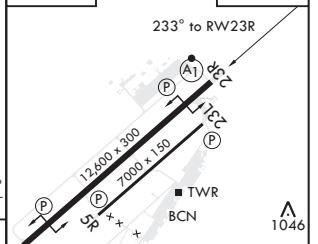
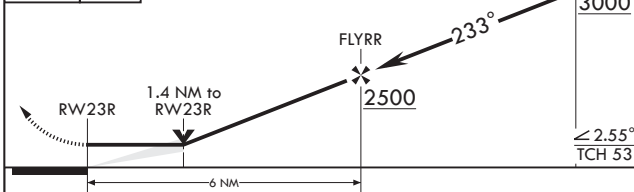
1323



EMERG SAFE ALT 100 NM 3300



**ELEV 823** | **TDZE 823**



CATEGORY	A	B	C	D
LNVA MDA*	1320/24	497 (500-1/2)	1320/50	497 (500-1)
<b>C</b> CIRCLING**	1380-1 557 (600-1)	1440-1 617 (700-1)	1560-2 737 (800-2)	1620-2 1/2 797 (800-2 1/2)

MIRL Rwy 5R-23L  
 HIRL Rwy 5L-23R

DAYTON, OHIO

39°50'N - 84°03'W

WRIGHT PATTERSON AFB (KFFO)

Amdt 5 13OCT16

# RNAV (GPS) RWY 23R

EC-2, 08 SEP 2022 to 06 OCT 2022

EC-2, 08 SEP 2022 to 06 OCT 2022