

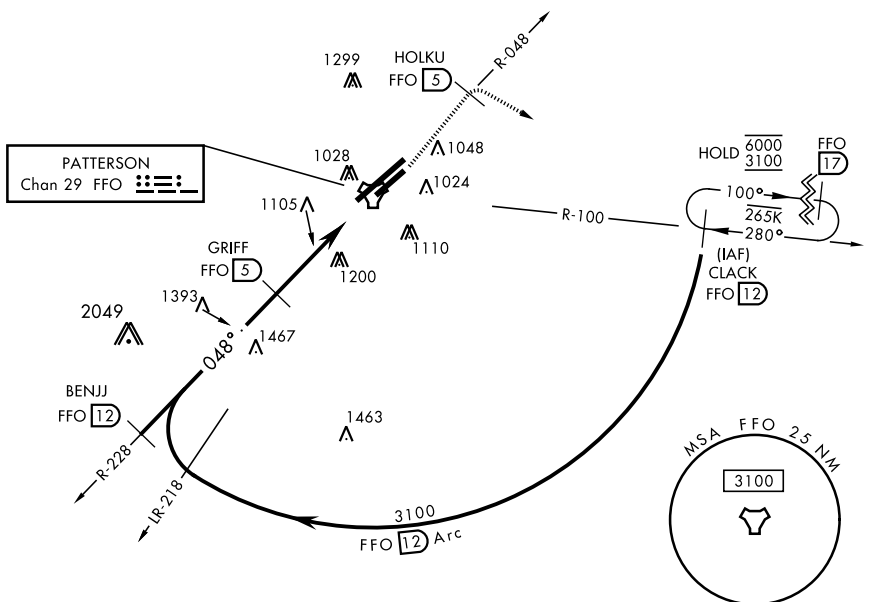
TACAN RWY 5R

TACAN FFO Chan 29	APCH CRS 048°	Rwy Idg THRE Arprt Elev 7000 807 823
--------------------------	----------------------	---

AL-108 [USAF]

WRIGHT-PATTERSON AFB (KFFO)

<p>▼ * When Rwy 23R VGSi inop, circling to Rwy 23R NA at night.</p>		<p>MISSED APPROACH: Climb to 2000 via FFO R-048 to HOLKU, turn right direct CLACK climbing to 3100 and hold.</p>	
<p>ATIS 124.475 269.9</p>	<p>COLUMBUS APP CON 118.85 269.275</p>	<p>PATTERSON TOWER 126.9 281.45</p>	<p>GND CON 121.8 335.8</p>



EC-2, 08 SEP 2022 to 06 OCT 2022

EC-2, 08 SEP 2022 to 06 OCT 2022

EMERG SAFE ALT 100 NM 3700

<p>2000 FFO R-048</p>		<p>HOLKU FFO 5</p>	<p>3100 CLACK FFO 12</p>	<p>ELEV 823</p>	<p>THRE 807</p>
CATEGORY	A	B	C	D	E
S-5R	1500-1	687 (700-1)	1500-2	687 (700-2)	
CIRCLING*	1500-1	677 (700-1)	1560-2 737 (800-2)	1620-2½ 797 (800-2½)	1620-2¾ 797 (800-2¾)

TACAN RWY 5R