


LOC I-DHN	APP CRS	Rwy Idg	8496
108.3	318°	TDZE	382
		Apt Elev	401

ILS or LOC RWY 32

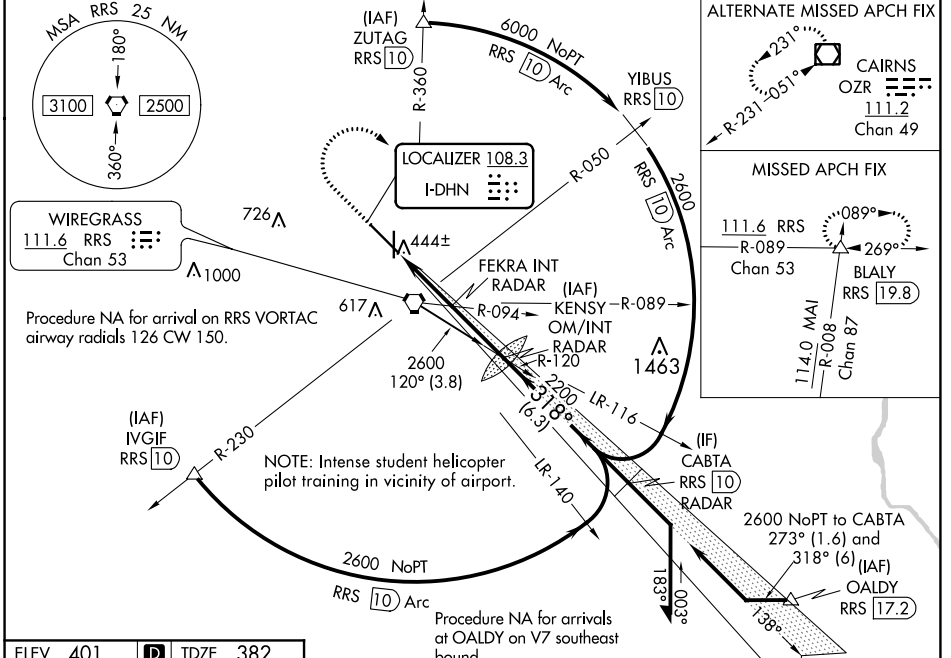
DOTHAN RGNL (DHN)

▲ For inop ALS, increase S-ILS 32 Cat E visibility to RVR 4000, S-LOC 32 Cat C/D/E visibility to 2½ SM, and S-LOC 32 FEKRA fix minimums Cat C/D/E visibility to RVR 5000.
****** RVR 1800 authorized with use of FD or AP or HUD to DA.

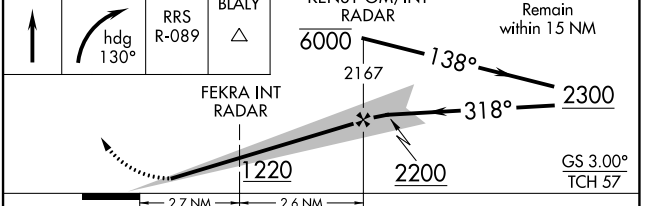
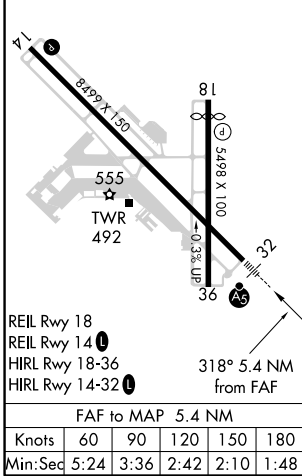
MALSR 

MISSED APPROACH: Climb to 1000 then climbing right turn to 3000 on hdg 130° and on RRS VORTAC R-089 to BLALY INT/RRS VORTAC 19.8 DME and hold.

ATIS 135.725	CAIRNS APP CON* 125.4 327.125	DOTHAN TOWER ★ 118.4 (CTAF) 0 257.6	GND CON 121.7 348.6	UNICOM 122.95
------------------------	---	--	-------------------------------	-------------------------



ELEV 401	D	TDZE 382
----------	----------	----------



CATEGORY	A	B	C	D	E
S-ILS 32 **	582/24 200 (200-½)				
S-LOC 32	1220/24 838 (900-½)	1220/40 838 (900-¾)	1220-1⅞ 838 (900-1⅞)		
C CIRCLING	1220-1¼	819 (900-1¼)	1220-2½ 819 (900-2½)	1220-2¾ 819 (900-2¾)	1220-3 819 (900-3)
FEKRA FIX MINIMUMS (DUAL VOR RECEIVERS OR RADAR REQUIRED)					
S-LOC 32	720/24 338 (400-½)		720/26 338 (400-½)		
C CIRCLING	860-1 459 (500-1)		920-1½ 519 (600-1½)	1040-2 639 (700-2)	1040-2½ 639 (700-2½)

SE-4, 08 SEP 2022 to 06 OCT 2022

SE-4, 08 SEP 2022 to 06 OCT 2022