

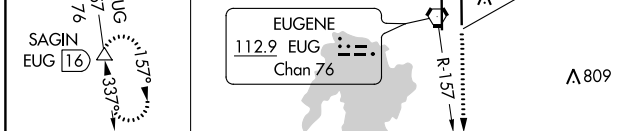
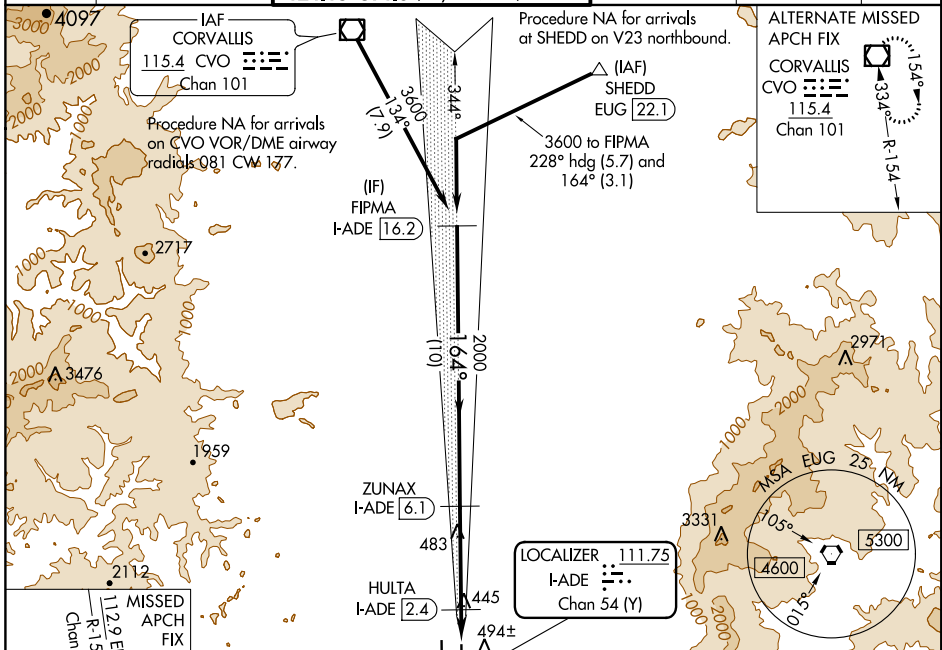
LOC/DME I-ADE 111.75 Chan 54 (Y)	APP CRS 164°	Rwy Idg TDZE Apt Elev 6000 369 374
---	------------------------	--

I LS or LOC RWY 16L

MAHLON SWEET FLD (EUG)

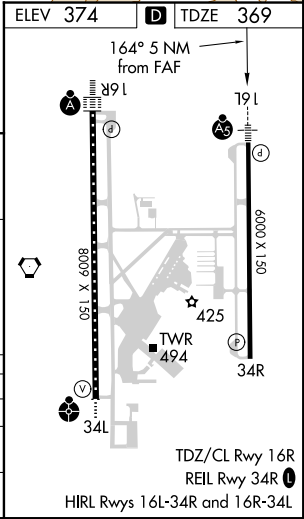
DME required.		MALS R	MISSED APPROACH: Climb to 5500 on heading 164° and EUG VORTAC R-157 to SAGIN/EUG 16 DME and hold, continue climb-in-hold to 5500.
Simultaneous approach authorized.			

ATIS 125.225	CASCADE APP CON ★ 119.6 348.7	EUGENE TOWER ★ EUG (CTAF) 0 371.9 (Rwy 16R/34L) 124.15 371.9 (Rwy 16L/34R)	GND CON 121.7 269.5	CLNC DEL 121.7 269.5	UNICOM 122.95
------------------------	---	--	-------------------------------	--------------------------------	-------------------------



FIPMA I-ADE 16.2	ZUNAX I-ADE 6.1	HULTA I-ADE 2.4	I-ADE 1.2
3600	2000	2000	*820
GS 3.00°	TCH 52	10 NM	3.7 NM
		1.3 NM	

CATEGORY	A	B	C	D
S-ILS 16L		569-½	200 (200-½)	
S-LOC 16L		700-½	331 (400-½)	
CIRCLING	820-1 446 (500-1)	840-1 466 (500-1)	1000-1¾ 626 (700-1¾)	1140-2½ 766 (800-2½)



NW-1, 08 SEP 2022 to 06 OCT 2022

NW-1, 08 SEP 2022 to 06 OCT 2022