
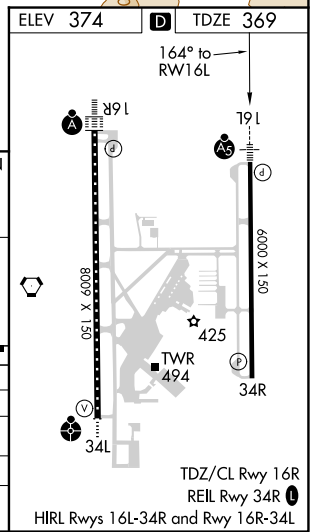
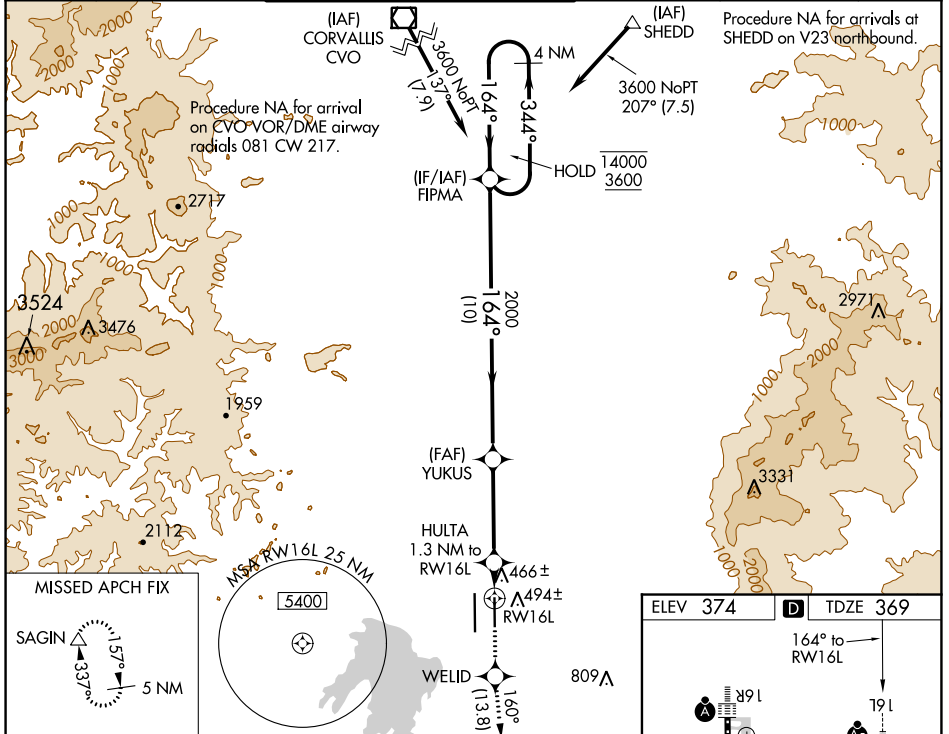


WAAS CH 81827 W16A	APP CRS 164°	Rwy Idg TDZE Apt Elev	6000 369 374
--	------------------------	-----------------------------	---

RNAV (GPS) Y RWY 16L

MAHLON SWEET FLD (EUG)

RNP APCH.		EUGENE TOWER ★ 118.9 (CTAF) 0 371.9 (Rwy 16R/34L) 124.15 371.9 (Rwy 16L/34R)		GND CON 121.7 269.5	CLNC DEL 121.7 269.5	UNICOM 122.95
⚠ Simultaneous approach authorized. LNAV procedure NA during simultaneous operations. Use of FD or AP providing RNAV track guidance required during simultaneous operations. For uncompensated Baro-VNAV systems, LNAV/VNAV NA below -10°C or above 54°C. For Inop ALS, increase LNAV/VNAV all Cats visibility to 7/5 SM, increase LNAV Cat C/D visibility to 1 SM.				MALSR  MISSED APPROACH: Climb to 5500 direct WELID and on track 160° to SAGIN and hold, continue climb-in-hold to 5500.		



4 NM Holding Pattern	FIPMA	YUKUS	5500 WELID tr 160° SAGIN
14000 ← 344°	3600 → 164°	2000	HULTA 1.3 NM to RWY 16L *LNAV only
GP 3.00° TCH 52		820	RWY 16L

CATEGORY	A	B	C	D
LPV DA		569-1/2	200 (200-1/2)	
LNAV/VNAV DA		632-1/2	263 (300-1/2)	
LNAV MDA	720-1/2	351 (400-1/2)	720-5/8	351 (400-5/8)
CIRCLING	820-1 446 (500-1)	840-1 466 (500-1)	1000-1 3/4 626 (700-1 3/4)	1140-2 1/2 766 (800-2 1/2)

NW-1, 08 SEP 2022 to 06 OCT 2022

NW-1, 08 SEP 2022 to 06 OCT 2022