

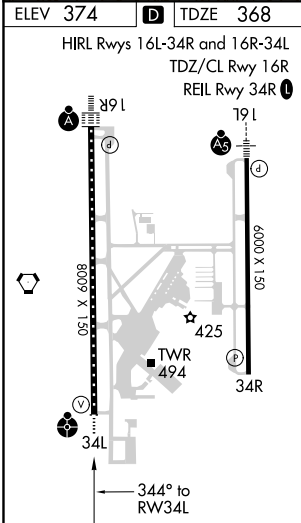
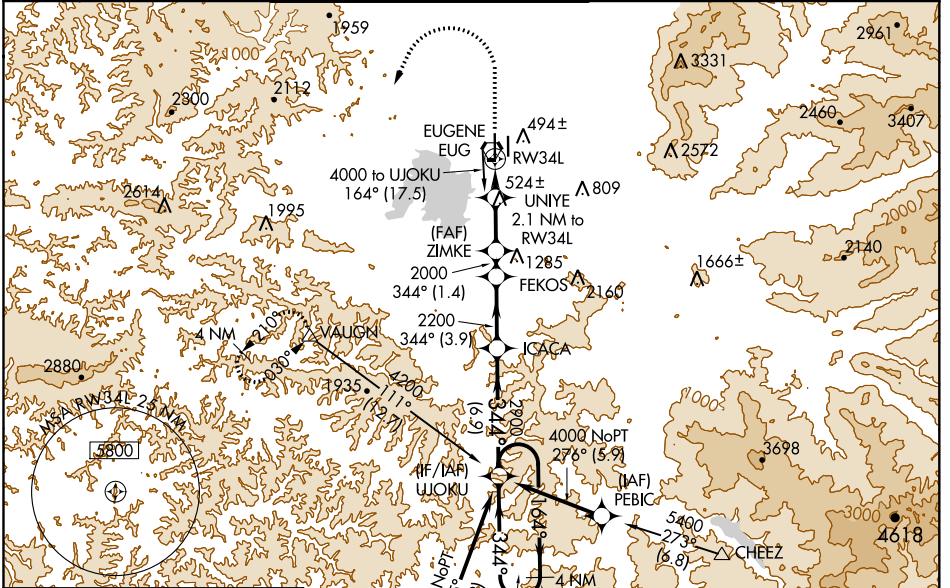
WAAS CH 45600 W34A	APP CRS 344°	Rwy Idg TDZE Apt Elev	8009 368 374
--	------------------------	-----------------------------	---

RNAV (GPS) Y RWY 34L

MAHLON SWEET FLD (EUG)

RNP APCH.		EUGENE TOWER *		GND CON	CLNC DEL	UNICOM
<p>Simultaneous approach authorized. LNAV procedure NA during simultaneous operations. Use of FD or AP providing RNAV track guidance required during simultaneous operations. For uncompensated Baro-VNAV systems, LNAV/VNAV NA below -10°C or above 54°C. For inop ALS increase LNAV/VNAV visibility Cats A-B to RVR 4500. Inop table does not apply to LPV minimums.</p>		<p>118.9 (CTAF) 0 371.9 (Rwy 16R/34L) 124.15 371.9 (Rwy 16L/34R)</p>		121.7 269.5	121.7 269.5	122.95

ATIS	CASCADE APP CON *	EUGENE TOWER *	GND CON	CLNC DEL	UNICOM
125.225	119.6 348.7	118.9 (CTAF) 0 371.9 (Rwy 16R/34L) 124.15 371.9 (Rwy 16L/34R)	121.7 269.5	121.7 269.5	122.95



ELEV 374	TDZE 368				
HIRL Rws 16L-34R and 16R-34L		TDZ/CL Rwy 16R			
REIL Rwy 34R					
<p>1500 4000 VAUGHN</p>		<p>ZIMKE FEKOS ICACA UJOKU</p>		<p>4 NM Holding Pattern</p>	
<p>*LNAV only</p>		<p>UNIYE 2.1 NM to RW34L</p>		<p>164° → 6000 ← 344° 4000</p>	
<p>*1.1 NM to RW34L</p>		<p>2000 2200</p>		<p>GP 3.00° TCH 53</p>	
<p>→ 1.1 NM 1 NM → 2.9 NM → 1.4 NM → 3.9 NM → 6.9 NM →</p>					
CATEGORY	A	B	C	D	
LPV DA		568/40	200 (200-¾)		
LNAV/VNAV DA		657/40	289 (300-¾)		
LNAV MDA	760/40	392 (400-¾)	760/50	392 (400-1)	
CIRCLING	820-1 446 (500-1)	840-1 466 (500-1)	1000-1¾ 626 (700-1¾)	1140-2½ 766 (800-2½)	

NW-1, 08 SEP 2022 to 06 OCT 2022

NW-1, 08 SEP 2022 to 06 OCT 2022