

LOC/DME I-GQR 111.75 Chan 54 (Y)	APP CRS 035°	Rwy Idg TDZE Apt Elev 4270 744 757
---	------------------------	--

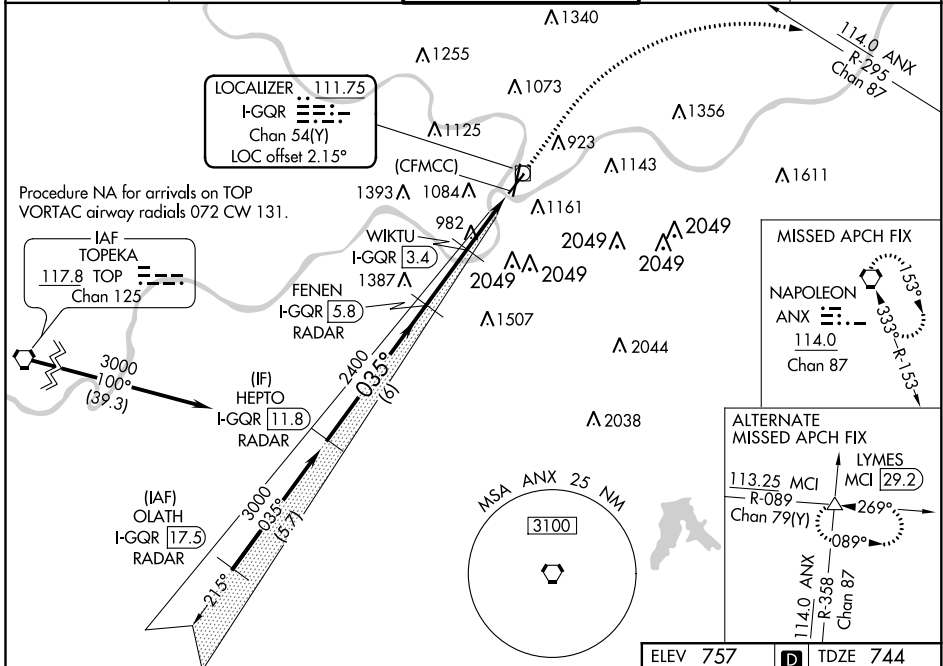
ILS or LOC RWY 3

CHARLES B WHEELER DOWNTOWN (MKC)

DME or RADAR required for procedure entry. DME or RADAR required for LOC only.
 ▼ Autopilot coupled approach NA below 1013. Circling NA east Rwy 1-19.
 ▲ Circling NA to Rwy 21. Circling NA for Cat D to Rwy 3. Rwy 3 helicopter visibility reduction below RVR 4000 NA.

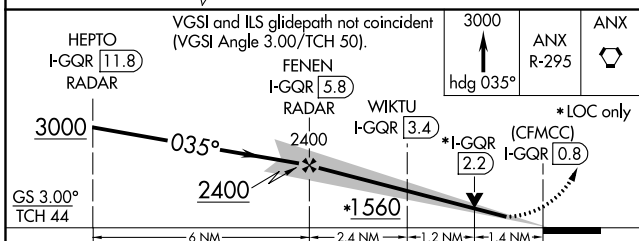
MISSED APPROACH: Climb to 3000 on heading 035° and an ANX VORTAC R-295 to ANX VORTAC and hold.

ATIS 120.75	KANSAS CITY APP CON 118.4 307.35	DOWNTOWN TOWER 133.3 233.7	CLNC DEL 121.9	GND CON 121.9
-----------------------	--	--------------------------------------	--------------------------	-------------------------



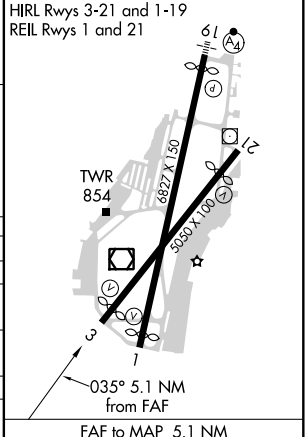
NC-3, 08 SEP 2022 to 06 OCT 2022

NC-3, 08 SEP 2022 to 06 OCT 2022



ELEV 757	TDZE 744
----------	----------

CATEGORY	A	B	C	D
S-ILS 3	994/40 250 (300-¾)			
S-LOC 3	1560/55 816 (900-1)	1560/60 816 (900-1¼)	1560-2½ 816 (900-2½)	NA
C CIRCLING	1560-1 803 (900-1)	1560-1¼ 803 (900-1¼)	1560-2½	803 (900-2½)
WIKTU FIX MINIMUMS (DME REQUIRED)				
S-LOC 3	1240/55	496 (500-1)	1240-1¾ 496 (500-1¾)	NA
C CIRCLING	1380-1 623 (700-1)	1400-1 643 (700-1)	1460-2 703 (800-2)	1540-2½ 783 (800-2½)



Knots	60	90	120	150	180
Min:Sec	5:06	3:24	2:33	2:02	1:42