

WAAS CH 40327 W21A	APP CRS 226°	Rwy Idg TDZE 744 Apt Elev 757	4351
--	------------------------	---	-------------

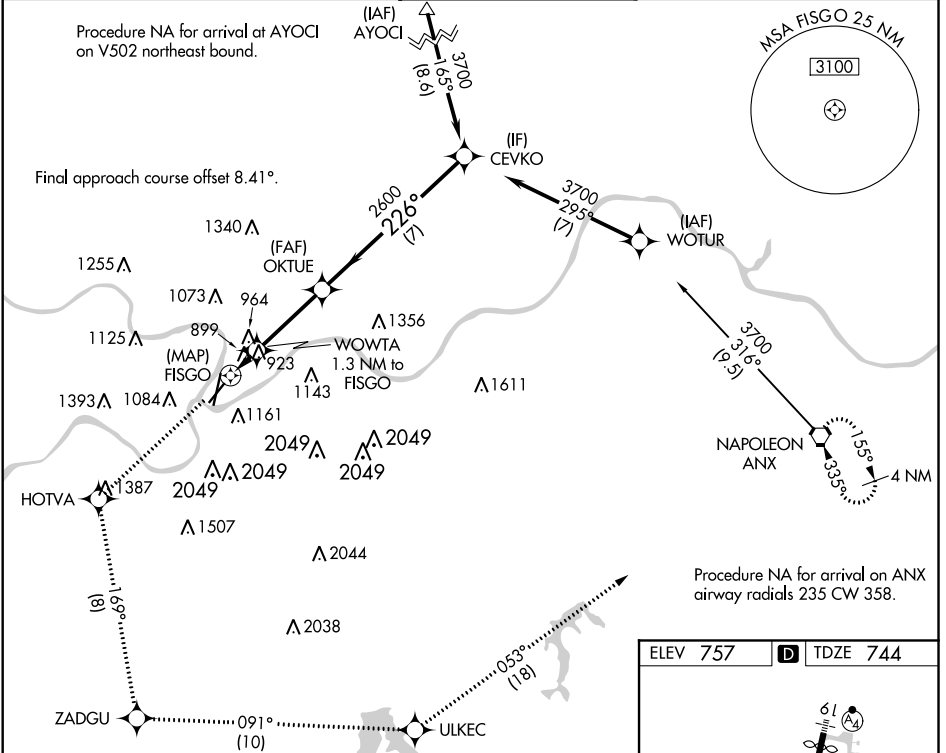
RNAV (GPS) RWY 21

CHARLES B WHEELER DOWNTOWN (MKC)

▼ DME/DME RNP-0.3 NA. Circling Cat D NA Rwy 3. Rwy 21 helicopter visibility reduction below 1 SM NA. Circling to Rwy 21 NA. Straight-in Rwy 21 at night, operational VGSI required, remain at or above VGSI glidepath until threshold. Circling NA east of Rwy 1/19.

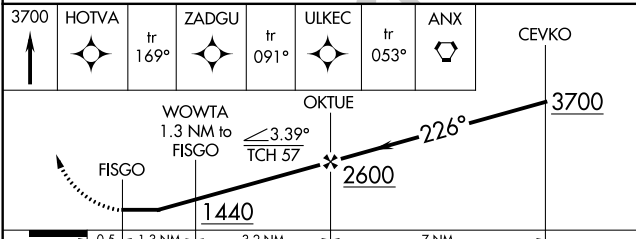
▲ MISSED APPROACH: Climb to 3700 direct HOTVA and on track 169° to ZADGU and on track 091° to ULKEC and on track 053° to ANX VORTAC and hold.

ATIS 120.75	KANSAS CITY APP CON 118.4 307.35	DOWNTOWN TOWER 133.3 233.7	CLNC DEL 121.9	GND CON 121.9
-----------------------	--	--------------------------------------	--------------------------	-------------------------

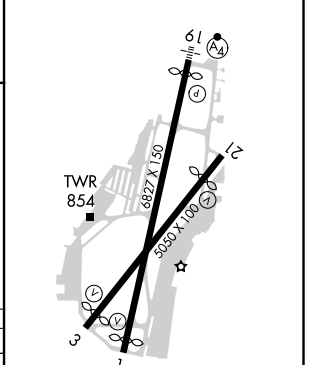


NC-3, 08 SEP 2022 to 06 OCT 2022

NC-3, 08 SEP 2022 to 06 OCT 2022



ELEV 757	D TDZE 744
----------	-------------------



CATEGORY	A	B	C	D
LP MDA	1160-1 416 (500-1)		1160-1½ 416 (500-1½)	NA
LNAV MDA	1260-1 516 (600-1)		1260-1¾ 516 (600-1¾)	NA
C CIRCLING	1380-1 623 (700-1)	1400-1 643 (700-1)	1460-2 703 (800-2)	1540-2½ 783 (800-2½)

REIL Rwy 1 and 21
HIRL Rwy 3-21 and 1-19