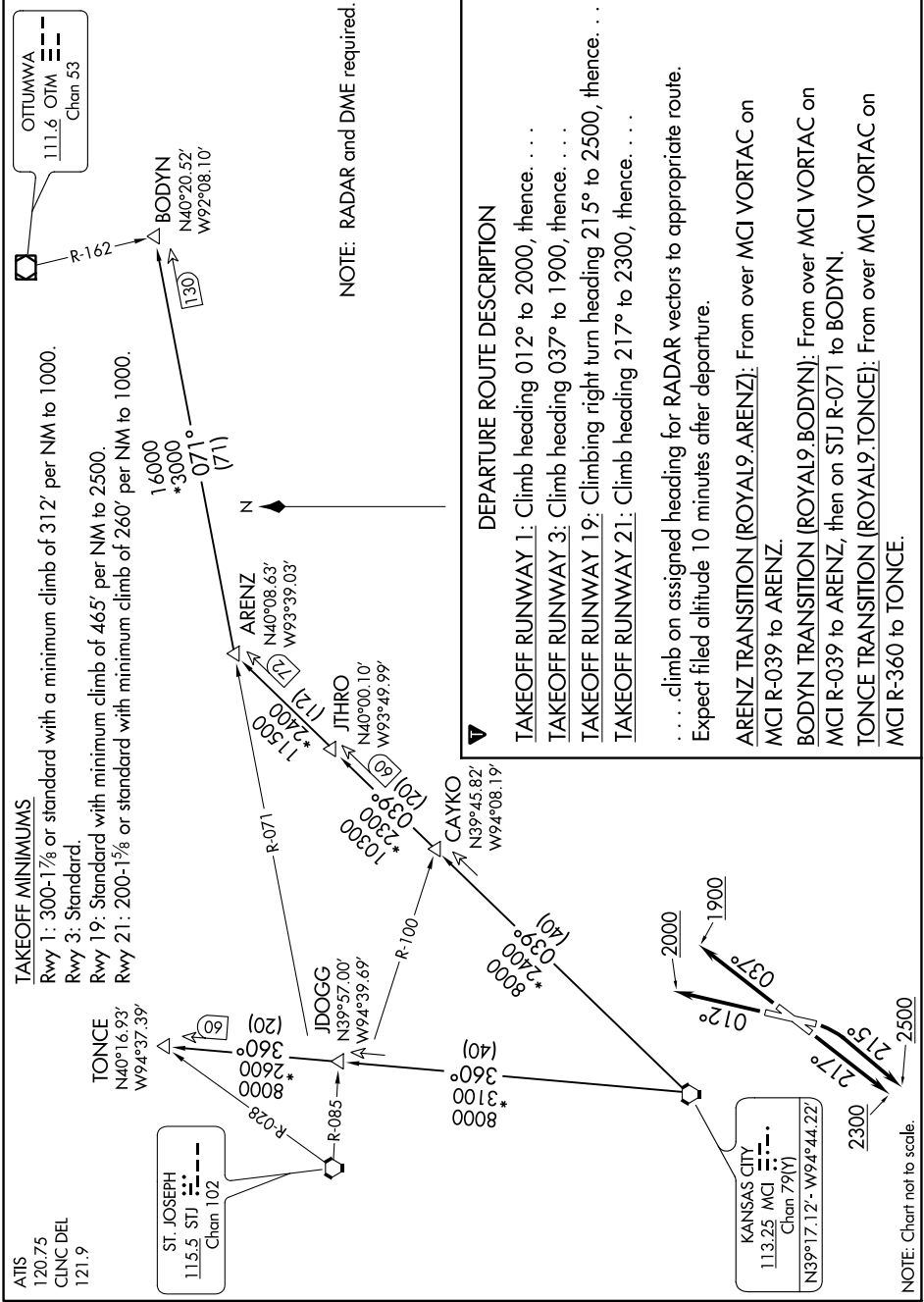


ROYAL NINE DEPARTURE

NC-3, 08 SEP 2022 to 06 OCT 2022



DEPARTURE ROUTE DESCRIPTION

- TAKEOFF RUNWAY 1:** Climb heading 012° to 2000, thence. . .
 - TAKEOFF RUNWAY 3:** Climb heading 037° to 1900, thence. . .
 - TAKEOFF RUNWAY 19:** Climbing right turn heading 215° to 2500, thence. . .
 - TAKEOFF RUNWAY 21:** Climb heading 217° to 2300, thence. . .
- . . . climb on assigned heading for RADAR vectors to appropriate route.
 Expect filed altitude 10 minutes after departure.
- ARENZ TRANSITION (ROYAL9.ARENZ):** From over MCI VORTAC on MCI R-039 to ARENZ.
BODYN TRANSITION (ROYAL9.BODYN): From over MCI VORTAC on MCI R-039 to ARENZ, then on STJ R-071 to BODYN.
TONCE TRANSITION (ROYAL9.TONCE): From over MCI VORTAC on MCI R-360 to TONCE.

NC-3, 08 SEP 2022 to 06 OCT 2022

ROYAL NINE DEPARTURE

NOTE: Chart not to scale.