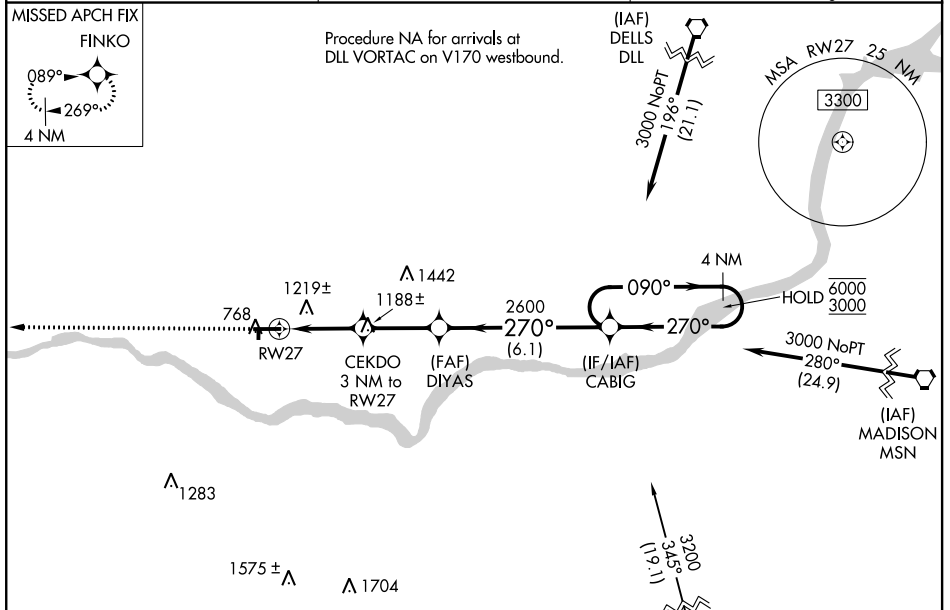


WAAS CH <b>69506</b> <b>W27A</b>	APP CRS <b>270°</b>	Rwy Idg TDZE <b>717</b> Apt Elev <b>717</b>
--	------------------------	---

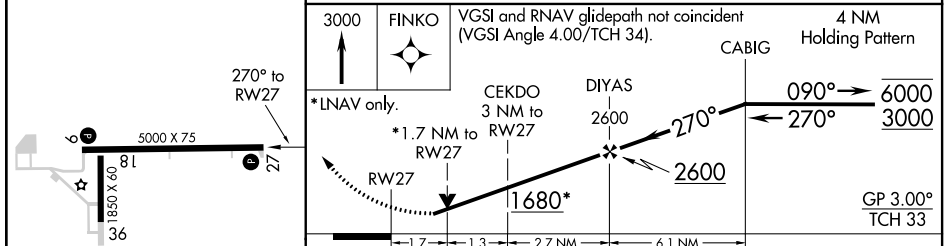
# RNAV (GPS) RWY 27

TRI-COUNTY RGNL (LNR)

RNP APCH	<p>⚠ Circling Rwy 18, 36 NA at night. Baro-VNAV and VDP NA when using Dane County Rgnl-Truax Fld altimeter setting. Rwy 27 helicopter visibility reduction below 3/4 SM NA. For uncompensated Baro-VNAV systems, LNAV/VNAV NA below -22°C or above 54°C. When local altimeter setting not received, use Dane County Rgnl-Truax Fld altimeter setting and increase LPV DA to 1485, LNAV/VNAV DA to 1694, and all MDA 120 feet. Increase LPV visibility all Cats and Circling visibility Cat C 1/2 SM, LNAV visibility Cat A and Circling visibility Cat A 1/4 SM.</p>	<p>MISSSED APPROACH: Climb to 3000 direct FINKO and hold.</p>
ASOS <b>119.425</b>	MADISON APP CON * <b>135.45 343.7</b>	UNICOM <b>123.0 (CTAF) 0</b>



ELEV <b>717</b>	TDZE <b>717</b>
-----------------	-----------------



3000 FINKO	VGSi and RNAV glidepath not coincident (VGSi Angle 4.00/TCH 34).			4 NM Holding Pattern
*LNAV only.	CEKDO 3 NM to RW27	DIYAS 2600	CABIG	6000 / 3000
	*1.7 NM to RW27			GP 3.00° TCH 33

	A	B	C	D
CATEGORY	A	B	C	D
LPV DA	1375-2	658 (700-2)		NA
LNAV/VNAV DA	1584-4	867 (900-4)		NA
LNAV MDA	1480-1 763 (800-1)	1480-1¼ 763 (800-1¼)	1480-2½ 763 (800-2½)	NA
CIRCLING	1520-1 803 (900-1)	1520-1¼ 803 (900-1¼)	1560-2½ 843 (900-2½)	NA

REIL Rwy 27 0  
MIRL Rwy 9-27 and 18-36 0

EC-3, 08 SEP 2022 to 06 OCT 2022

EC-3, 08 SEP 2022 to 06 OCT 2022