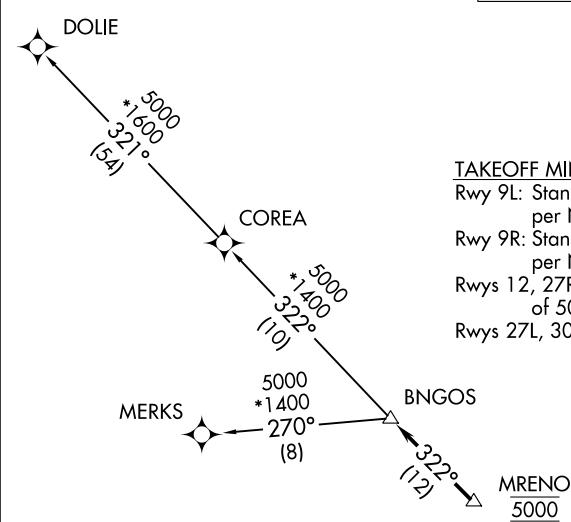


RNAV-1 DME/DME/IRU or GPS.	TOP ALTITUDE: ASSIGNED BY ATC	ATIS
RADAR required.		125.9 CLNC DEL 119.2 GND CON 120.025 OPA LOCKA TOWER ★ 134.675 (CTAF) MIAMI DEP CON 119.45 290.325



TAKEOFF MINIMUMS

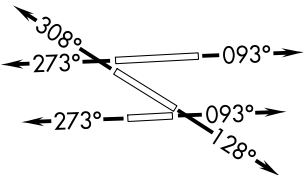
Rwy 9L: Standard with minimum climb of 500' per NM to 1000.

Rwy 9R: Standard with minimum climb of 500' per NM to 700.

Rwys 12, 27R: Standard with minimum climb of 500' per NM to 600.

Rwys 27L, 30: Standard.

NOTE: Jet aircraft only.  
NOTE: Accelerate to 250K, if unable, advise ATC.  
NOTE: MERKS Transition ATC assigned only except aircraft landing: MKY, RSW, APF, and FMY.



NOTE: Chart not to scale.

DEPARTURE ROUTE DESCRIPTION
<p>TAKEOFF RUNWAYS 9L/R: Climb on heading 093° or as assigned for RADAR vectors to cross MRENO at 5000, thence. . .</p> <p>TAKEOFF RUNWAY 12: Climb on heading 128° or as assigned for RADAR vectors to cross MRENO at 5000, thence. . .</p> <p>TAKEOFF RUNWAYS 27L/R: Climb on heading 273° or as assigned for RADAR vectors to cross MRENO at 5000, thence. . .</p> <p>TAKEOFF RUNWAY 30: Climb on heading 308° or as assigned for RADAR vectors to cross MRENO at 5000, thence. . .</p> <p>. . .on track 322° to BNGOS, then on transition, maintain ATC assigned altitude, expect clearance to filed altitude within 10 minutes after departure.</p> <p>COREA TRANSITION (BNGOS2.COREA)</p> <p>DOLIE TRANSITION (BNGOS2.DOLIE)</p> <p>MERKS TRANSITION (BNGOS2.MERKS)</p>