

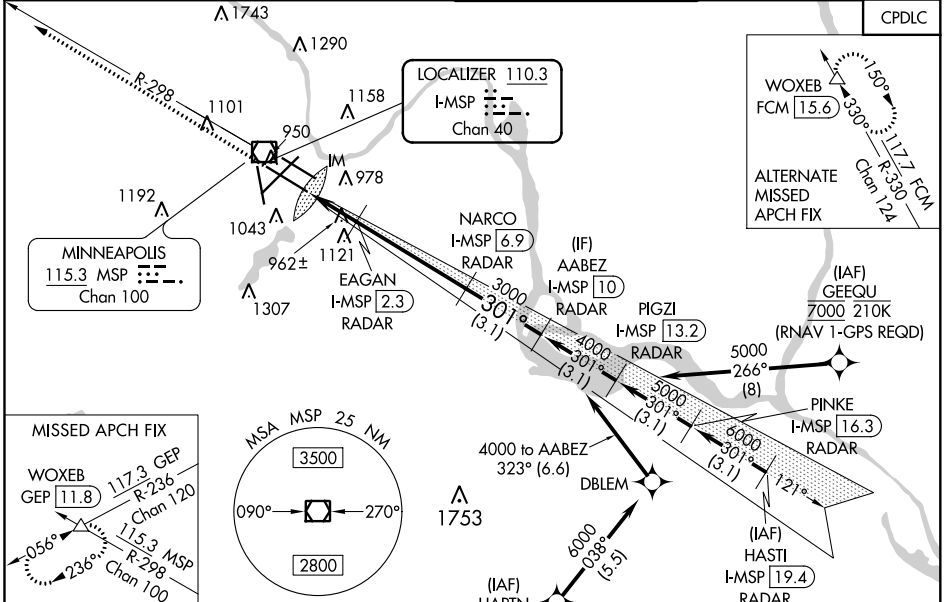
LOC/DME I-MSP <b>110.3</b> Chan <b>40</b>	APP CRS <b>301°</b>	Rwy Idg TDZE Apt Elev	<b>10000</b> <b>823</b> <b>842</b>
---	------------------------	-----------------------------	--

# ILS or LOC RWY 30L

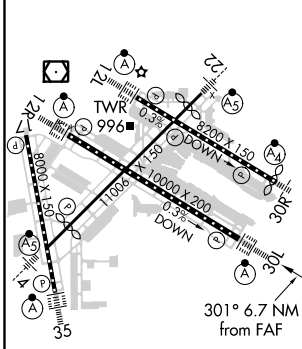
MINNEAPOLIS-ST PAUL INTL/WOLD-CHAMBERLAIN (MSP)

<p><b>▼</b> DME or RADAR required. Simultaneous approaches authorized with Rwy 30R and ILS V Rwy 35 (CONVERGING). For inop ALS, increase S-ILS 30L Cat E visibility to RVR 4000, and increase S-LOC 30L Cat E visibility to RVR 6000.</p>	<p>ALS-F-2 </p>	<p>MISSED APPROACH: Climb to 1300 then climb to 3000 on heading 301° and MSP VOR/DME R-298 to WOXEB INT/ GEP VORTAC 11.8 DME and hold.</p>
---	---------------------	--

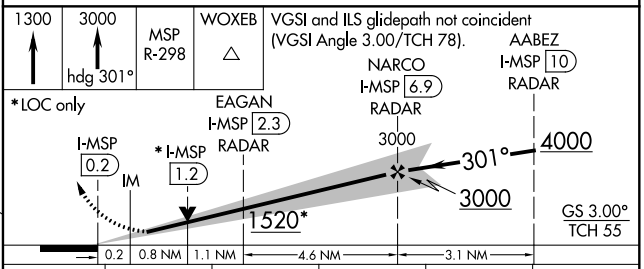
D-ATIS ARR <b>135.35</b> <b>239.275</b> DEP <b>120.8</b>	MINNEAPOLIS APP CON <b>118.725 335.65</b> (Rwy 35) <b>119.3 335.65</b> (12L-30R, 4-22, 17) <b>126.95 335.65</b> (12R-30L)	MINNEAPOLIS TOWER <b>123.675 273.55</b> (17-35) <b>123.95 273.55</b> (12L-30R) <b>126.7 273.55</b> (12R-30L, 4-22)	GND CON <b>N 121.8 348.6</b> <b>S 121.9 348.6</b> <b>W 127.925 348.6</b>	CLNC DEL <b>133.2</b>
--	--	---	---	--------------------------



ELEV <b>842</b>	<b>D</b>	TDZE <b>823</b>
-----------------	----------	-----------------



HIRL all Rwy	REIL Rwy 17	TDZ/CL Rwy 12L, 12R, 30L, and 35			
FAF to MAP 6.7 NM					
Knots	60	90	120	150	180
Min:Sec	6:42	4:28	3:21	2:41	2:14



CATEGORY	A	B	C	D	E
S-ILS 30L	1023/18 200 (200-1/2)				
S-LOC 30L	1220/24	397 (400-1/2)	1220/35 397 (400-5/8)		
<b>C</b> CIRCLING	1360-1	518 (600-1)	1460-1 3/4 618 (700-1 1/4)	1660-2 3/4 818 (900-2 3/4)	1800-3 958 (1000-3)

# ILS or LOC RWY 30L

NC-1, 08 SEP 2022 to 06 OCT 2022

NC-1, 08 SEP 2022 to 06 OCT 2022