

LOC/DME I-HINN 110.7 Chan 44	APP CRS 301°	Rwy Idg TDZE Apt Elev	8000 822 842
--	------------------------	-----------------------------	---

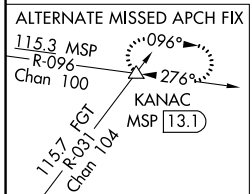
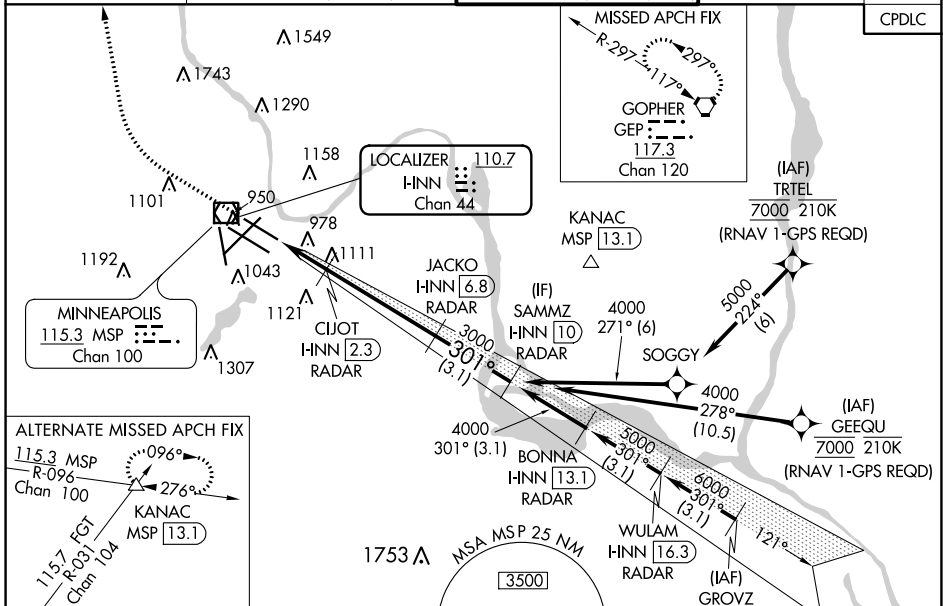
ILS or LOC RWY 30R

MINNEAPOLIS-ST PAUL INTL/WOLD-CHAMBERLAIN (MSP)

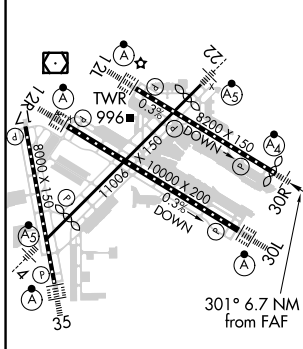
⚠ Simultaneous approaches authorized with Rwy 30L and ILS V RWY 35 (CONVERGING). For inop ALS, increase S-LOC 30R Cat D/E visibility to 1 3/8 SM. Inop table does not apply to S-ILS 30R all Cats. DME or RADAR required.

MAJLF MISSED APPROACH: Climb to 1300, then climbing right turn to 3000 direct GEP VORTAC and hold.

D-ATIS ARR 135.35 239.275 DEP 120.8	MINNEAPOLIS APP CON 118.725 335.65 (Rwy 35) 119.3 335.65 (12L-30R, 4-22, 17) 126.95 335.65 (12R-30L)	MINNEAPOLIS TOWER 123.675 273.55 (17-35) 123.95 273.55 (12L-30R) 126.7 273.55 (12R-30L, 4-22)	GND CON N 121.8 348.6 S 121.9 348.6 W 127.925 348.6	CLNC DEL 133.2
--	--	---	---	--------------------------

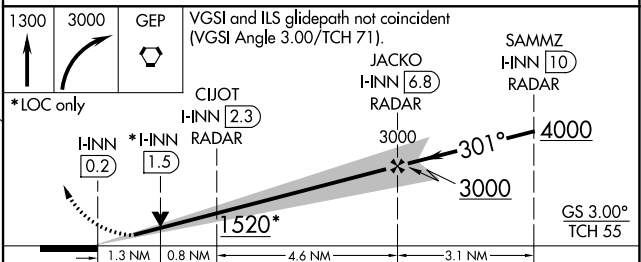


ELEV 842	D	TDZE 822
----------	----------	----------



HIRL all Rwys
REIL Rwy 17
TDZ/CL Rwys 12L, 12R, 30L, and 35
FAF to MAP 6.7 NM

Knots	60	90	120	150	180
Min:Sec	6:42	4:28	3:21	2:41	2:14



CATEGORY	A	B	C	D	E
S-ILS 30R	1072/40 250 (300-3/4)				
S-LOC 30R	1320/40 498 (500-3/4)	1320/60 498 (500-1 1/4)			
C CIRCLING	1360-1 518 (600-1)	1460-1 3/4 618 (700-1 3/4)	1660-2 3/4 818 (900-2 3/4)	1800-3 958 (1000-3)	

NC-1, 08 SEP 2022 to 06 OCT 2022

NC-1, 08 SEP 2022 to 06 OCT 2022