

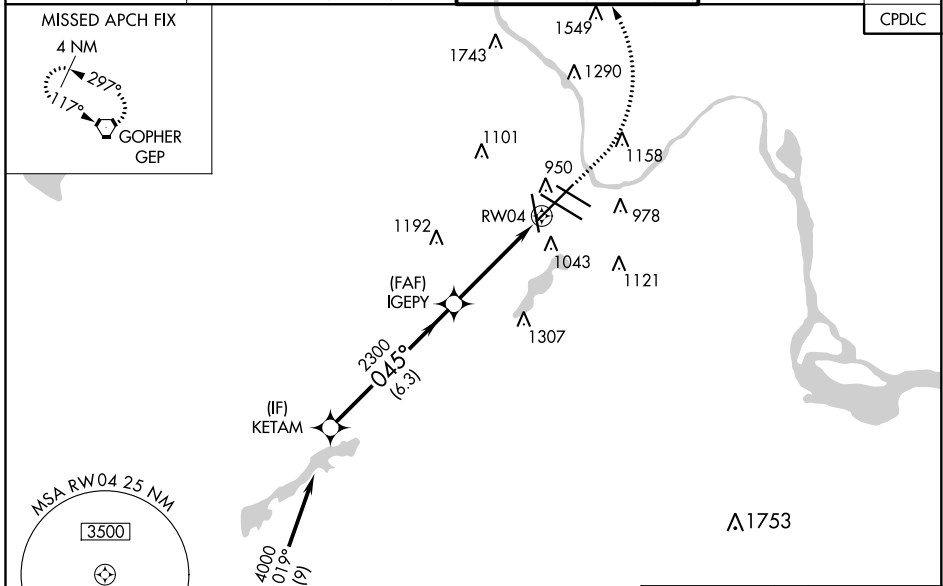
| | | |
|--|------------------------|---|
| WAAS CH 72931 W04A | APP CRS 045° | Rwy Idg 9456 TDZE 832 Apt Elev 842 |
|--|------------------------|---|

RNAV (GPS) RWY 4

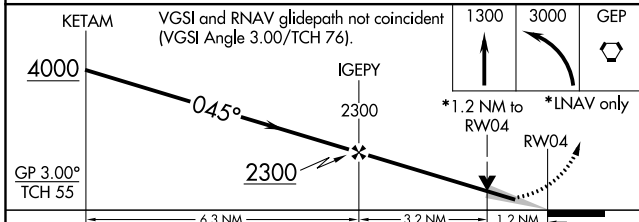
MINNEAPOLIS-ST PAUL INTL/WOLD-CHAMBERLAIN (MSP)

| | | |
|---|--------|--|
| RNP APCH. | MALSRL | MISSED APPROACH: Climb to 1300 then climbing left turn to 3000 direct GEP VORTAC and hold. |
| <p>▼ For uncompensated Baro-VNAV systems, LNAV/VNAV NA below -19°C or above 54°C. For inop ALS, increase LPV Cat E visibility to RVR 4000, LNAV/VNAV Cat E visibility to 1 3/8 SM, LNAV Cat C/D/E visibility to 1 3/8 SM. #RVR 1800 authorized with use of FD or AP or HUD to DA.</p> | | |

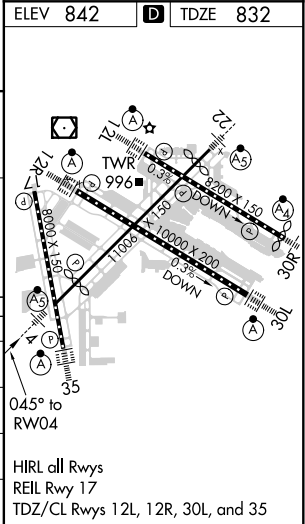
| | | | | |
|---|--|---|---|--------------------------|
| D-ATIS ARR 135.35 239.275 DEP 120.8 | MINNEAPOLIS APP CON 118.725 335.65 (Rwy 35) 119.3 335.65 (12L-30R, 4-22, 17) 126.95 335.65 (12R-30L) | MINNEAPOLIS TOWER 123.675 273.55 (17-35) 123.95 273.55 (12L-30R) 126.7 273.55 (12R-30L, 4-22) | GND CON N 121.8 348.6 S 121.9 348.6 W 127.925 348.6 | CLNC DEL 133.2 |
|---|--|---|---|--------------------------|



Procedure NA for arrivals at LYDIA on V505 southbound and on V26 westbound.



| | | | | | | | |
|--------------------|---|---------------|------------------------------|------------------------------|------------------------|-----------------------------|-----|
| KETAM | VGSIs and RNAV glidepath not coincident (VGSi Angle 3.00/TCH 76). | | | | 1300 | 3000 | GEP |
| 4000 | IGEPY | | | | 2300 | *1.2 NM to RWY04 *LNAV only | |
| GP 3.00° TCH 55 | 2300 | | | | RWY04 | | |
| CATEGORY | A | B | C | D | E | | |
| LPV DA# | 1032/24 200 (200-1/2) | | | | | | |
| LNAV/VNAV DA | 1281/45 449 (500-7/8) | | | | | | |
| LNAV MDA | 1300/24 | 468 (500-1/2) | 1300/50 | | 468 (500-1) | | |
| CIRCLING | 1360-1 | 518 (600-1) | 1460-1 3/4 618 (700-13/4) | 1660-2 3/4 818 (900-23/4) | 1800-3 958 (1000-3) | | |



RNAV (GPS) RWY 4

NC-1, 08 SEP 2022 to 06 OCT 2022

NC-1, 08 SEP 2022 to 06 OCT 2022