

# RNAV (GPS) RWY 32

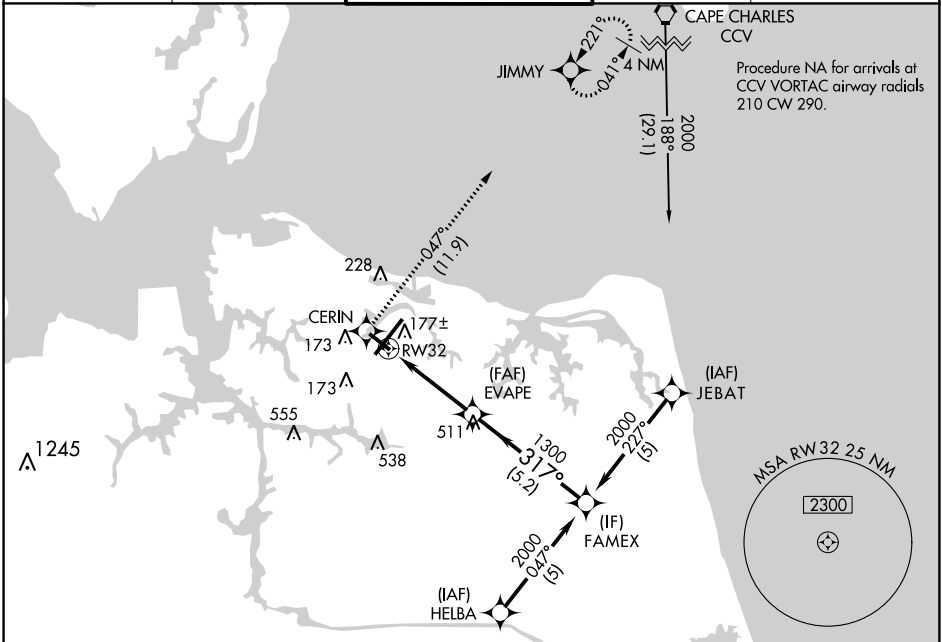
NORFOLK INTL (ORF)

APP CRS <b>317°</b>	Rwy Idg <b>3900</b>
	TDZE <b>25</b>
	Apt Elev <b>26</b>

**▽** DME/DME RNP-0.3 NA. Helicopter visibility reduction below 3/4 SM NA.  
**▲**

MISSED APPROACH: Climb to 2000 direct CERIN and on track 047° to JIMMY and hold.

ATIS <b>127.15</b>	NORFOLK APP CON <b>118.9 353.7</b>	NORFOLK TOWER <b>120.8 257.8</b>	GND CON <b>121.9</b>	CLNC DEL <b>118.5</b>
-----------------------	---------------------------------------	-------------------------------------	-------------------------	--------------------------



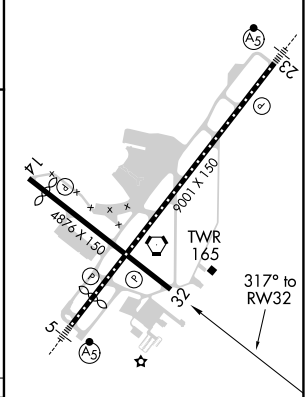
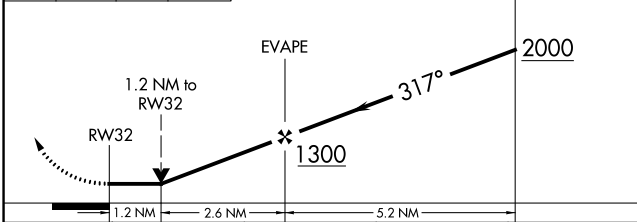
Procedure NA for arrivals at SUNNS on V139 southwest bound.

SUNNS  $\begin{matrix} 2000 \\ 056 \\ (23.7) \end{matrix}$

ELEV 26	<b>D</b> TDZE 25
---------	------------------

Visual Segment - Obstacles.

2000 CERIN tr 047° JIMMY



CATEGORY	A	B	C	D
LNNAV MDA	440-1	415 (500-1)	440-1½	415 (500-1½)
<b>CIRCLING</b>	480-1 454 (500-1)	540-1 514 (600-1)	540-1½ 514 (600-1½)	900-2¾ 874 (900-2¾)

REIL Rwy 14 and 32  
 HIRL Rwy 5-23  
 MIRL Rwy 14-32

NE-3, 08 SEP 2022 to 06 OCT 2022

NE-3, 08 SEP 2022 to 06 OCT 2022