

OGDEN, UTAH

HI-TACAN Z RWY 14

TACAN HIF Chan 49	APCH CRS 131°	Rwy ldg TDZE Arprt Elev	13,500 4786 4789
-------------------	---------------	-------------------------	------------------------

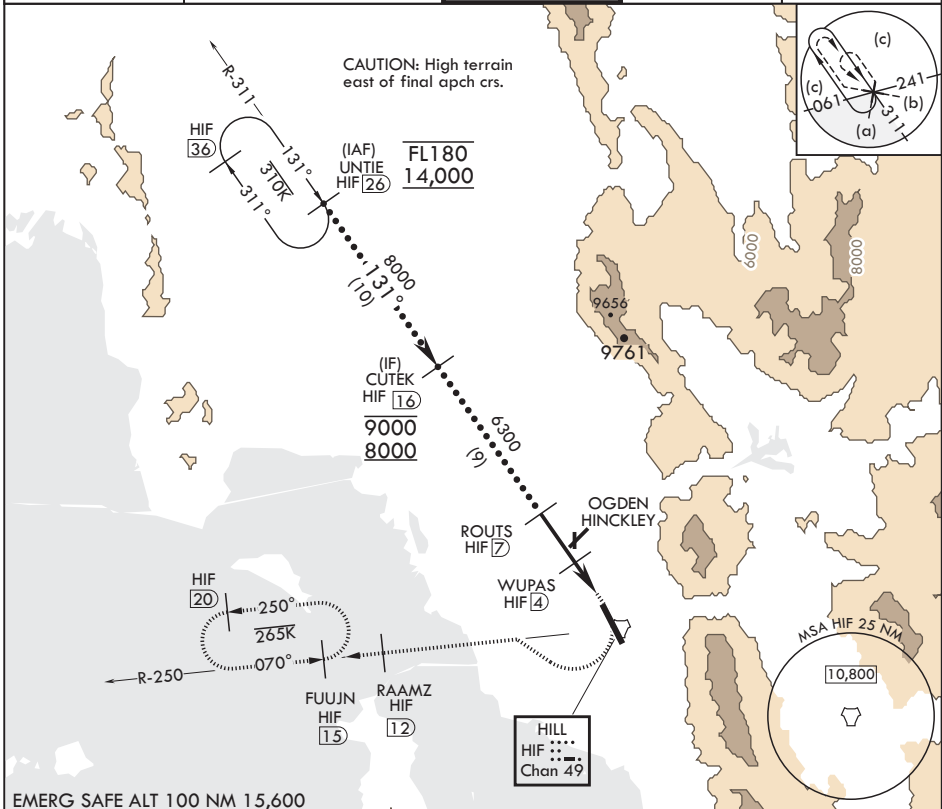
AL-296 (USAF)

HILL AFB (KHIF)

⚠ * When ALS inop, increase CAT CDE RVR to 55, vis to 1 mile.
 ** Circling not authorized in sector NE of Rwy 14-32.

ALSF-2
 MISSED APPROACH: Climb to 5300, then turn right heading 290°, remain within HIF TACAN 5.7 DME until established on 290° heading. Intercept the HIF R-250 outbound. Cross RAAMZ at 6500, then climb and maintain 7200 direct to FUJUN and hold.

ATIS 134.925 397.9	SALT LAKE CITY APP CON 121.1 319.25	TOWER 127.15 263.15	GND CON 121.6 275.8	CLNC DEL 124.1 335.8
-----------------------	--	------------------------	------------------------	-------------------------

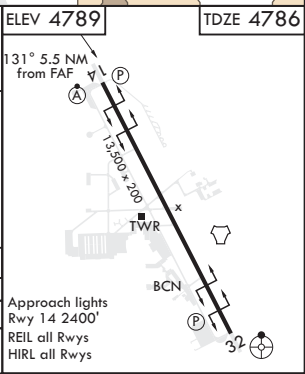


SW-4, 08 SEP 2022 to 06 OCT 2022

SW-4, 08 SEP 2022 to 06 OCT 2022

EMERG SAFE ALT 100 NM 15,600

UNTIE (26)	VGSI and descent angle not coincident (VGSI Angle 2.80/TCH 59).	5300	6500	RAAMZ HIF (12) 6500	ELEV 4789	TDZE 4786
FL180 14,000	CUTEK (16)	ROUTS (7)	WUPAS (4)	JESGO (2.1)	TACAN	
3.25° ≥ TCH 59	9000 8000	6300	5700			
		3 NM	1.9 NM	.6		
CATEGORY	C	D	E			
S-14*	5160/40	374	(400-3/4)			
CIRCLING**	5340-2	551 (600-2)	5900-3 (1200-3)			



OGDEN, UTAH

41°07'N - 111°58'W

HILL AFB (KHIF)

Amdt 8 07OCT21
TERPS

HI-TACAN Z RWY 14