

ILONN 1 DP (ILONN1 • ILONN) SHL-296 [USAF]

OGDEN, UTAH

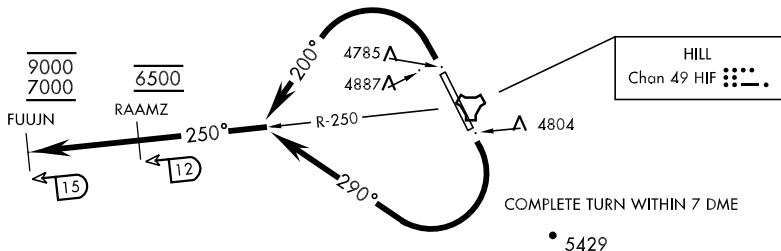
ATIS 134.925 397.9
 CLNC DEL
 124.1 335.8
 GND CON
 121.6 275.8
 HILL TOWER
 127.15 263.15
 SALT LAKE CITY
 DEP CON
 121.1 319.25
 CLOVER CON
 134.1 285.65

Rwy	Knots	60	120	180	240	300	360
14 (a)	V/V(fpm)	580	1160	1740	2320	2900	3480
14 (b)	V/V(fpm)	260	520	780	1040	1300	1560
32 (c)	V/V(fpm)	660	1320	1980	2640	3300	3960

ATC Climb Rate

- (a) To 5200
- (b) From 5200 to 6300
- (c) To 5700

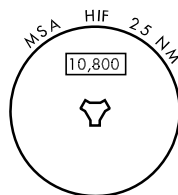
FOR STEREO FLIGHT
PLAN USE ONLY



COMPLETE TURN WITHIN 7 DME

• 5429

AIRSPEED IN EXCESS OF 350 KIAS NOT
 AUTHORIZED UNTIL ESTABLISHED:
 RWY 14 HEADING 290°
 RWY 32 HEADING 200°



EMERG SAFE ALT 100 NM 15,600

DEPARTURE ROUTE DESCRIPTION

TAKE-OFF RWY 14: Turn right heading 290°, intercept HIF TACAN R-250 outbound prior to 12 DME (complete turn within 7 DME), cross RAAMZ at 6500, maintain block 7000 through 9000.

TAKE-OFF RWY 32: Turn left heading 200°, intercept HIF TACAN R-250 outbound prior to 12 DME, cross RAAMZ at 6500, maintain block 7000 through 9000.