

# ILS or LOC Z RWY 14

LOC I-HIF <b>109.9</b>	APCH CRS <b>139°</b>	Rwy Idg <b>13,500</b> TDZE <b>4786</b> Arprt Elev <b>4789</b>
---------------------------	-------------------------	---

AL-296 [USAF]

HILL AFB (KHIF)

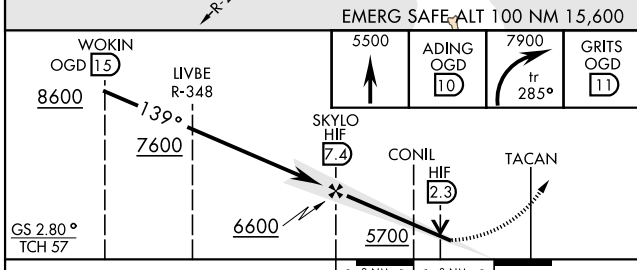
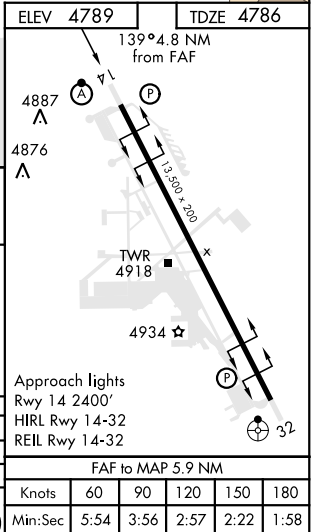
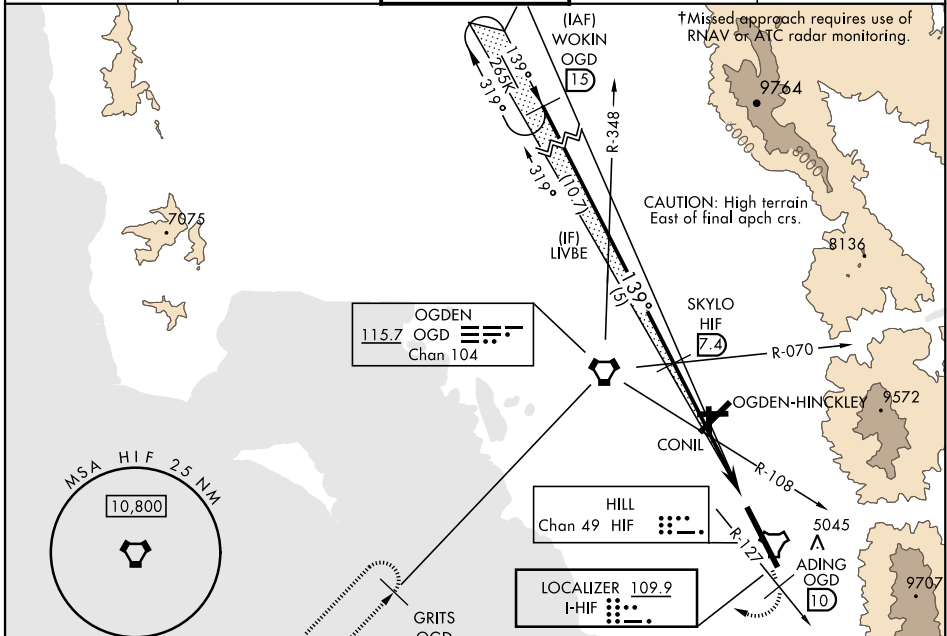
DME required.

- ▼ \* When ALS inop, increase RVR to 40, vis to ¾ mile.
- \*\* When ALS inop, increase RVR to 55, vis to 1 mile.
- \*\*\* Circling not authorized NE of Rwy 14-32.



† MISSED APPROACH: To 5500 direct ADING, then climbing right turn to 7900, track 285° heading intercept OGD VORTAC R-209 to GRITS and hold.

ATIS <b>134.925 397.9</b>	SALT LAKE CITY APP CON <b>121.1 319.25</b>	TOWER <b>127.15 263.15</b>	GND CON <b>121.6 275.8</b>	CLNC DEL <b>124.1 335.8</b>
------------------------------	---	-------------------------------	-------------------------------	--------------------------------



CATEGORY	A	B	C	D	E
S-ILS 14 *	4986/24 200 (200-½)				
S-LOC 14 **	5080/24 294 (300-½)				
*** CIRCLING	5280-1 491 (500-1)	5280-1½ 491(500-½)	5340-2 551(600-2)	5880-3 1091(1100-3)	

OGDEN, UTAH

41° 07'N-111° 58'W

HILL AFB (KHIF)

Amdt 4 24MAR22

# ILS or LOC Z RWY 14

SW-4, 08 SEP 2022 to 06 OCT 2022

SW-4, 08 SEP 2022 to 06 OCT 2022

FAF to MAP 5.9 NM					
Knots	60	90	120	150	180
Min:Sec	5:54	3:56	2:57	2:22	1:58