
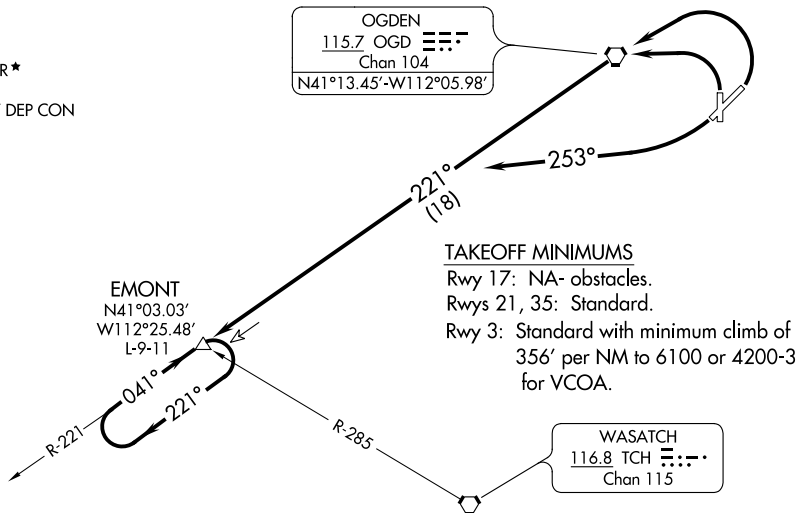


ATIS
125.55
GND CON
121.7
OGDEN TOWER*
118.7 253.5
SALT LAKE CITY DEP CON
121.1 319.25

OGDEN
115.7 OGD 
Chan 104
N41°13.45'-W112°05.98'



TAKEOFF MINIMUMS

Rwy 17: NA- obstacles.
Rwys 21, 35: Standard.
Rwy 3: Standard with minimum climb of 356' per NM to 6100 or 4200-3 for VCOA.

TAKEOFF OBSTACLE NOTES

Rwy 3: Navaid, vehicle on road beginning 195' from DER, 267' right of centerline, up to 17' AGL/4426' MSL.

Pole 241' from DER, 535' left of centerline, 39' AGL/4447' MSL.

Pole 348' from DER, 582' right of centerline, 41' AGL/4451' MSL.

Trees, building beginning 375' from DER, 62' left of centerline, up to 4451' MSL.

Tree, pole beginning 430' from DER, 502' right of centerline, up to 4455' MSL.

Rwy 21: Tree 702' from DER, 649' left of centerline, 4492' MSL.

Tree 1133' from DER, 701' left of centerline, 4513' MSL.

Trees, building, pole beginning 2074' from DER, 792' left of centerline, up to 4570' MSL.

Tree 3429' from DER, 421' right of centerline, 4561' MSL.

Rwy 35: Tree 209' from DER, 185' left of centerline, 4446' MSL.

Tree 243' from DER, 233' left of centerline, 4447' MSL.

Trees beginning 292' from DER, 87' right of centerline, up to 4454' MSL.

Tree 686' from DER, 397' right of centerline, 4479' MSL.

NOTE: Chart not to scale.

DEPARTURE ROUTE DESCRIPTION

TAKEOFF RUNWAY 3: Climbing left turn direct OGD VORTAC then on OGD R-221 to EMONT INT/OGD 18 DME, thence. . . .

VCOA RUNWAY 3: Obtain ATC approval for VCOA when requesting IFR clearance. Climb in visual conditions to cross OGD VORTAC southwest bound at or above 8500, then on OGD R-221 to EMONT, thence. . . .

TAKEOFF RUNWAY 21: Climbing right turn heading 253° to intercept OGD R-221 to EMONT INT/OGD 18 DME, thence. . . .

TAKEOFF RUNWAY 35: Climbing left turn direct OGD VORTAC then on OGD R-221 to EMONT INT/OGD 18 DME, thence. . . .

. . . .Climb in EMONT INT holding pattern to MEA for assigned route of flight.