

LOC/DME I-OGD 111.7 Chan 54	APP CRS 034°	Rwy Idg 7252 TDZE 4473 Apt Elev 4473
---	------------------------	---

ILS or LOC RWY 3

OGDEN-HINCKLEY (OGD)

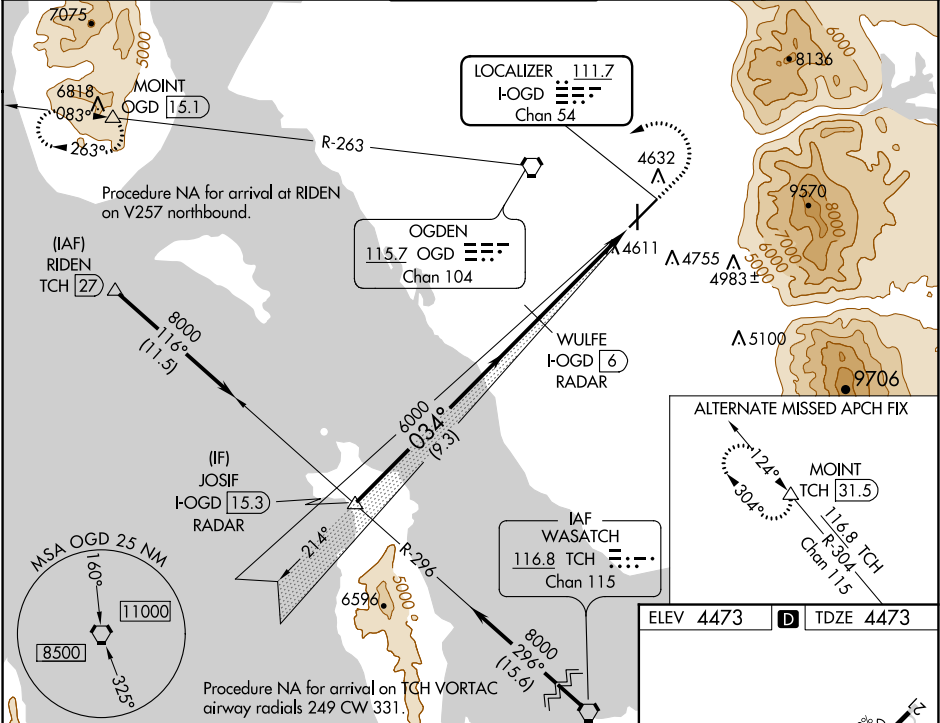
DME required. RADAR required for procedure entry.

- ▼ Rwy 3 helicopter visibility reduction below ¾ SM NA. For inop ALS, increase S-ILS 3 all Cats visibility to ¾ SM. For inop ALS, increase S-LOC 3 Cat C/D visibility to 1 ½ SM. Circling NA for Cats C and D east of Rwy 21 and 35.



MISSED APPROACH: Climb to 5000 then climbing left turn to 9000 direct OGD VORTAC and on OGD VORTAC R-263 to MOINT/OGD 15.1 DME and hold, continue climb-in-hold to 9000.

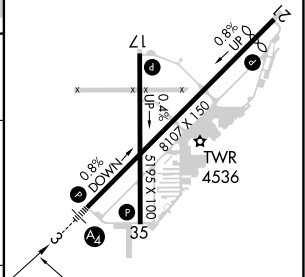
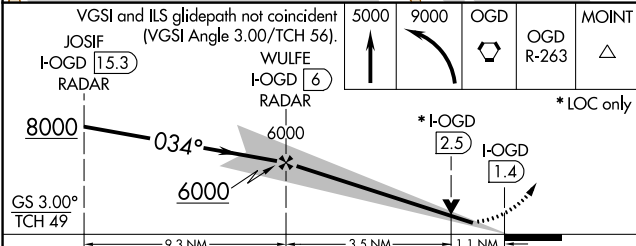
ATIS 125.55	SALT LAKE CITY APP CON 121.1 319.25	OGDEN TOWER* 118.7 (CTAF) 0 253.5	GND CON 121.7	UNICOM 122.95
-----------------------	---	---	-------------------------	-------------------------



SW-4, 08 SEP 2022 to 06 OCT 2022

SW-4, 08 SEP 2022 to 06 OCT 2022

ELEV 4473	D TDZE 4473
-----------	-------------



CATEGORY	A	B	C	D
S-ILS 3	4740-¾		267 (300-¾)	
S-LOC 3	4880-¾	407 (500-¾)	4880-1	407 (500-1)
CIRCLING	4980-1 507 (600-1)	5100-1 627 (700-1)	5100-1¾ 627 (700-1¾)	5180-2¼ 707 (800-2¼)

FAF to MAP 4.6 NM					
Knots	60	90	120	150	180
Min:Sec	4:36	3:04	2:18	1:50	1:32