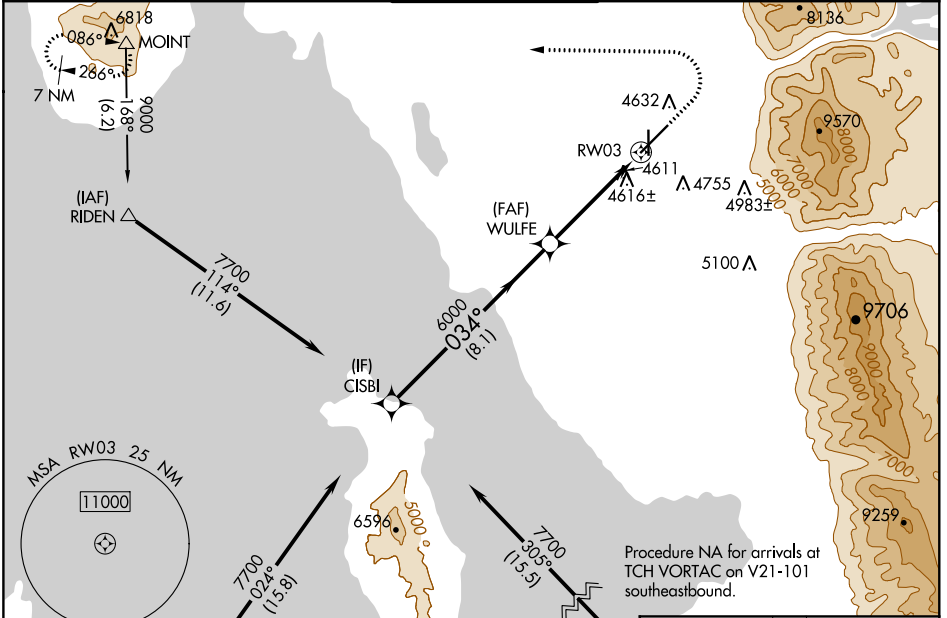


WAAS CH <b>65620</b> <b>W03A</b>	APP CRS <b>034°</b>	Rwy Idg TDZE Apt Elev	<b>7252</b> <b>4473</b> <b>4473</b>
--	------------------------	-----------------------------	---

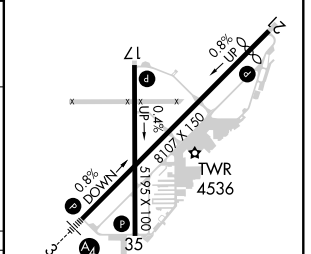
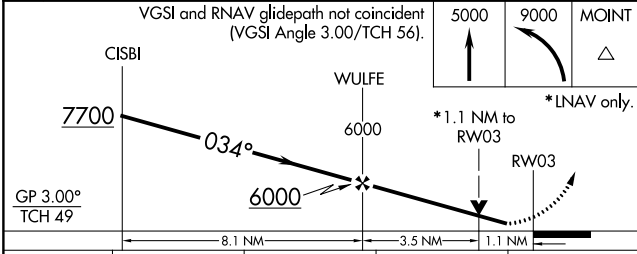
# RNAV (GPS) RWY 3

OGDEN-HINCKLEY (OGD)

RNP APCH.		MALS	MISSED APPROACH: Climb to 5000 then climbing left turn to 9000 direct MOINT and hold, continue climb-in-hold to 9000.	
<p>▼ Baro-VNAV and VDP NA when using Hill AFB altimeter setting. For uncompensated Baro-VNAV systems, LNAV/VNAV NA below -17°C or above 50°C. When local altimeter setting not received, use Hill AFB altimeter setting. Circling NA for Cats C and D east of Rwy 21 and 35. For Inop ALS, increase LPV all Cats visibility to ½ SM, increase LNAV/VNAV all Cats and LNAV Cat C/D visibility to 1 ½ SM.</p>				
ATIS <b>125.55</b>	SALT LAKE CITY APP CON <b>121.1 319.25</b>	OGDEN TOWER* <b>118.7 (CTAF) 0 253.5</b>	GND CON <b>121.7</b>	UNICOM <b>122.95</b>



ELEV 4473	TDZE 4473
-----------	-----------



CATEGORY	A	B	C	D
LPV DA	4741-¾		268 (300-¾)	
LNAV/VNAV DA	4889-1		416 (500-1)	
LNAV MDA	4880-¾		407 (500-¾)	
CIRCLING	4980-1 507 (600-1)	5100-1 627 (700-1)	5100-1¾ 627 (700-1¾)	5180-2¼ 707 (800-2¼)

HIRL Rwy 3-21	⓪
MIRL Rwy 17-35	⓪
REIL Rwy 17 and 35	⓪

SW-4, 08 SEP 2022 to 06 OCT 2022

SW-4, 08 SEP 2022 to 06 OCT 2022