

WAAS CH <b>40020</b> <b>W35A</b>	APP CRS <b>349°</b>	Rwy Idg <b>7004</b> TDZE <b>103</b> Apt Elev <b>121</b>
--	------------------------	---

# RNAV (GPS) RWY 35

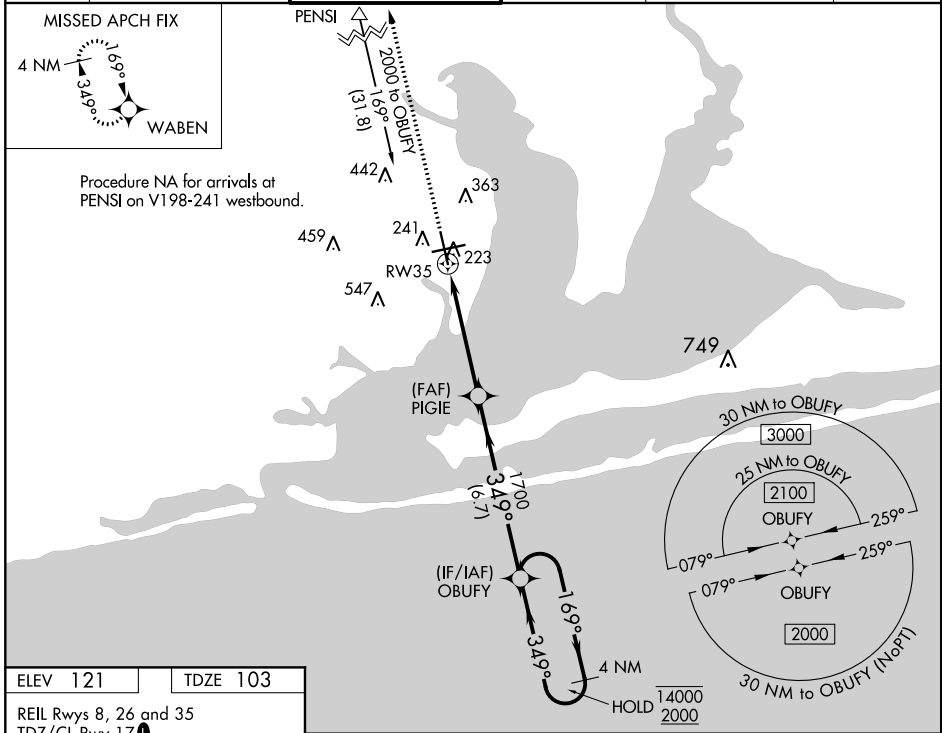
PENSACOLA INTL (PNS)

RNP APCH-GPS.

**▼** For uncompensated Baro-VNAV systems, LNAV/VNAV NA below 1°C or above 54°C. **▲** CAUTION: Intensive VFR student training in vicinity of airport.

MISSED APPROACH: Climb to 2700 direct WABEN and hold.

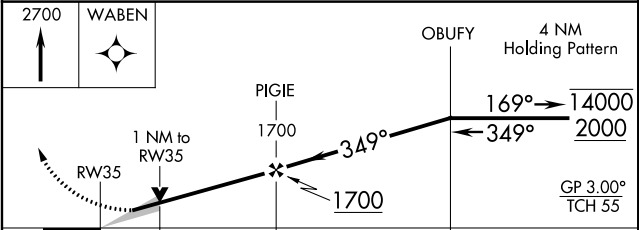
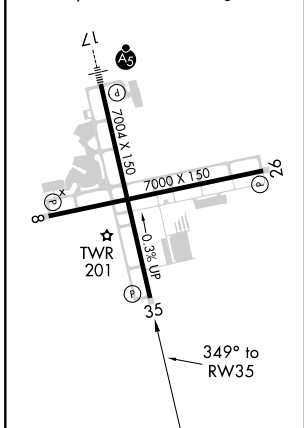
ATIS <b>121.25</b>	PENSACOLA APP CON <b>119.0 269.375</b>	PENSACOLA TOWER ★ <b>119.9 (CTAF) 0 257.8</b>	GND CON <b>121.9 348.6</b>	CLNC DEL <b>123.725 256.875</b>	UNICOM <b>122.95</b>
-----------------------	---	--	-------------------------------	------------------------------------	-------------------------



Procedure NA for arrivals at PENSI on V198-241 westbound.

ELEV <b>121</b>	TDZE <b>103</b>
-----------------	-----------------

REIL Rwy 8, 26 and 35  
TDZ/CL Rwy 17  
HIRL Rwy 8-26 and 17-35



CATEGORY	A	B	C	D
LPV DA		303/40	200 (200-¾)	
LNAV/VNAV DA		384/45	281 (300-⅞)	
LNAV MDA		480/55	377 (400-1)	
CIRCLING	580-1 459 (500-1)	680-1 559 (600-1)	860-2 739 (800-2)	860-2¼ 739 (800-2¼)

SE-3, 08 SEP 2022 to 06 OCT 2022

SE-3, 08 SEP 2022 to 06 OCT 2022