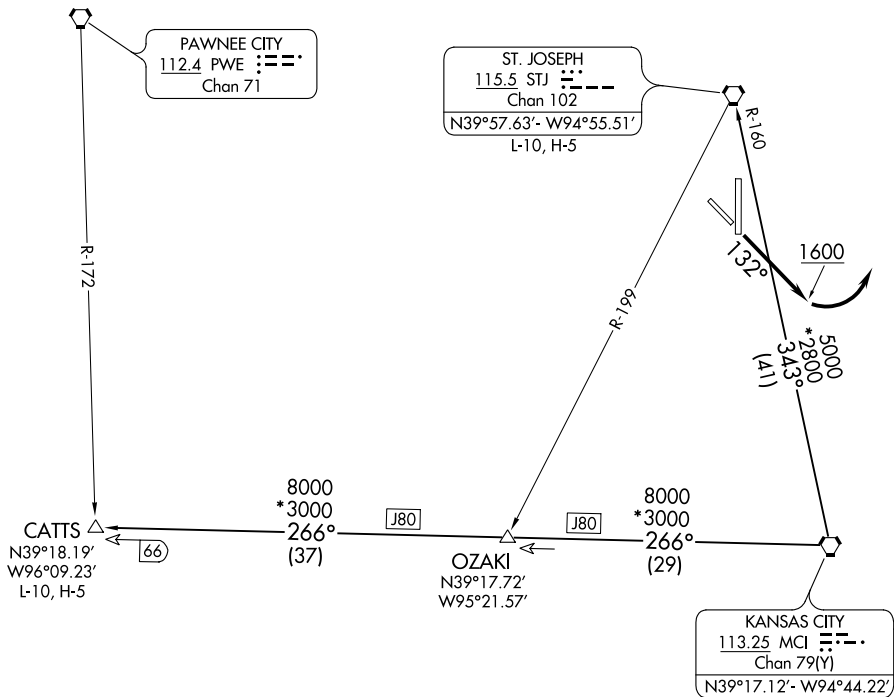


ATIS  
 125.05  
 ST. JOSEPH DEP CON★  
 120.35 360.8



NOTE: RADAR required.

**TAKEOFF MINIMUMS**

Rwys 13, 17, 35: Standard.  
 Rwy 31: 400-2¼ or standard with minimum climb of 340' per NM to 1300.

NOTE: Chart not to scale



**DEPARTURE ROUTE DESCRIPTION**

**TAKEOFF RUNWAY 13:** Climb heading 132° to 1600 before turning left, thence . . .  
 . . . climb on assigned heading for RADAR vectors to appropriate route. Expect filed altitude 10 minutes after departure.

**TAKEOFF ALL OTHER RUNWAYS:** Climb on assigned heading for RADAR vectors to appropriate route. Expect filed altitude 10 minutes after departure.

**CA TTS TRANSITION (CHIEF7.CATTS):** From over MCI VORTAC on MCI R-266 to CATTS INT.

**ST. JOSEPH TRANSITION (CHIEF7.STJ):** From over MCI VORTAC on MCI R-343 and STJ R-160 to STJ VORTAC.