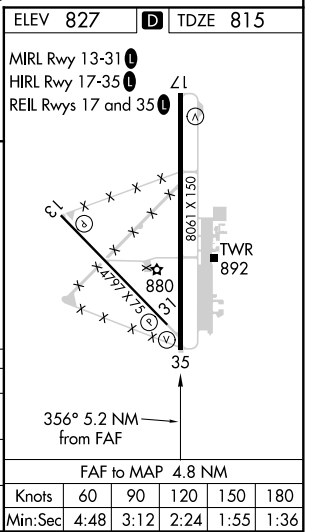
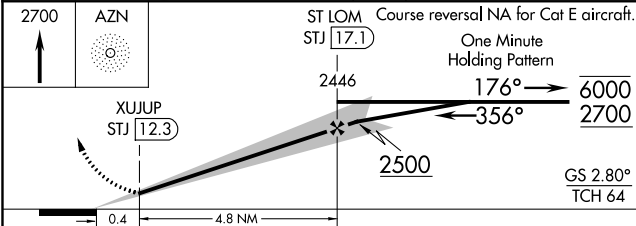
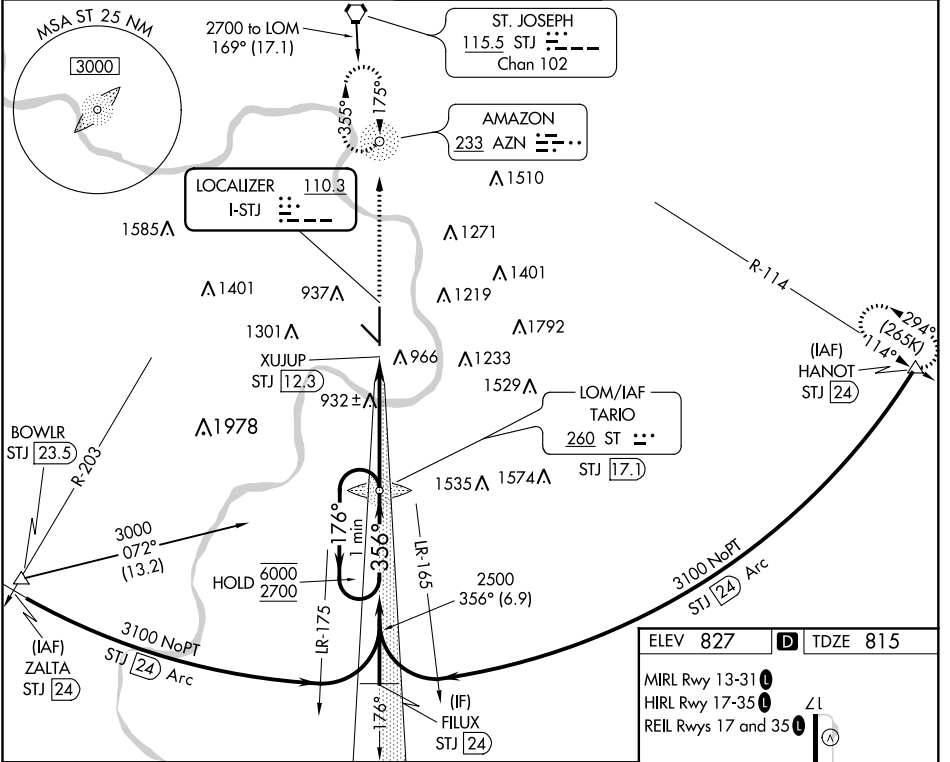


LOC I-STJ <b>110.3</b>	APP CRS <b>356°</b>	Rwy Idg TDZE Apt Elev	<b>8061</b> <b>815</b> <b>827</b>
---------------------------	------------------------	-----------------------------	---

**ILS or LOC RWY 35**  
ROSECRANS MEML (STJ)

ADF or TACAN required.		MISSED APPROACH: Climb to 2700 direct AZN NDB and hold. (TACAN aircraft climb to 2700 then climbing right turn to 3100 on STJ VORTAC R-114 to HANOT/24 DME and hold NW, LT, 114° inbound).				
DME from STJ VORTAC, simultaneous reception of I-STJ and STJ DME required. ASR/PAR		ATIS <b>125.05</b>	ST. JOSEPH APP CON ★ <b>120.35 360.8</b>	ST. JOSEPH TOWER ★ <b>126.9(CTAF) 239.0</b>	GND CON <b>121.9</b>	UNICOM <b>122.95</b>



NC-3, 08 SEP 2022 to 06 OCT 2022

NC-3, 08 SEP 2022 to 06 OCT 2022