

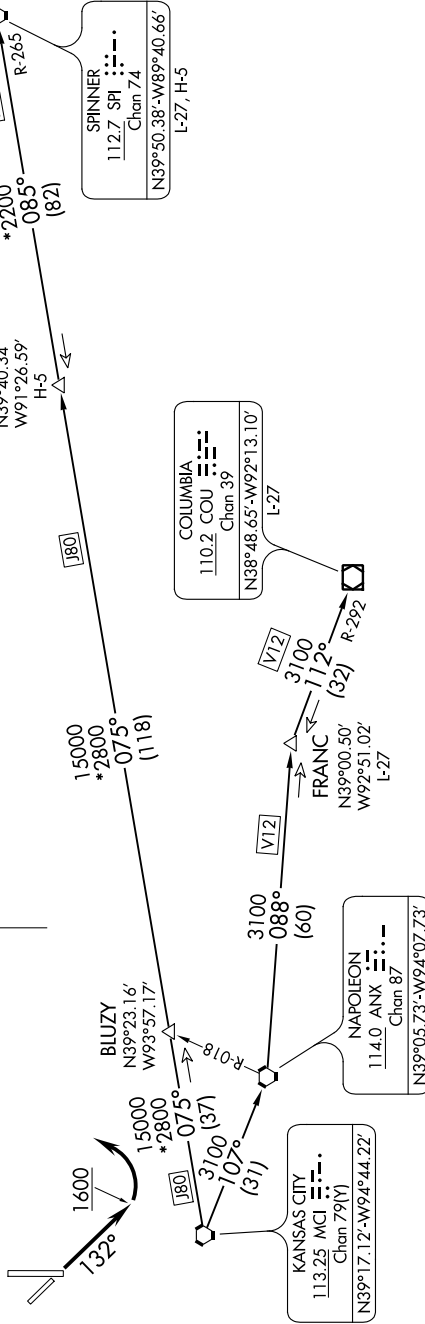
LAKES THREE DEPARTURE

AL-359 (FAA)

ROSECRANS MEML (STJ)
ST. JOSEPH, MISSOURI

NC-3, 08 SEP 2022 to 06 OCT 2022

ATIS 125.05
ST. JOSEPH DEP CON *
120.35 360.8



NOTE: RADAR required.
NOTE: DME required.

TAKEOFF MINIMUMS
Rwys 13, 17, 35: Standard.
Rwy 31: 400-2¼ or standard with minimum
climb of 340' per NM to 1300'.

(NARRATIVE ON FOLLOWING PAGE)

NOTE: Chart not to scale.

NC-3, 08 SEP 2022 to 06 OCT 2022