

VORTAC STJ 115.5 Chan 102	APP CRS 167°	Rwy Idg TDZE Apt Elev	8061 827 827
---	------------------------	-----------------------------	---

VOR or TACAN RWY 17

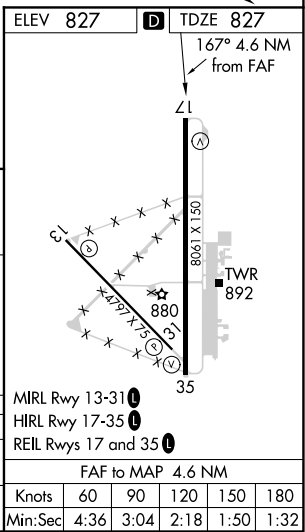
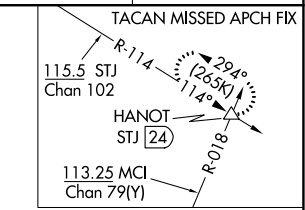
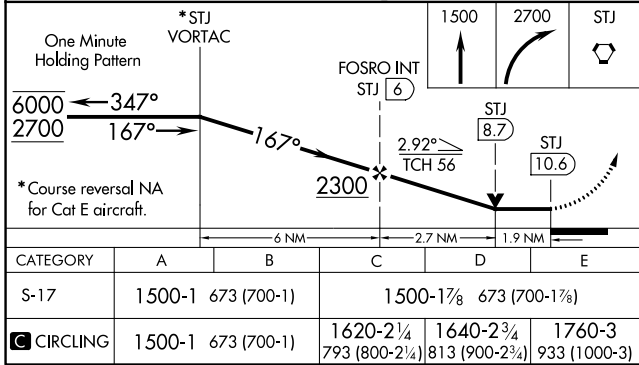
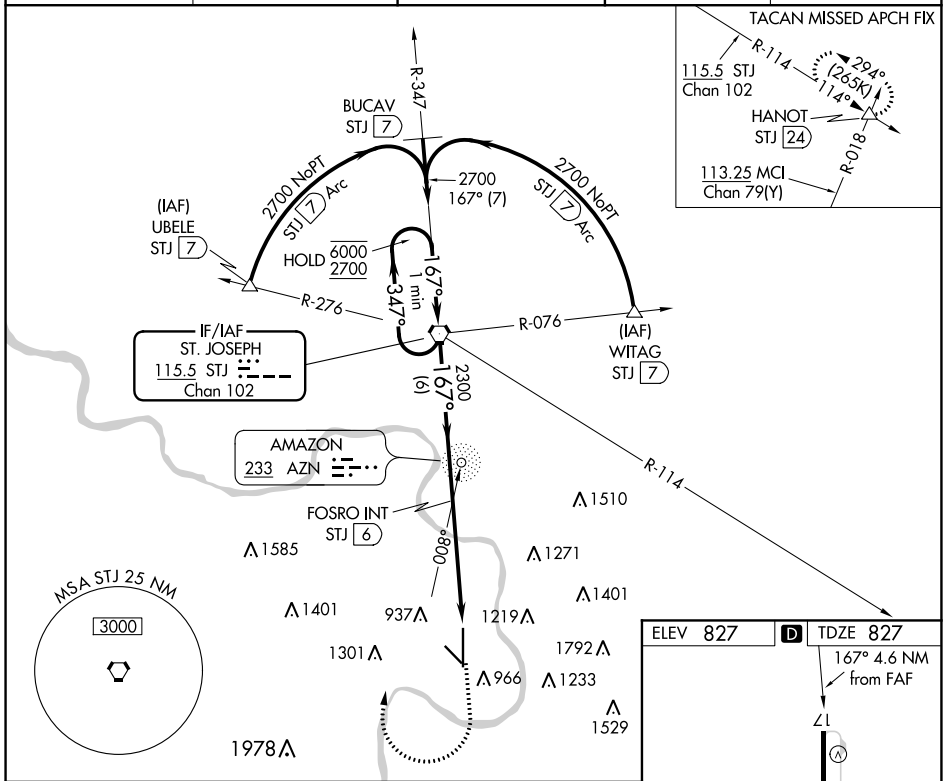
ROSECRANS MEML (STJ)

ADF or DME required.

▽
▲ Missed approach to STJ VORTAC NA for Cat E aircraft.
ASR/PAR

MISSED APPROACH: Climb to 1500 then climbing right turn to 2700 direct STJ VORTAC and hold. (TACAN aircraft climb to 2300 then climbing left turn to 3100 direct HANOT INT/STJ 24 DME and hold NW, LT, 114° inbound, GPS required).

ATIS 125.05	ST. JOSEPH APP CON * 120.35 360.8	ST. JOSEPH TOWER * 126.9 (CTAF) 239.0	GND CON 121.9	UNICOM 122.95
-----------------------	---	---	-------------------------	-------------------------



NC-3, 08 SEP 2022 to 06 OCT 2022

NC-3, 08 SEP 2022 to 06 OCT 2022