

STJ VORTAC <b>115.5</b> Chan <b>102</b>	APP CRS <b>348°</b>	Rwy Idg TDZE Apt Elev	<b>8061</b> <b>815</b> <b>827</b>
---	------------------------	-----------------------------	---

# VOR or TACAN RWY 35

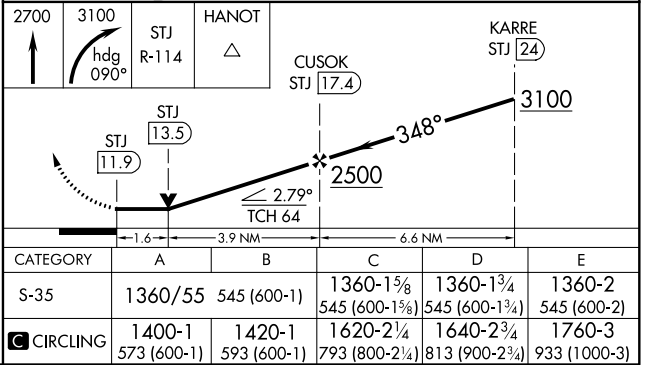
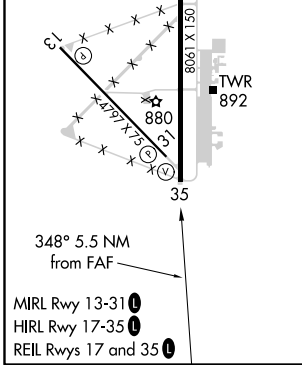
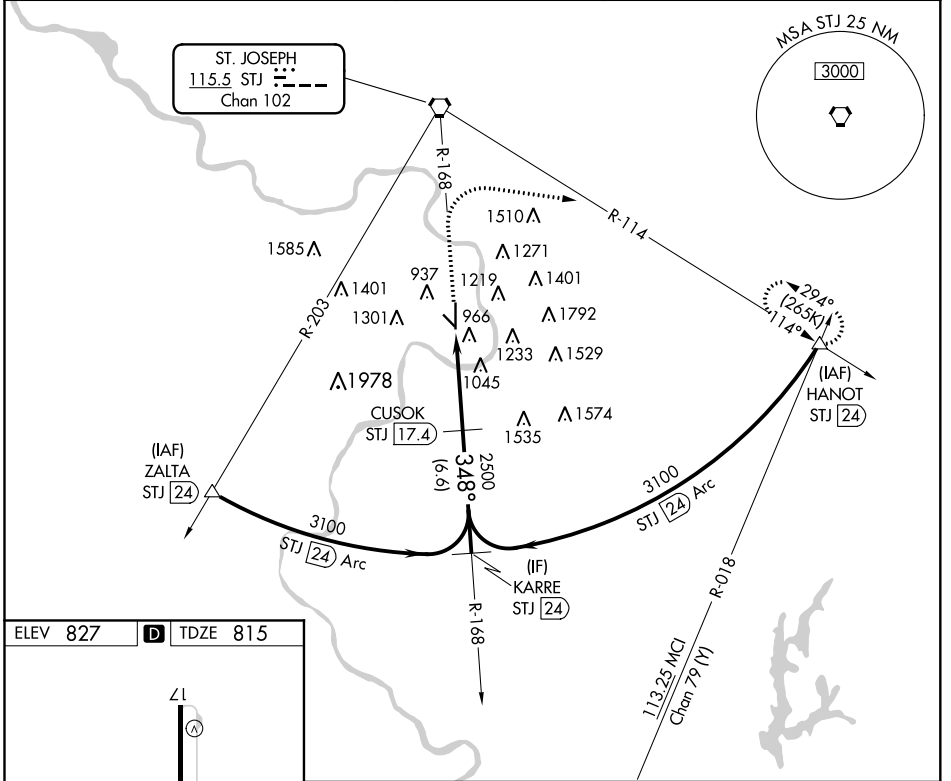
ROSECRANS MEML (STJ)

DME required.

ASR/PAR

MISSED APPROACH: Climb to 2700 then climbing right turn to 3100 on heading 090° and STJ VORTAC R-114 to HANOT/24 DME and hold.

ATIS <b>125.05</b>	ST. JOSEPH APP CON * <b>120.35 360.8</b>	ST. JOSEPH TOWER * <b>126.9 (CTAF) 239.0</b>	GND CON <b>121.9</b>	UNICOM <b>122.95</b>
-----------------------	---	---	-------------------------	-------------------------



NC-3, 08 SEP 2022 to 06 OCT 2022

NC-3, 08 SEP 2022 to 06 OCT 2022