

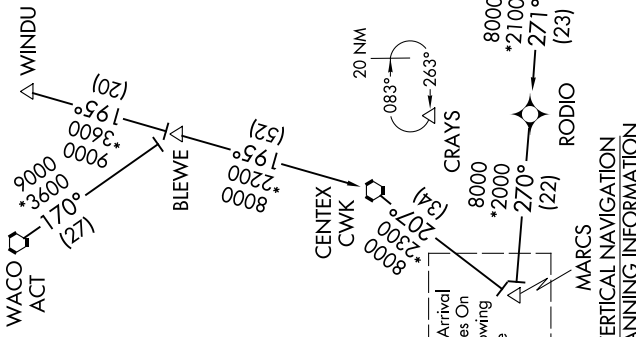
BRAUN THREE ARRIVAL (RNAV) Transition Routes

SAN ANTONIO, TEXAS

SC-3, 08 SEP 2022 to 06 OCT 2022

- HUMBLE TRANSITION (IAH.BRAUN3)
- LUFKIN TRANSITION (LFK.BRAUN3)
- MOLLR TRANSITION (MOLLR.BRAUN3)
- WACO TRANSITION (ACT.BRAUN3)
- WALLIN TRANSITION (WALLIN.BRAUN3)
- WINDU TRANSITION (WINDU.BRAUN3)

SAN ANTONIO APP CON
127.1 269.1
KRND ATIS *
290.525
SAT D-ATIS
118.9
SKF ATIS
120.45 273.5
SSF ATIS
128.8



NOTE: RADAR required.
NOTE: RNAV 1.
NOTE: DME/DME/IRU or GPS required.
NOTE: WALLIN transition for Houston Terminal Area Departures only.

See Arrival Routes On Following Page
MARC'S VERTICAL NAVIGATION PLANNING INFORMATION
Turbojets: Expect 13000

(CONTINUED ON FOLLOWING PAGE)

Turbojets: Expect 13000

NOTE: Chart not to scale

SC-3, 08 SEP 2022 to 06 OCT 2022

BRAUN THREE ARRIVAL (RNAV) Transition Routes

SAN ANTONIO, TEXAS