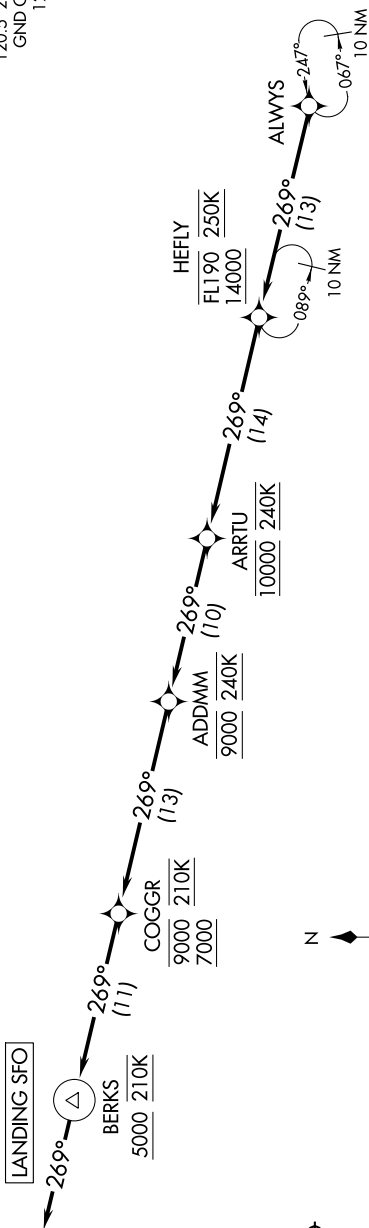


# ALWYS TWO ARRIVAL (RNAV) Arrival Routes

OAKLAND CENTER  
134.37 281.5  
NORCAL APP CON  
128.325 254.3  
D-ATIS  
113.7 115.8 118.85  
SAN FRANCISCO TOWER  
120.5 269.1  
GND CON  
121.8



## ARRIVAL ROUTE DESCRIPTION

**LANDING RUNWAYS 19L/R:** From ALWAYS on track 269° to cross HEFLY between 14000 and FL190 and at 250K, then on track 269° to cross ARRTU at 10000 and at 240K, then on track 269° to cross ADDMM at 9000 and at 240K, then on track 269° to cross COGGR between 7000 and 9000 and at 210K, then on track 269° to cross BERKS at or above 5000 and at 210K, then on track 269°. Expect ILS or RNAV (GPS) approach to Rwy 19L or RADAR vectors to final approach course.

- NOTE: RADAR required.
- NOTE: RNAV 1.
- NOTE: DME/DME/IRU or GPS required.
- NOTE: Expect "descend via" clearance from Oakland Center. Northern California TRACON will assign landing runway.

NOTE: Chart not to scale.

# ALWYS TWO ARRIVAL (RNAV) Arrival Routes