

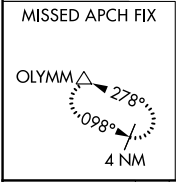
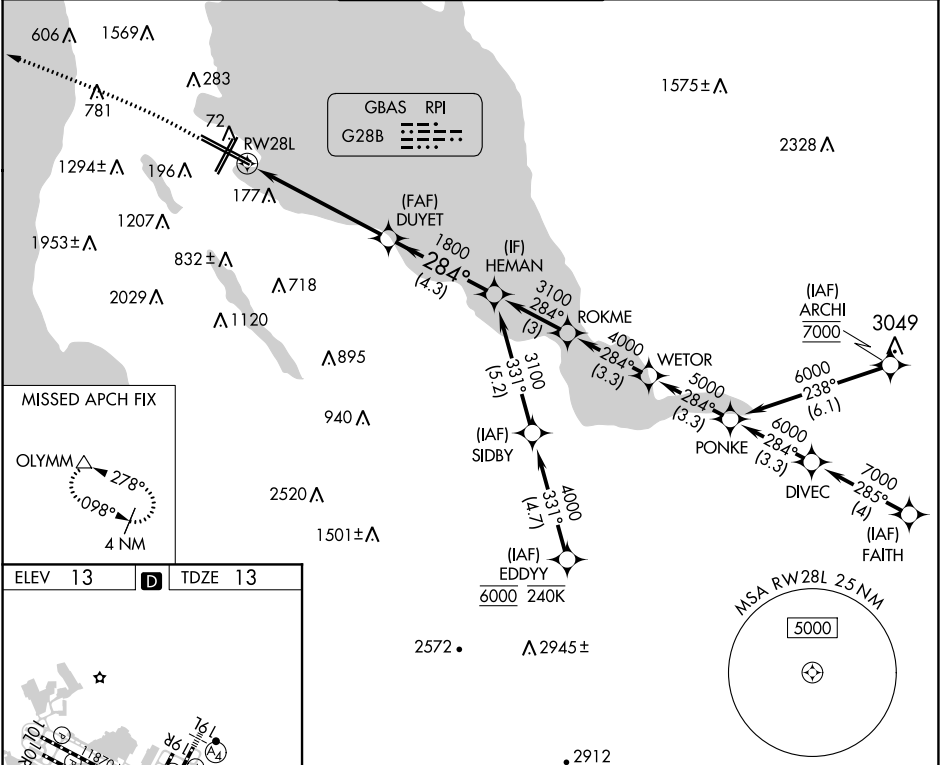
GBAS CH 21037 G28B	APP CRS 284°	Rwy Idg 10275 TDZE 13 Apt Elev 13
--	------------------------	--

GLS RWY 28L

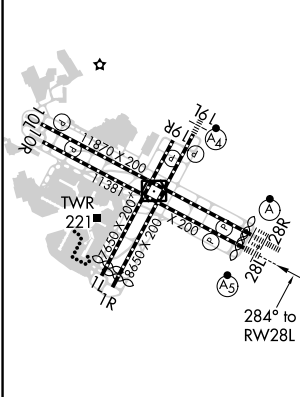
SAN FRANCISCO INTL (SFO)

RNP APCH-GPS.		MALSR 	MISSED APPROACH: Climb to 1020 then climbing left turn to 4000 direct OLYMM and hold. *MISSED approach requires minimum climb of 330 feet per NM to 1600; if unable to meet climb gradient, see RNAV (GPS) Rwy 28L.		
Simultaneous approach authorized. Simultaneous operations require use of vertical guidance; maintain last assigned altitude until established on glidepath. Use of FD or AP required during simultaneous operations. Autopilot coupled approach NA below 213. *RVR 1800 authorized with use of FD or AP or HUD to DA.					

D-ATIS 113.7 115.8 118.85	NORCAL APP CON 134.5 338.2	SAN FRANCISCO TOWER 120.5 269.1	GND CON 121.8	CLNC DEL 118.2	CPDLC
---	--------------------------------------	---	-------------------------	--------------------------	-------



ELEV 13	D	TDZE 13
---------	----------	---------



HIRL all Rwys
 TDZ/CL Rwys 19L and 28R
 REIL Rwys 1L, 1R and 10L

1020	4000	OLYMM	VGSi and GLS glidepath not coincident (VGSi Angle 2.85/TCH 67).	
HEMAN 3100				
DUYET 1800				
RWY 28L				
5.7 NM		4.3 NM		
GP 2.85° TCH 53				
CATEGORY	A	B	C	D
GLS DA*	213/24		200 (200-1/2)	

SW-2, 08 SEP 2022 to 06 OCT 2022

SW-2, 08 SEP 2022 to 06 OCT 2022