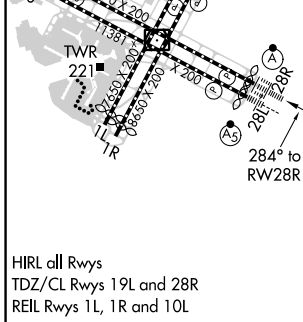
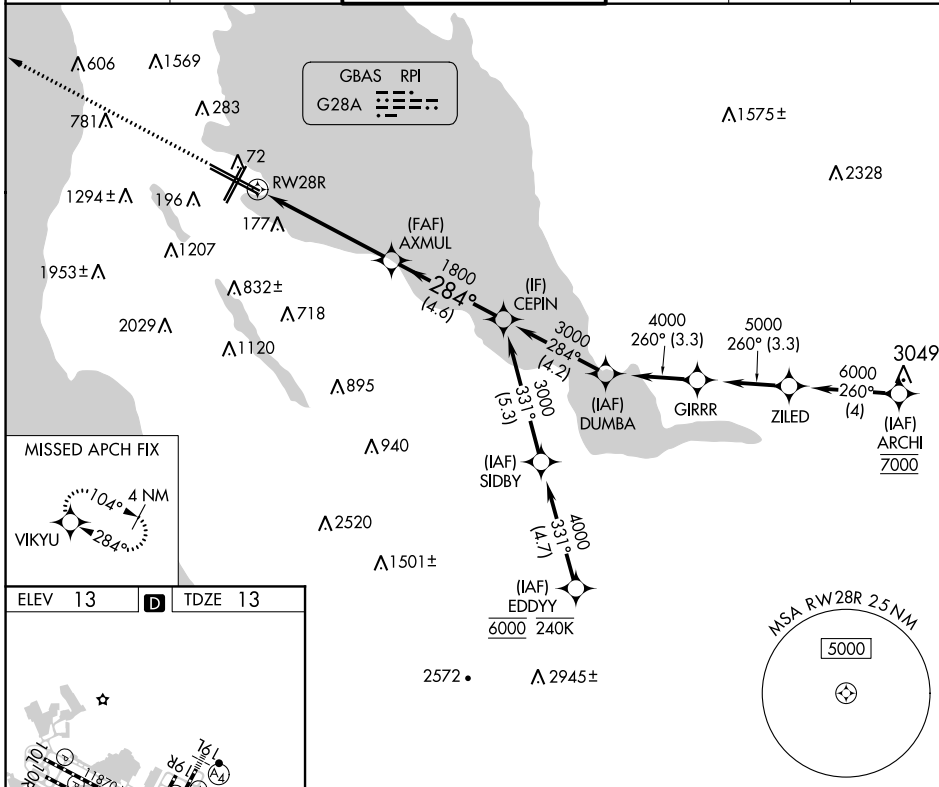


GBAS CH 20626 G28A	APP CRS 284°	Rwy Idg 11236 TDZE 13 Apt Elev 13
--	------------------------	--

GLS RWY 28R

SAN FRANCISCO INTL (SFO)

RNP APCH-GPS. ⚠ NA Simultaneous approach authorized. Simultaneous operations require use of vertical guidance; maintain last assigned altitude until established on glidepath. Use of FD or AP required during simultaneous operations. Autopilot coupled approach NA below 213 feet.		ALSF-2 	MISSED APPROACH: Climb to 3200 direct VIKYU and hold. *Missed approach requires minimum climb of 350 feet per NM to 1900; if unable to meet climb gradient, see RNAV (GPS) Z RWY 28R.		
D-ATIS 113.7 115.8 118.85	NORCAL APP CON 134.5 338.2	SAN FRANCISCO TOWER 120.5 269.1	GND CON 121.8	CLNC DEL 118.2	CPDLC



3200	VIKYU	VGSI and GLS glidepath not coincident (VGSI Angle 3.00/TCH 68).		CEPIN
		AXMUL		
		1800	284°	3000
		RW28R		GP 3.00° TCH 55
		5.4 NM	4.6 NM	
CATEGORY	A	B	C	D
GLS DA*	213/18 200 (200-1/2)			

SW-2, 08 SEP 2022 to 06 OCT 2022

SW-2, 08 SEP 2022 to 06 OCT 2022