

LOC/DME I-SFO 109.55 Chan 32(Y)	APP CRS 284°	Rwy Idg 10275 TDZE 13 Apt Elev 13
---	------------------------	--

ILS RWY 28L (SA CAT II)

SAN FRANCISCO INTL (SFO)

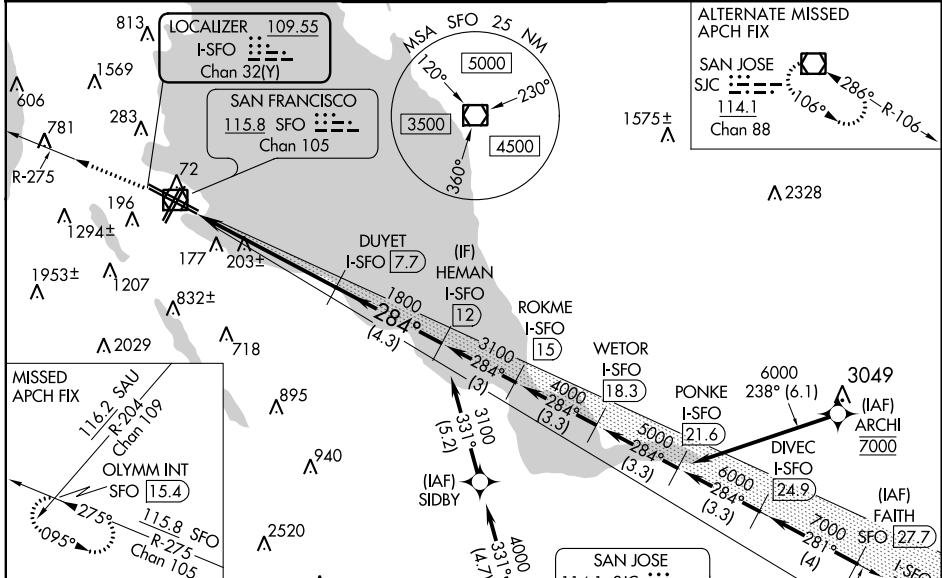
DME required. RNP APCH-GPS or RADAR required for procedure entry.

Requires specific OPSPEC, MSPEC, or LOA approval.

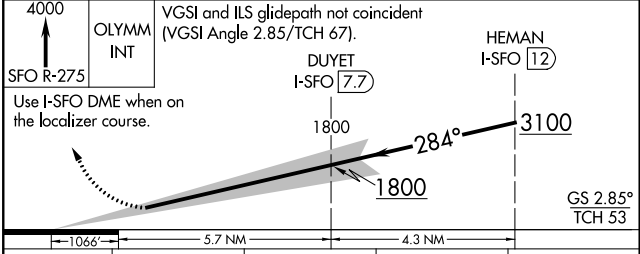
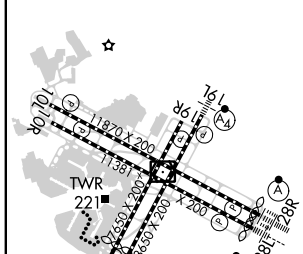
MALSRL

MISSED APPROACH: Climb to 4000 on SFO VOR/DME R-275 to OLYMM INT/SFO 15.4 DME and hold, continue climb-in-hold to 4000.
*Misted approach requires minimum climb of 330 feet per NM to 1600.

D-ATIS 113.7 115.8 118.85	NORCAL APP CON 134.5 338.2	SAN FRANCISCO TOWER 120.5 269.1	GND CON 121.8	CLNC DEL 118.2	CPDLC
-------------------------------------	--------------------------------------	---	-------------------------	--------------------------	-------



ELEV 13	D	TDZE 13
HIRL All Rwys		
TDZ/CL Rwys 19L and 28R		
REIL Rwys 1L, 1R and 10L		



CATEGORY	A	B	C	D
S-ILS 28L*	RA 113/12 100 DA 113			

SA CAT II ILS - SPECIAL AIRCREW AND AIRCRAFT CERTIFICATION REQUIRED

SW-2, 08 SEP 2022 to 06 OCT 2022

SW-2, 08 SEP 2022 to 06 OCT 2022