

APP CRS 104°	Rwy Idg 11193
	TDZE 7
	Apt Elev 13

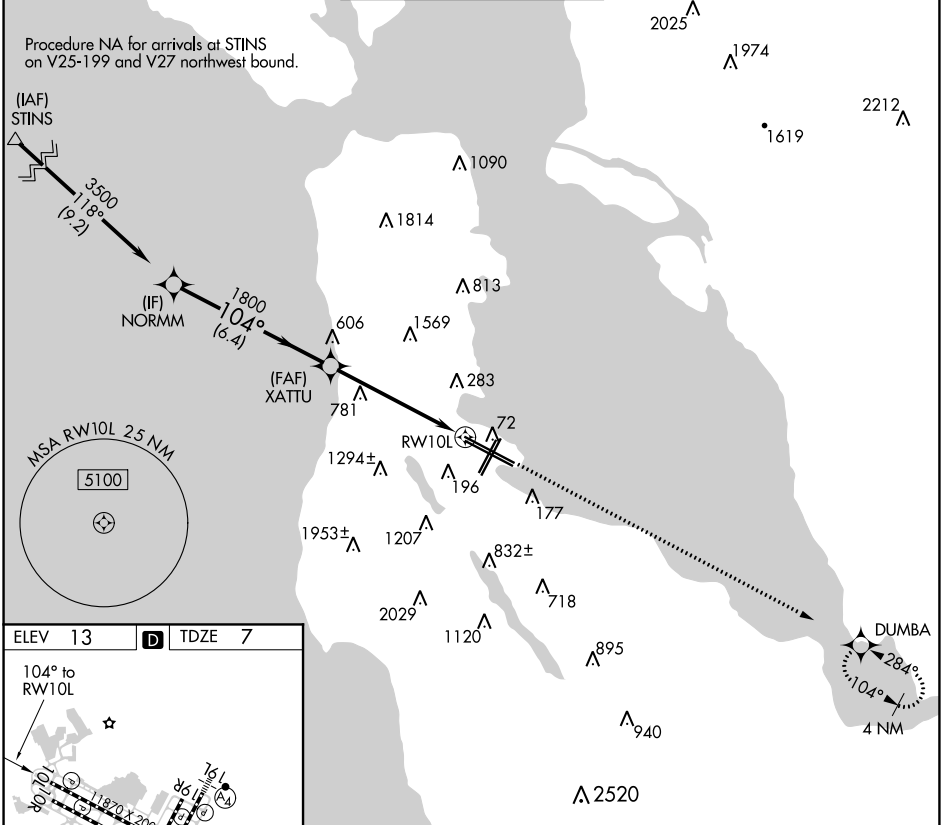
RNAV (GPS) RWY 10L

SAN FRANCISCO INTL (SFO)

▽ DME/DME RNP-0.3 NA.
▲ Helicopter visibility reduction below RVR 4000 NA.

MISSED APPROACH: Climb to 4000 direct DUMBA and hold.

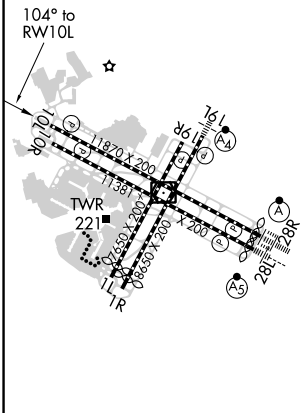
D-ATIS 113.7 115.8 118.85	NORCAL APP CON 134.5 338.2	SAN FRANCISCO TOWER 120.5 269.1	GND CON 121.8	CLNC DEL 118.2	CPDLC
---	--------------------------------------	---	-------------------------	--------------------------	-------



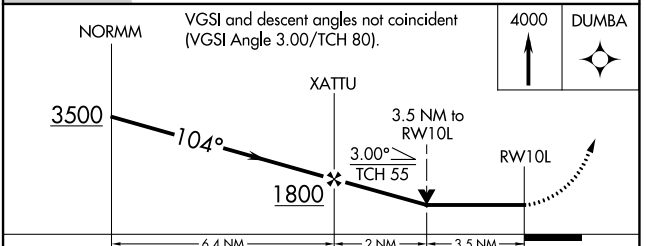
SW-2, 08 SEP 2022 to 06 OCT 2022

SW-2, 08 SEP 2022 to 06 OCT 2022

ELEV 13	D	TDZE 7
---------	----------	--------



TDZ/CL Rwy 19L and 28R
 REIL Rwy 1L, 1R, and 10L
 HIRL all Rwy



CATEGORY	A	B	C	D
LNAV MDA	1200/60 1193 (1200-1¼)	1200-1½ 1193 (1200-1½)	1200-3	1193 (1200-3)