

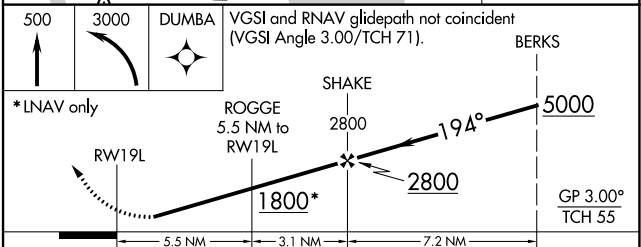
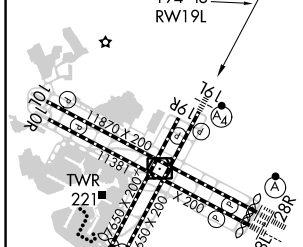
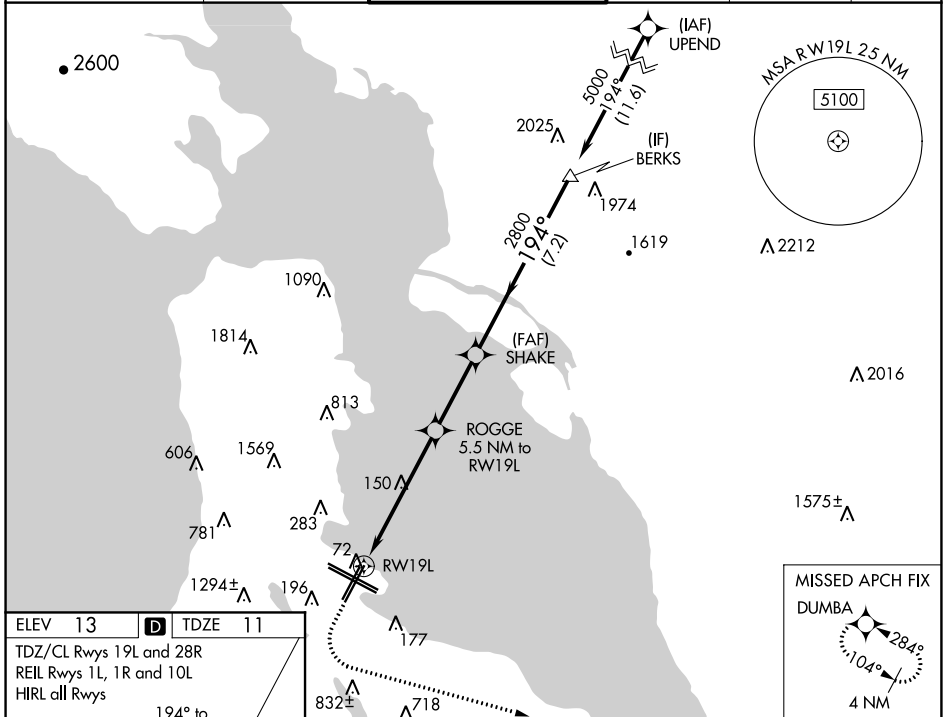
WAAS CH 58015 W19A	APP CRS 194°	Rwy Idg 8650 TDZE 11 Apt Elev 13
--	------------------------	---

RNAV (GPS) RWY 19L

SAN FRANCISCO INTL (SFO)

RNP APCH.	MALSF	MISSED APPROACH: Climb to 500 then climbing left turn to 3000 direct DUMBA and hold.
<p>▼ Helicopter visibility reduction below 1 SM NA. For uncompensated Baro-VNAV systems, LNAV/VNAV NA below 3°C or above 54°C. For inop ALS, increase LPV Cat A/B visibility to RVR 4500, LNAV/VNAV all Cats visibility to RVR 6000 and LNAV Cat A/B to RVR 5500. Inop table does not apply to LPV Cat C/D.</p>		

D-ATIS 113.7 115.8 118.85	NORCAL APP CON 134.5 338.2	SAN FRANCISCO TOWER 120.5 269.1	GND CON 121.8	CLNC DEL 118.2	CPDLC
-------------------------------------	--------------------------------------	---	-------------------------	--------------------------	-------



CATEGORY		A	B	C	D
LPV	DA	293/40	282 (300-¾)	293/50	282 (300-1)
LNAV/VNAV	DA	350/40	339 (400-¾)	350/50	339 (400-1)
LNAV	MDA	560/40	549 (600-¾)	560-1⅓	549 (600-1⅓)

SW-2, 08 SEP 2022 to 06 OCT 2022

SW-2, 08 SEP 2022 to 06 OCT 2022