

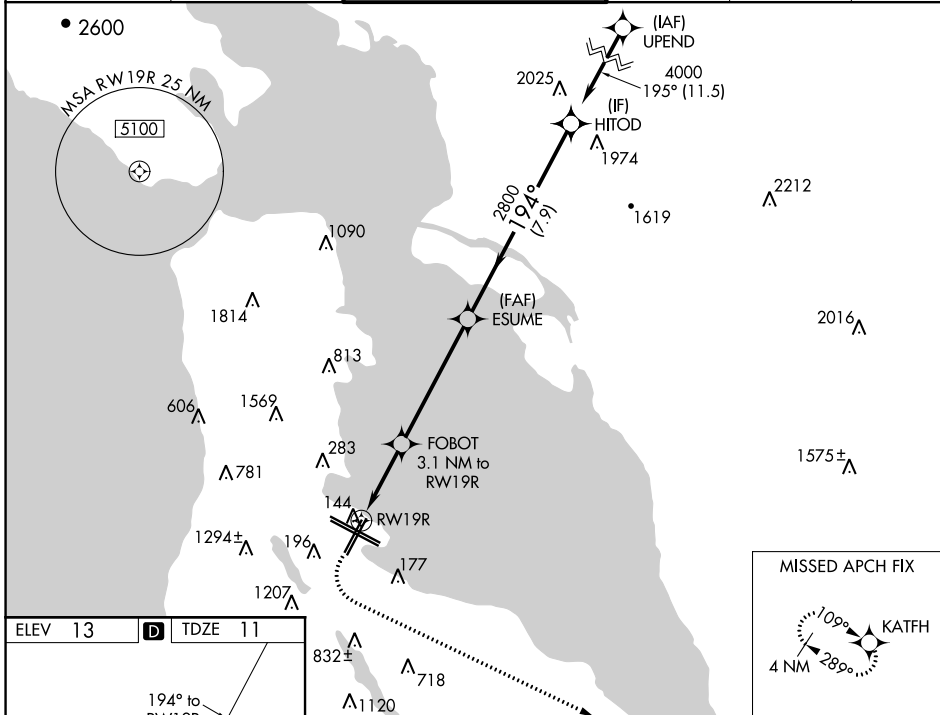
WAAS CH 53533 W19B	APP CRS 194°	Rwy Idg TDZE 11 Apt Elev 13	7650
--	------------------------	---	-------------

RNAV (GPS) RWY 19R

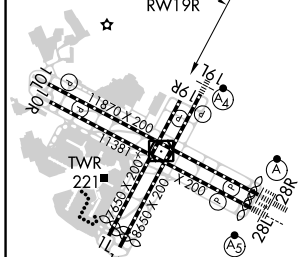
SAN FRANCISCO INTL (SFO)

RNP APCH.	<p>▼ LNAV procedure NA during simultaneous operations. For uncompensated Baro-VNAV systems, LNAV/VNAV NA below 3°C or above 42°C. Simultaneous approach authorized. Simultaneous operations require use of vertical guidance; maintain last assigned altitude until established on glidepath. Simultaneous approach NA below 28°C (52°F).</p>	<p>MISSED APPROACH: Climb to 600 then climbing left turn to 3000 direct KATFH and hold.</p>
-----------	---	---

D-ATIS 113.7 115.8 118.85	NORCAL APP CON 134.5 338.2	SAN FRANCISCO TOWER 120.5 269.1	GND CON 121.8	CLNC DEL 118.2	CPDLC
---	--------------------------------------	---	-------------------------	--------------------------	-------



ELEV 13	D	TDZE 11
---------	----------	---------



600	3000	KATFH	HITOD
*LNAV only.		FOBOT 3.1 NM to RWY 19R	ESUME 2800
1.9 NM to RWY 19R		1100	4000
RWY 19R		ESUME	HITOD
1.9 NM		1.2 NM	5.1 NM
		7.9 NM	
			GP 3.15° TCH 55

CATEGORY	A	B	C	D
LPV DA	382/55 371 (400-1)			
LNAV/VNAV DA	449-1¼ 438 (500-1¼)			
LNAV MDA	660/55	649 (700-1)	660-1⅞	649 (700-1⅞)

TDZ/CL Rwy 19L and 28R
REIL Rwy 1L, 1R and 10L
HIRL all Rwy

SW-2, 08 SEP 2022 to 06 OCT 2022

SW-2, 08 SEP 2022 to 06 OCT 2022