

|  |                        |  |
|--|------------------------|--|
| WAAS<br>CH <b>53415</b><br><b>W28B</b> | APP CRS<br><b>284°</b> | Rwy Idg <b>10275</b><br>TDZE <b>13</b><br>Apt Elev <b>13</b> |
|--|------------------------|--|

# RNAV (GPS) RWY 28L

SAN FRANCISCO INTL (SFO)

RNP APCH.

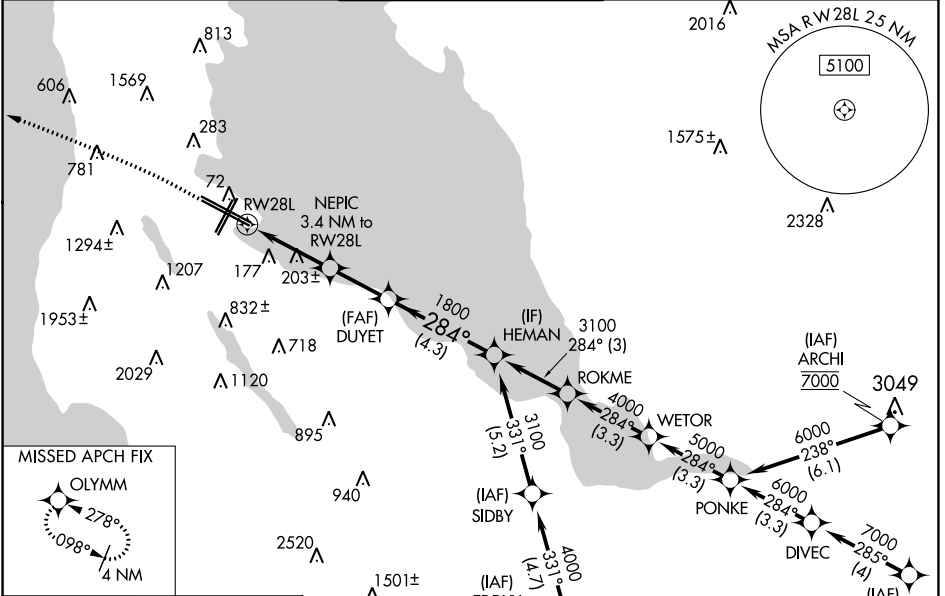
▼ For uncompensated Baro-VNAV systems, LNAV/VNAV NA below 3°C or above 54°C. For inop ALS, increase LPV † all Cats visibility to 2½ SM, increase LNAV/VNAV all Cats visibility to 2 SM. Circling NA to Rwy 10L, 10R, 19L, and 19R. Circling Rwy 1L, 1R NA at night.  
#RVR 1800 authorized with use of FD or AP or HUD to DA.

MALSR



MISSED APPROACH: Climb to 1020 then climbing left turn to 4000 direct OLYMM and hold, continue climb-in-hold to 4000. #Missed approach requires minimum climb of 330 feet per NM to 1600.

|   |                                      |   |                         |                          |       |
|---|--------------------------------------|---|-------------------------|--------------------------|-------|
| D-ATIS<br><b>113.7 115.8</b><br><b>118.85</b> | NORCAL APP CON<br><b>134.5 338.2</b> | SAN FRANCISCO TOWER<br><b>120.5 269.1</b> | GND CON<br><b>121.8</b> | CLNC DEL<br><b>118.2</b> | CPDLC |
|---|--------------------------------------|---|-------------------------|--------------------------|-------|

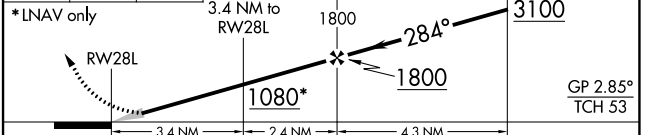
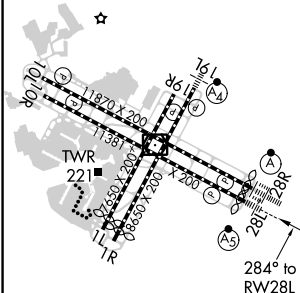


SW-2, 08 SEP 2022 to 06 OCT 2022

SW-2, 08 SEP 2022 to 06 OCT 2022

|         |          |         |
|---------|----------|---------|
| ELEV 13 | <b>D</b> | TDZE 13 |
|---------|----------|---------|

1020 4000 OLYMM VGSI and RNAV glidepath not coincident (VGSI Angle 2.85/TCH 67). HEMAN



| CATEGORY          | A                         | B                         | C                       | D              |
|-------------------|---------------------------|---------------------------|-------------------------|----------------|
| LPV DA#           |                           | 213/24                    | 200 (200-½)             |                |
| LPV DA †          |                           | 798-1¾                    | 785 (800-1¾)            |                |
| LNAV/VNAV DA      |                           | 770-1¾                    | 757 (800-1¾)            |                |
| LNAV MDA          | 1020/40<br>1007 (1100-¾)  | 1020/55<br>1007 (1100-1)  | 1020-2½                 | 1007 (1100-2½) |
| <b>C</b> CIRCLING | 1020-1¼<br>1007 (1100-1¼) | 1020-1½<br>1007 (1100-1½) | 1560-3<br>1547 (1600-3) | NA             |

HIRL all Rwys  
TDZ/CL Rwys 19L and 28R  
REL Rwys 1L, 1R and 10L