

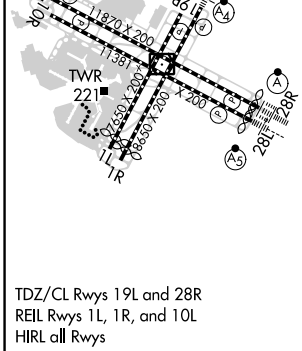
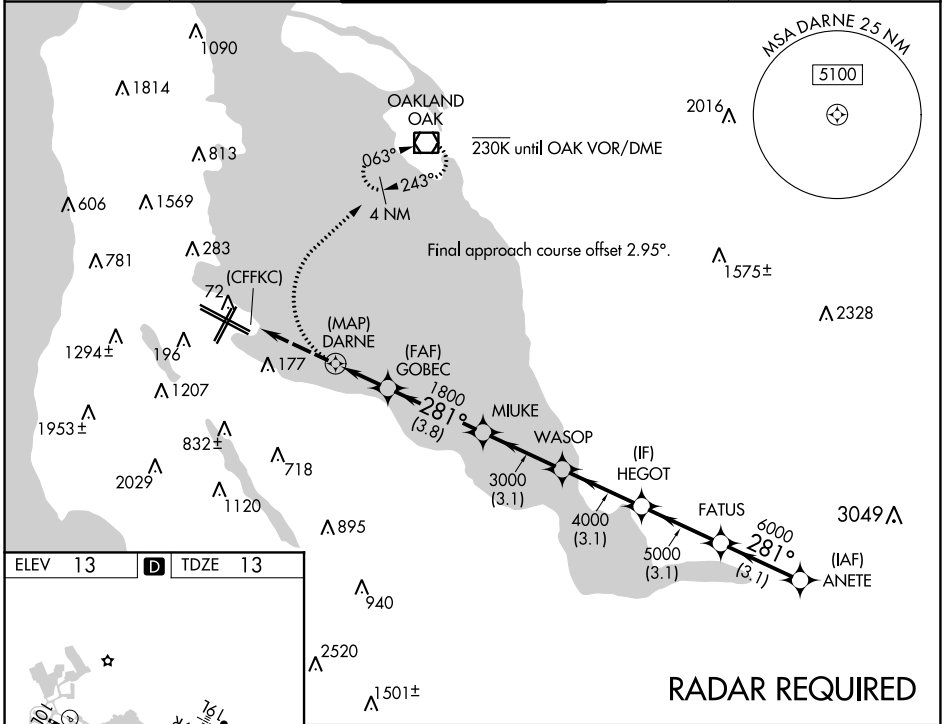
| | | |
|-------------|----------|--------------|
| APP CRS | Rwy Idg | 11236 |
| 281° | TDZE | 13 |
| | Apt Elev | 13 |

RNAV (GPS) X RWY 28R

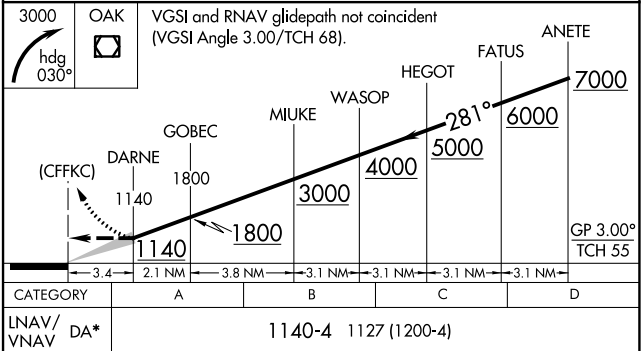
SAN FRANCISCO INTL (SFO)

| | |
|--|---|
| <p>NA Runway 28L and 28R separated by 750 feet centerline to centerline. DME/DME RNP-0.3 NA. When executing a missed approach or go-around, unless otherwise instructed by ATC, initially turn right to 030° utilizing heading mode. Inoperative table does not apply. For uncompensated Baro-VNAV systems, LNAV/VNAV NA below 2°C (36°F) or above 54°C (130°F). *If a go-around executed after passing DARNE, go-around requires a minimum climb of 380 feet per NM to 1800.</p> | <p>ALSF-2</p> <p>MISSED APPROACH: Climbing right turn to 3000 on heading 030° then direct OAK VOR/DME and hold.</p> |
|--|---|

| | | | | | |
|-------------------------------------|--------------------------------------|---|-------------------------|--------------------------|-------|
| D-ATIS 113.7 115.8 118.85 | NORCAL APP CON 134.5 338.2 | SAN FRANCISCO TOWER 120.5 269.1 | GND CON 121.8 | CLNC DEL 118.2 | CPDLC |
|-------------------------------------|--------------------------------------|---|-------------------------|--------------------------|-------|



TDZ/CL Rws 19L and 28R
REIL Rws 1L, 1R, and 10L
HIRL all Rws



SW-2, 08 SEP 2022 to 06 OCT 2022

SW-2, 08 SEP 2022 to 06 OCT 2022