

(SSTIK5.SSTIK) 21224

# SSTIK FIVE DEPARTURE (RNAV)

SAN FRANCISCO INTL (SFO)  
SAN FRANCISCO, CALIFORNIA

AL-375 (FAA)

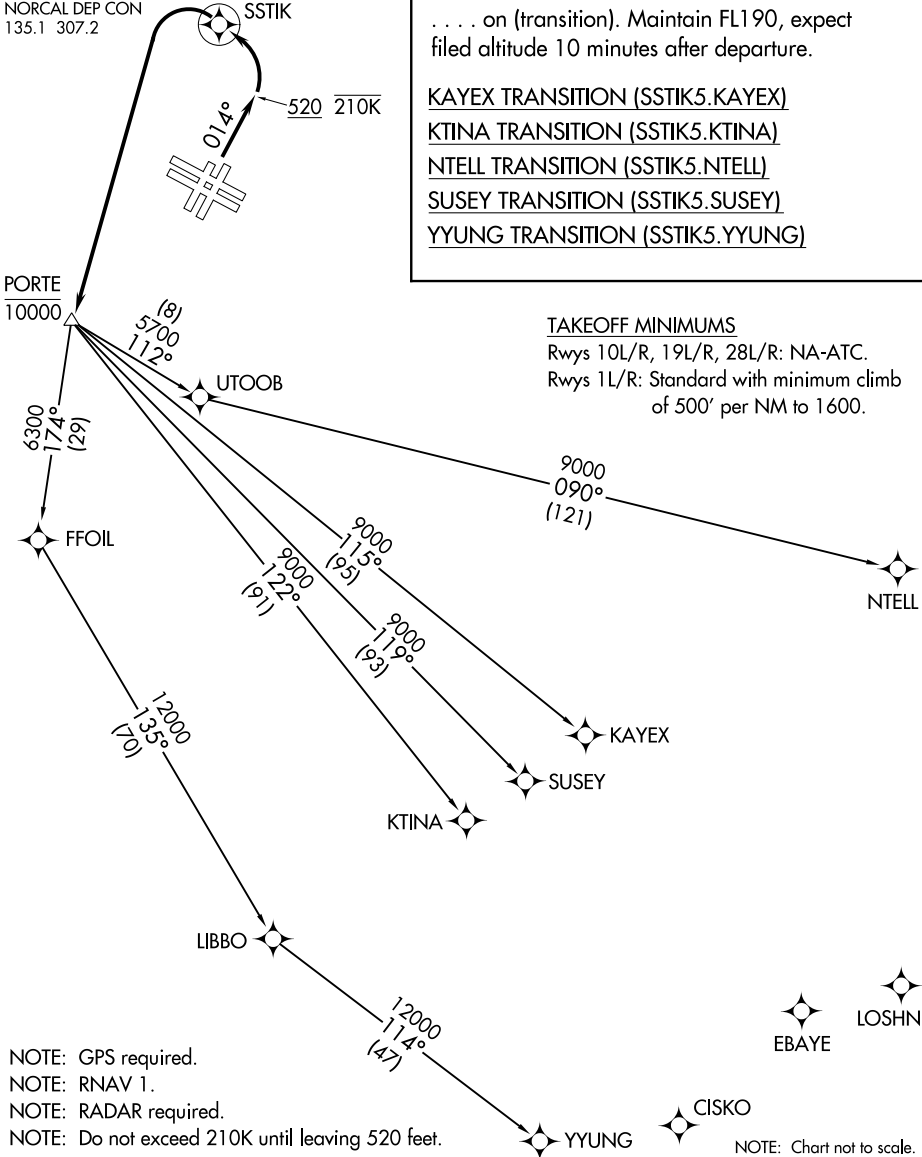
D-ATIS  
113.7 115.8 118.85  
CLNC DEL  
118.2  
CPDLC  
GND CON  
121.8  
SAN FRANCISCO TOWER  
120.5 269.1  
NORCAL DEP CON  
135.1 307.2

**TOP ALTITUDE:  
FL190**

## DEPARTURE ROUTE DESCRIPTION

**TAKEOFF RUNWAYS 1L/R:** Climb on heading 014° to 520 and at or below 210K, then climbing left turn direct SSTIK, then climbing left turn direct to cross PORTE at or below 10000. Thence. . . . on (transition). Maintain FL190, expect filed altitude 10 minutes after departure.

- KAYEX TRANSITION (SSTIK5.KAYEX)
- KTINA TRANSITION (SSTIK5.KTINA)
- NTELL TRANSITION (SSTIK5.NTELL)
- SUSEY TRANSITION (SSTIK5.SUSEY)
- YYUNG TRANSITION (SSTIK5.YYUNG)



### TAKEOFF MINIMUMS

Rwys 10L/R, 19L/R, 28L/R: NA-ATC.  
Rwys 1L/R: Standard with minimum climb of 500' per NM to 1600.

- NOTE: GPS required.
- NOTE: RNAV 1.
- NOTE: RADAR required.
- NOTE: Do not exceed 210K until leaving 520 feet.

NOTE: Chart not to scale.

# SSTIK FIVE DEPARTURE (RNAV)

(SSTIK5.SSTIK) 12AUG21

SAN FRANCISCO, CALIFORNIA  
SAN FRANCISCO INTL (SFO)

SW-2, 08 SEP 2022 to 06 OCT 2022

SW-2, 08 SEP 2022 to 06 OCT 2022