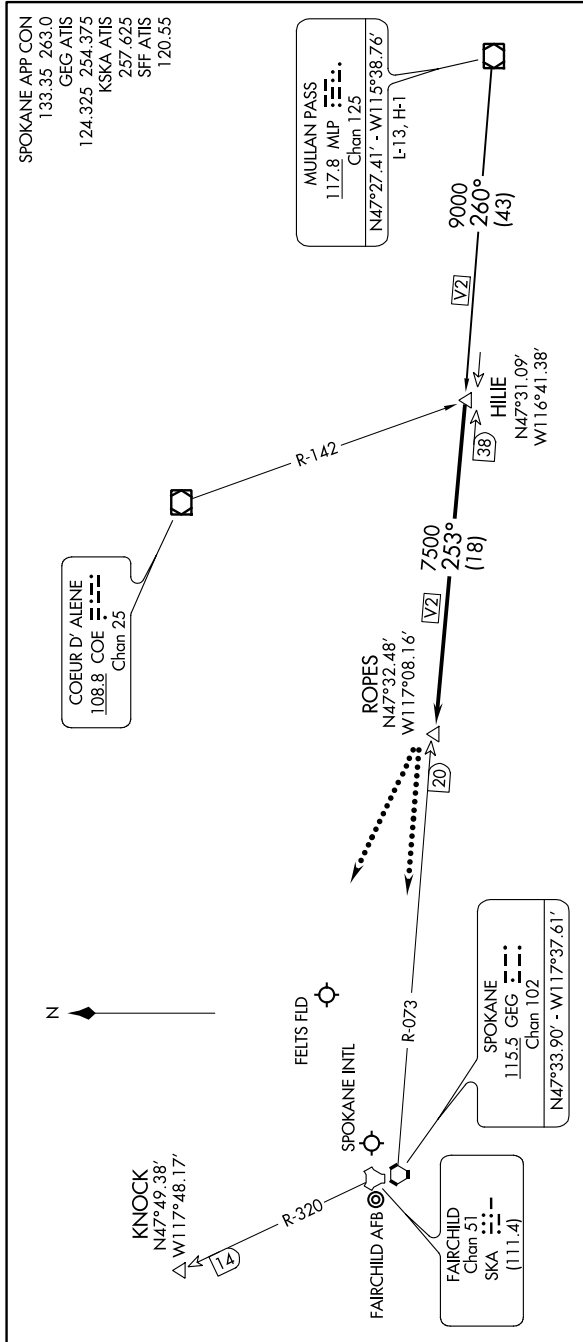


NW-1, 08 SEP 2022 to 06 OCT 2022



ARRIVAL ROUTE DESCRIPTION

MULLAN PASS TRANSITION [MLP.HILIE2]: From over MLP VOR/DME via MLP R-260 to HILIE INT. Thence. . . .

. . . . From over HILIE INT via GEG R-073 to ROPES. Expect radar vectors to final approach course.

LOST COMMUNICATIONS: After ROPES:
 Landing Spokane Intl or Felts Fld: Proceed to GEG VORTAC via GEG R-073, maintain last assigned altitude to GEG.
 Landing Fairchild AFB: Proceed to KNOCK via direct, maintain last assigned altitude to KNOCK.

NOTE: DME and RADAR required.
 NOTE: Chart not to scale.

NW-1, 08 SEP 2022 to 06 OCT 2022