

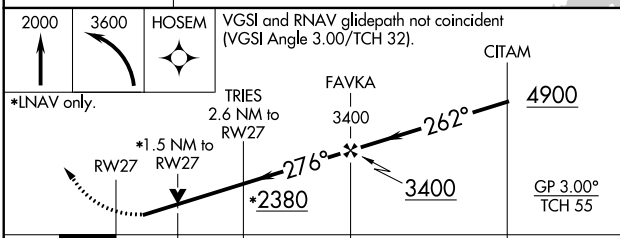
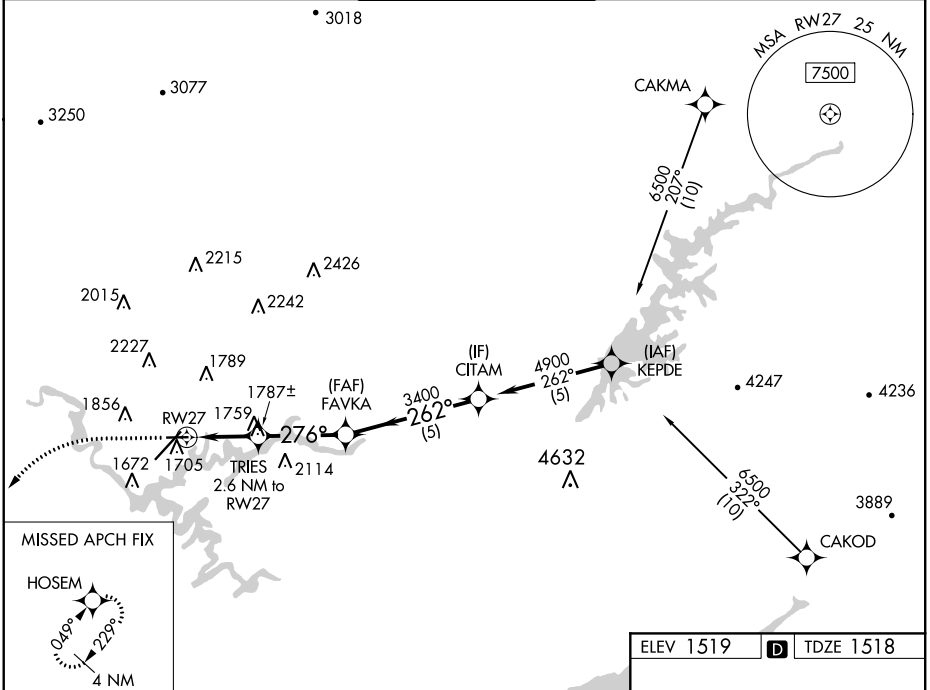
WAAS CH 63140 W27A	APP CRS 276°	Rwy Idg TDZE 1518 Apt Elev 1519	4056
--	------------------------	---	-------------

RNAV (GPS) RWY 27

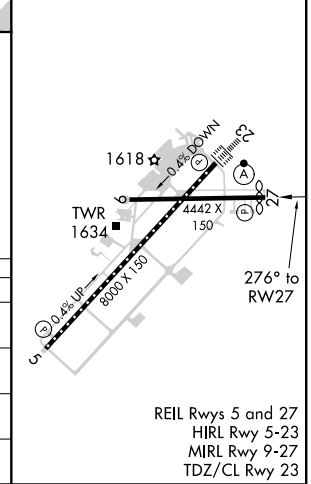
TRI-CITIES (TRI)

RNP APCH.	MISSED APPROACH: Climb to 2000 then climbing left turn to 3600 direct HOSEM and hold.
-----------	---

ATIS 118.25	TRI-CITY APP CON * 134.425 349.0	TRI-CITY TOWER * 119.5 (CTAF) 257.8	GND CON 121.7 348.6	UNICOM 122.95
-----------------------	--	---	-------------------------------	-------------------------



ELEV 1519	D	TDZE 1518
-----------	----------	-----------



CATEGORY	A	B	C	D
LPV DA	1788-7/8		270 (300-7/8)	
LNAV/VNAV DA	2034-13/4		516 (600-13/4)	
LNAV MDA	2020-1		2020-13/8	
	502 (600-1)		502 (600-13/8)	
C CIRCLING	2120-1		2500-3	
	601 (700-1)		981 (1000-3)	

SE-1, 08 SEP 2022 to 06 OCT 2022

SE-1, 08 SEP 2022 to 06 OCT 2022

REIL Rwy 5 and 27
HIRL Rwy 5-23
MIRL Rwy 9-27
TDZ/CL Rwy 23