

(TAD1.TAD) 16259

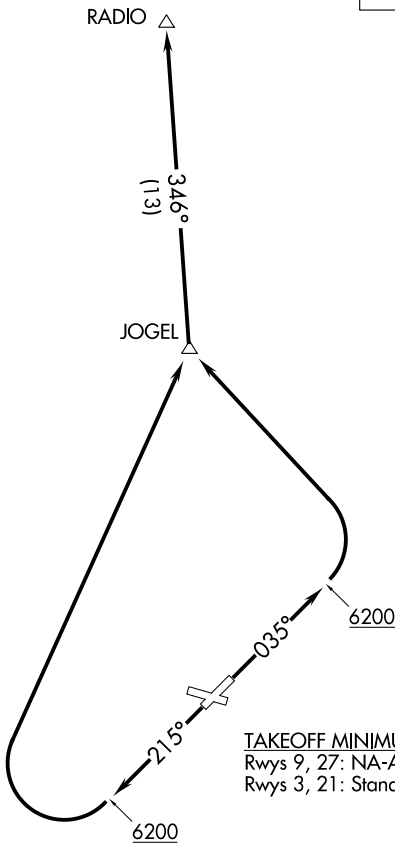
SL-427 (FAA)

PERRY STOKES (TAD)  
TRINIDAD, COLORADO

TRINIDAD ONE DEPARTURE (OBSTACLE) (RNAV)

DENVER CENTER  
128.375

**TOP ALTITUDE:  
ASSIGNED BY ATC**



PINON  
CANYON  
MOA

TAKEOFF MINIMUMS  
Rwys 9, 27: NA-ATC  
Rwys 3, 21: Standard

NOTE: GPS required.

NOTE: RNAV-1.

TAKEOFF OBSTACLE NOTES

Rwy 3: Multiple trees beginning 46' from DER, left and right of centerline, up to 15' AGL/5744' MSL.

NOTE: Chart not to scale.

DEPARTURE ROUTE DESCRIPTION

TAKEOFF RUNWAY 3: Climb heading 035° to 6200, then climbing left turn to 10000 direct JOGEL and on track 346° to RADIO.

TAKEOFF RUNWAY 21: Climb heading 215° to 6200, then climbing right turn to 10000 direct JOGEL and on track 346° to RADIO.

LOST COMMUNICATIONS:

If not in contact with Denver ARTCC at 10000 or assigned altitude if lower, continue climb to assigned altitude and thence on assigned route.

TRINIDAD ONE DEPARTURE (OBSTACLE) (RNAV)

(TAD1.TAD) 15SEP16

TRINIDAD, COLORADO  
PERRY STOKES (TAD)

SW-1, 08 SEP 2022 to 06 OCT 2022

SW-1, 08 SEP 2022 to 06 OCT 2022