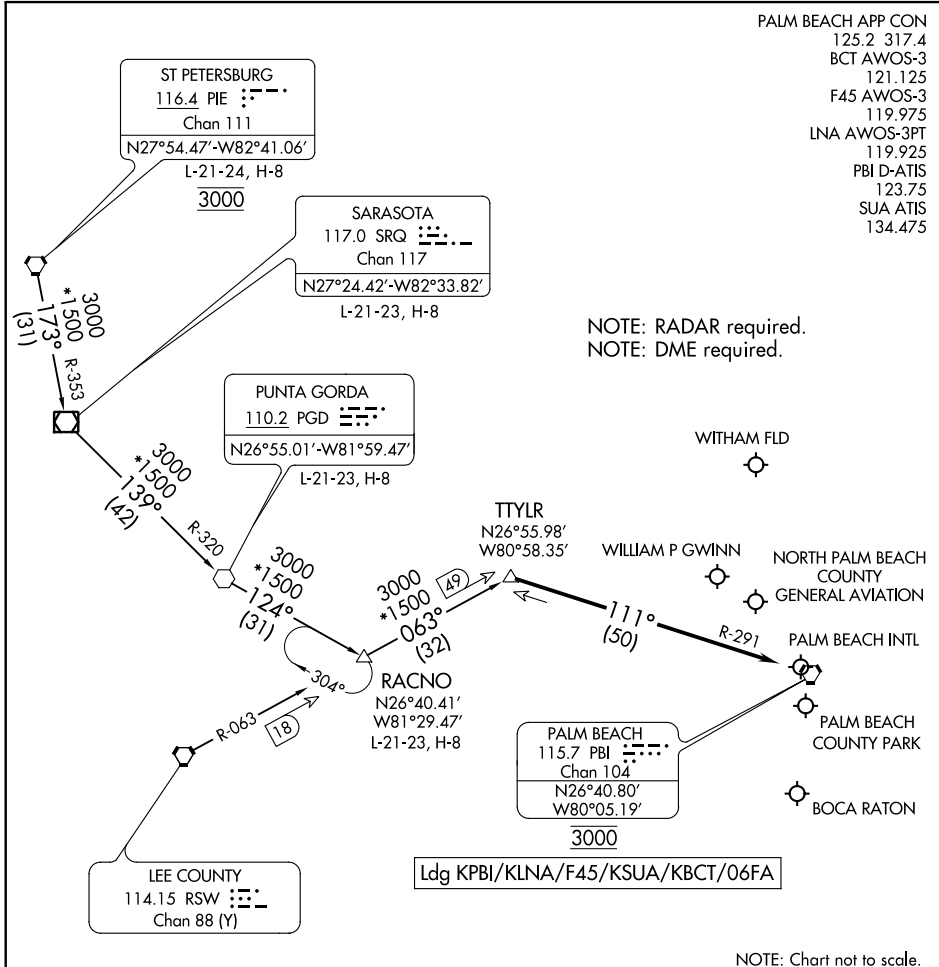


# TTYLR THREE ARRIVAL

WEST PALM BEACH, FLORIDA

- PALM BEACH APP CON 125.2 317.4
- BCT AWOS-3 121.125
- F45 AWOS-3 119.975
- LNA AWOS-3PT 119.925
- PBI D-ATIS 123.75
- SUA ATIS 134.475



NOTE: RADAR required.  
NOTE: DME required.

SE-3, 08 SEP 2022 to 06 OCT 2022

SE-3, 08 SEP 2022 to 06 OCT 2022

## ARRIVAL ROUTE DESCRIPTION

PUNTA GORDA TRANSITION (PGD.TTYLR3): From over PGD VOR on PGD R-124 to RACNO, then on RSW R-063 to TTYLR, thence. . . .

RACNO TRANSITION (RACNO.TTYLR3): From over RACNO on RSW R-063 to TTYLR, thence. . . .

ST PETERSBURG TRANSITION (PIE.TTYLR3): From over PIE VORTAC on PIE R-173 and SRQ R-353 to SRQ VOR/DME, then on SRQ R-139 and PGD R-320 to PGD VOR, then on PGD R-124 to RACNO, then on RSW R-063 to TTYLR, thence. . . .

LANDING ALL AIRPORTS: From TTYLR on PALM BEACH VORTAC (PBI) R-291 to cross PBI VORTAC at 3000. Expect RADAR vectors.

# TTYLR THREE ARRIVAL

WEST PALM BEACH, FLORIDA